

## Product datasheet for **CF505316**

### **RAB30 Mouse Monoclonal Antibody [Clone ID: OTI3B7]**

#### **Product data:**

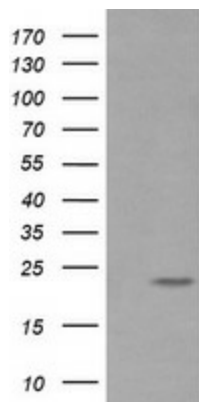
<b>Product Type:</b>	Primary Antibodies
<b>Clone Name:</b>	OTI3B7
<b>Applications:</b>	IF, WB
<b>Recommended Dilution:</b>	WB 1:200~4000, IF 1:100
<b>Reactivity:</b>	Human, Dog, Rat, Mouse
<b>Host:</b>	Mouse
<b>Isotype:</b>	IgG2b
<b>Clonality:</b>	Monoclonal
<b>Immunogen:</b>	Full length human recombinant protein of human RAB30(NP_055303) produced in HEK293T cell.
<b>Formulation:</b>	Lyophilized powder (original buffer 1X PBS, pH 7.3, 8% trehalose)
<b>Reconstitution Method:</b>	For reconstitution, we recommend adding 100uL distilled water to a final antibody concentration of about 1 mg/mL. To use this carrier-free antibody for conjugation experiment, we strongly recommend performing another round of desalting process. (OriGene recommends Zeba Spin Desalting Columns, 7KMWCO from Thermo Scientific)
<b>Purification:</b>	Purified from mouse ascites fluids or tissue culture supernatant by affinity chromatography (protein A/G)
<b>Conjugation:</b>	Unconjugated
<b>Storage:</b>	Store at -20°C as received.
<b>Stability:</b>	Stable for 12 months from date of receipt.
<b>Predicted Protein Size:</b>	22.9 kDa
<b>Gene Name:</b>	RAB30, member RAS oncogene family
<b>Database Link:</b>	<a href="#">NP_055303</a> <a href="#">Entrez Gene 75985 MouseEntrez Gene 308821 RatEntrez Gene 476787 DogEntrez Gene 27314 Human Q15771</a>
<b>Synonyms:</b>	member RAS oncogene family; RAB30



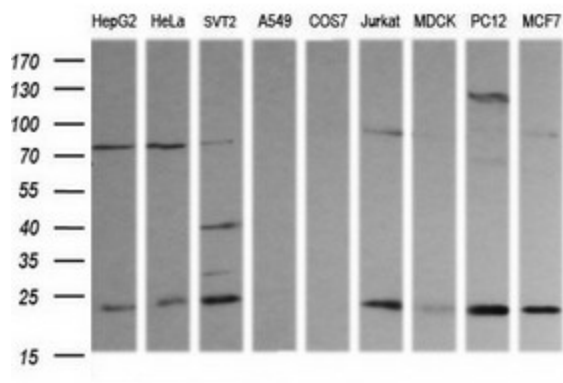
[View online »](#)

Protein Families: Druggable Genome

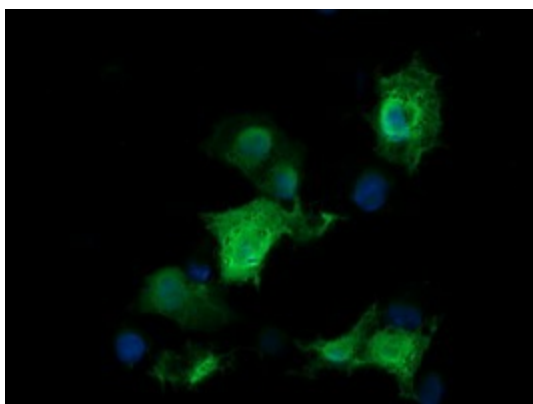
**Product images:**



HEK293T cells were transfected with the pCMV6-ENTRY control (Left lane) or pCMV6-ENTRY RAB30 ([RC204318], Right lane) cDNA for 48 hrs and lysed. Equivalent amounts of cell lysates (5 ug per lane) were separated by SDS-PAGE and immunoblotted with anti-RAB30. Positive lysates [LY415246] (100ug) and [LC415246] (20ug) can be purchased separately from OriGene.



Western blot analysis of extracts (35ug) from 9 different cell lines by using anti-RAB30 monoclonal antibody (HepG2: human; HeLa: human; SVT2: mouse; A549: human; COS7: monkey; Jurkat: human; MDCK: canine; PC12: rat; MCF7: human).



Anti-RAB30 mouse monoclonal antibody ([TA505316]) immunofluorescent staining of COS7 cells transiently transfected by pCMV6-ENTRY RAB30 ([RC204318]).