

Product datasheet for **CF505303**

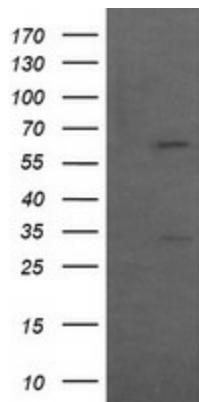
CESK1 (CCT8L2) Mouse Monoclonal Antibody [Clone ID: OTI2F1]

Product data:

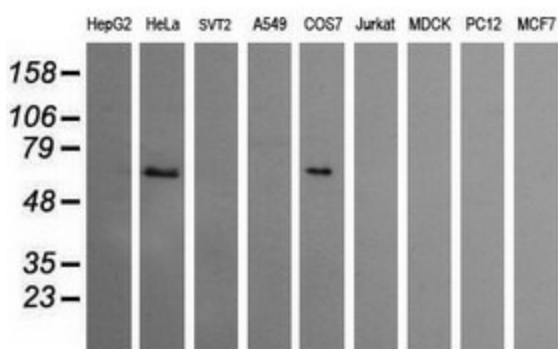
Product Type:	Primary Antibodies
Clone Name:	OTI2F1
Applications:	IF, WB
Recommended Dilution:	WB 1:200~2000, IF 1:100
Reactivity:	Human, Monkey
Host:	Mouse
Isotype:	IgG1
Clonality:	Monoclonal
Immunogen:	Full length human recombinant protein of human CCT8L2(NP_055221) produced in HEK293T cell.
Formulation:	Lyophilized powder (original buffer 1X PBS, pH 7.3, 8% trehalose)
Reconstitution Method:	For reconstitution, we recommend adding 100uL distilled water to a final antibody concentration of about 1 mg/mL. To use this carrier-free antibody for conjugation experiment, we strongly recommend performing another round of desalting process. (OriGene recommends Zeba Spin Desalting Columns, 7KMWCO from Thermo Scientific)
Purification:	Purified from mouse ascites fluids or tissue culture supernatant by affinity chromatography (protein A/G)
Conjugation:	Unconjugated
Storage:	Store at -20°C as received.
Stability:	Stable for 12 months from date of receipt.
Predicted Protein Size:	59.2 kDa
Gene Name:	chaperonin containing TCP1 subunit 8 like 2
Database Link:	NP_055221 Entrez Gene 715847 Monkey Entrez Gene 150160 Human Q96SF2
Synonyms:	CESK1



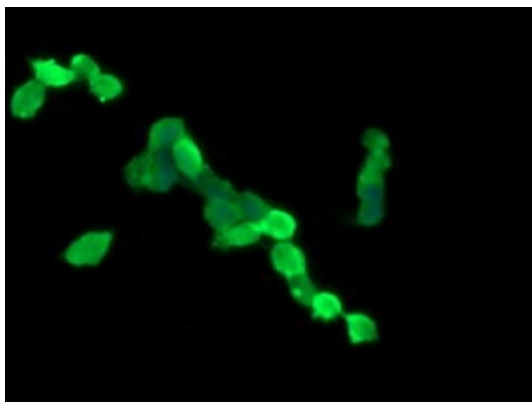
[View online »](#)

Product images:


HEK293T cells were transfected with the pCMV6-ENTRY control (Left lane) or pCMV6-ENTRY CCT8L2 ([RC207536], Right lane) cDNA for 48 hrs and lysed. Equivalent amounts of cell lysates (5 ug per lane) were separated by SDS-PAGE and immunoblotted with anti-CCT8L2. Positive lysates [LY415299] (100ug) and [LC415299] (20ug) can be purchased separately from OriGene.



Western blot analysis of extracts (35ug) from 9 different cell lines by using anti-CCT8L2 monoclonal antibody (HepG2: human; HeLa: human; SVT2: mouse; A549: human; COS7: monkey; Jurkat: human; MDCK: canine; PC12: rat; MCF7: human).



Anti-CCT8L2 mouse monoclonal antibody ([TA505303]) immunofluorescent staining of COS7 cells transiently transfected by pCMV6-ENTRY CCT8L2 ([RC207536]).