

Product datasheet for **CF505267**

SRY Mouse Monoclonal Antibody [Clone ID: OTI3C8]

Product data:

Product Type:	Primary Antibodies
Clone Name:	OTI3C8
Applications:	IF, WB
Recommended Dilution:	WB 1:2000, IF 1:100
Reactivity:	Human
Host:	Mouse
Isotype:	IgG1
Clonality:	Monoclonal
Immunogen:	Full length human recombinant protein of human SRY(NP_003131) produced in E.coli.
Formulation:	Lyophilized powder (original buffer 1X PBS, pH 7.3, 8% trehalose)
Reconstitution Method:	For reconstitution, we recommend adding 100uL distilled water to a final antibody concentration of about 1 mg/mL. To use this carrier-free antibody for conjugation experiment, we strongly recommend performing another round of desalting process. (OriGene recommends Zeba Spin Desalting Columns, 7KMWCO from Thermo Scientific)
Purification:	Purified from mouse ascites fluids or tissue culture supernatant by affinity chromatography (protein A/G)
Conjugation:	Unconjugated
Storage:	Store at -20°C as received.
Stability:	Stable for 12 months from date of receipt.
Predicted Protein Size:	23.7 kDa
Gene Name:	sex determining region Y
Database Link:	NP_003131 Entrez Gene 6736 Human Q05066



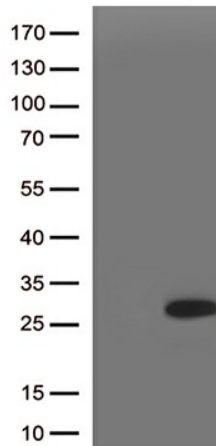
[View online »](#)

Background:

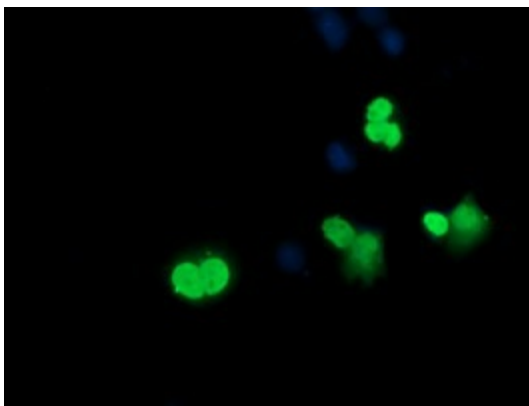
This intronless gene encodes a transcription factor that is a member of the high mobility group (HMG)-box family of DNA-binding proteins. This protein is the testis-determining factor (TDF), which initiates male sex determination. Mutations in this gene give rise to XY females with gonadal dysgenesis (Swyer syndrome); translocation of part of the Y chromosome containing this gene to the X chromosome causes XX male syndrome. [provided by RefSeq, Jul 2008]

Synonyms:

SRXX1; SRXY1; TDF; TDY

Product images:


HEK293T cells were transfected with the pCMV6-ENTRY control (Cat# [PS100001], Left lane) or pCMV6-ENTRY SRY (Cat# [RC210382], Right lane) cDNA for 48 hrs and lysed. Equivalent amounts of cell lysates (5 ug per lane) were separated by SDS-PAGE and immunoblotted with anti-SRY (Cat# [TA505267]). Positive lysates [LY418872] (100ug) and [LC418872] (20ug) can be purchased separately from OriGene.



Anti-SRY mouse monoclonal antibody ([TA505267]) immunofluorescent staining of COS7 cells transiently transfected by pCMV6-ENTRY SRY ([RC210382]).