

## Product datasheet for **CF505265**

### FATE1 Mouse Monoclonal Antibody [Clone ID: OTI6G10]

#### Product data:

Product Type:	Primary Antibodies
Clone Name:	OTI6G10
Applications:	WB
Recommended Dilution:	WB 1:2000
Reactivity:	Human
Host:	Mouse
Isotype:	IgG1
Clonality:	Monoclonal
Immunogen:	Full length human recombinant protein of human FATE1(NP_055814) produced in HEK293T cell.
Formulation:	Lyophilized powder (original buffer 1X PBS, pH 7.3, 8% trehalose)
Reconstitution Method:	For reconstitution, we recommend adding 100uL distilled water to a final antibody concentration of about 1 mg/mL. To use this carrier-free antibody for conjugation experiment, we strongly recommend performing another round of desalting process. (OriGene recommends Zeba Spin Desalting Columns, 7KMWCO from Thermo Scientific)
Purification:	Purified from mouse ascites fluids or tissue culture supernatant by affinity chromatography (protein A/G)
Conjugation:	Unconjugated
Storage:	Store at -20°C as received.
Stability:	Stable for 12 months from date of receipt.
Predicted Protein Size:	20.5 kDa
Gene Name:	fetal and adult testis expressed 1
Database Link:	<a href="#">NP_149076</a> <a href="#">Entrez Gene 89885 Human</a> <a href="#">Q969F0</a>
Background:	RAB21 belongs to the RAB family of small GTP-binding proteins that regulate intracellular vesicle targeting (Opdam et al., 2000 [PubMed 10887961]). [supplied by OMIM, Nov 2008]

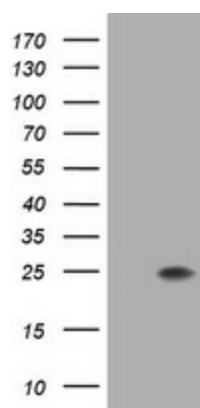


[View online »](#)

Synonyms: CT43; FATE

Protein Families: Transmembrane

### Product images:



HEK293T cells were transfected with the pCMV6-ENTRY control (Left lane) or pCMV6-ENTRY FATE1 ([RC205951], Right lane) cDNA for 48 hrs and lysed. Equivalent amounts of cell lysates (5 ug per lane) were separated by SDS-PAGE and immunoblotted with anti-FATE1. Positive lysates [LY409735] (100ug) and [LC409735] (20ug) can be purchased separately from OriGene.