

Product datasheet for **CF505237**

Host cell factor C2 (HCFC2) Mouse Monoclonal Antibody [Clone ID: OTI4E11]

Product data:

Product Type:	Primary Antibodies
Clone Name:	OTI4E11
Applications:	IF, WB
Recommended Dilution:	WB 1:200~2000, IF 1:100
Reactivity:	Human, Mouse, Rat
Host:	Mouse
Isotype:	IgG2a
Clonality:	Monoclonal
Immunogen:	Full length human recombinant protein of human HCFC2(NP_037452) produced in HEK293T cell.
Formulation:	Lyophilized powder (original buffer 1X PBS, pH 7.3, 8% trehalose)
Reconstitution Method:	For reconstitution, we recommend adding 100uL distilled water to a final antibody concentration of about 1 mg/mL. To use this carrier-free antibody for conjugation experiment, we strongly recommend performing another round of desalting process. (OriGene recommends Zeba Spin Desalting Columns, 7KMWCO from Thermo Scientific)
Purification:	Purified from mouse ascites fluids or tissue culture supernatant by affinity chromatography (protein A/G)
Conjugation:	Unconjugated
Storage:	Store at -20°C as received.
Stability:	Stable for 12 months from date of receipt.
Predicted Protein Size:	86.6 kDa
Gene Name:	host cell factor C2
Database Link:	NP_037452 Entrez Gene 67933 Mouse Entrez Gene 314704 Rat Entrez Gene 29915 Human Q9Y5Z7



[View online »](#)

Background:

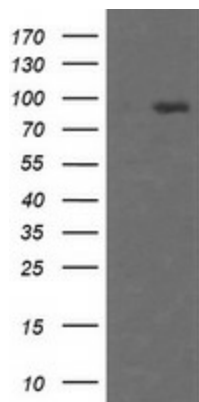
This gene encodes one of two proteins which interact with VP16, a herpes simplex virus protein that initiates virus infection. Both the encoded protein and the original Herpes host cell factor interact with VP16 through a beta-propeller domain. The original Herpes host cell factor, however, is effective at initiating viral infection while the encoded protein is not. Transcripts of varying length due to alternative polyadenylation signals have been described. [provided by RefSeq, Jul 2008]

Synonyms:

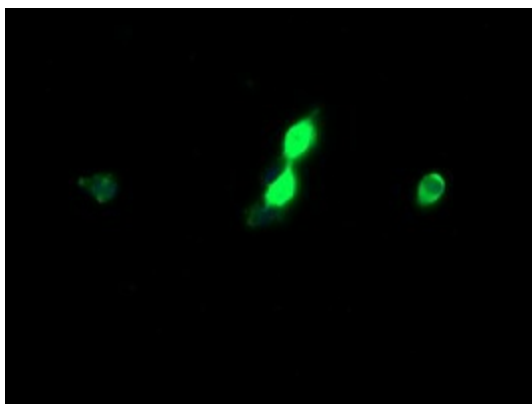
HCF-2; HCF2

Protein Families:

Transcription Factors

Product images:

HEK293T cells were transfected with the pCMV6-ENTRY control (Left lane) or pCMV6-ENTRY HCFC2 ([RC207543], Right lane) cDNA for 48 hrs and lysed. Equivalent amounts of cell lysates (5 ug per lane) were separated by SDS-PAGE and immunoblotted with anti-HCFC2. Positive lysates [LY415672] (100ug) and [LC415672] (20ug) can be purchased separately from OriGene.



Anti-HCFC2 mouse monoclonal antibody ([TA505237]) immunofluorescent staining of COS7 cells transiently transfected by pCMV6-ENTRY HCFC2 ([RC207543]).