

Product datasheet for **CF505198**

OTUB1 Mouse Monoclonal Antibody [Clone ID: OTI5F6]

Product data:

Product Type:	Primary Antibodies
Clone Name:	OTI5F6
Applications:	FC, IF, WB
Recommended Dilution:	WB 1:2000, IF 1:100, FLOW 1:100
Reactivity:	Human, Rat
Host:	Mouse
Isotype:	IgG1
Clonality:	Monoclonal
Immunogen:	Full length human recombinant rotein of human OTUB1(NP_060140) produced in HEK293T cell.
Formulation:	Lyophilized powder (original buffer 1X PBS, pH 7.3, 8% trehalose)
Reconstitution Method:	For reconstitution, we recommend adding 100uL distilled water to a final antibody concentration of about 1 mg/mL. To use this carrier-free antibody for conjugation experiment, we strongly recommend performing another round of desalting process. (OriGene recommends Zeba Spin Desalting Columns, 7KMWCO from Thermo Scientific)
Purification:	Purified from mouse ascites fluids or tissue culture supernatant by affinity chromatography (protein A/G)
Conjugation:	Unconjugated
Storage:	Store at -20°C as received.
Stability:	Stable for 12 months from date of receipt.
Predicted Protein Size:	31.1 kDa
Gene Name:	OTU deubiquitinase, ubiquitin aldehyde binding 1
Database Link:	NP_060140 Entrez Gene 293705 Rat Entrez Gene 55611 Human Q96FW1



[View online »](#)

Background:

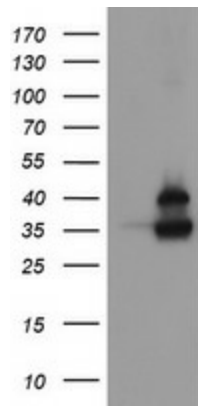
The product of this gene is a member of the OTU (ovarian tumor) superfamily of predicted cysteine proteases. The encoded protein is a highly specific ubiquitin iso-peptidase, and cleaves ubiquitin from branched poly-ubiquitin chains but not from ubiquitinated substrates. It interacts with another ubiquitin protease and an E3 ubiquitin ligase that inhibits cytokine gene transcription in the immune system. It is proposed to function in specific ubiquitin-dependent pathways, possibly by providing an editing function for polyubiquitin chain growth. Alternative splicing results in multiple transcript variants. [provided by RefSeq]

Synonyms:

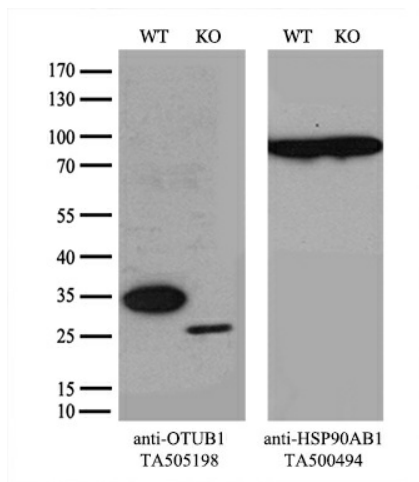
HSPC263; OTB1; OTU1

Protein Families:

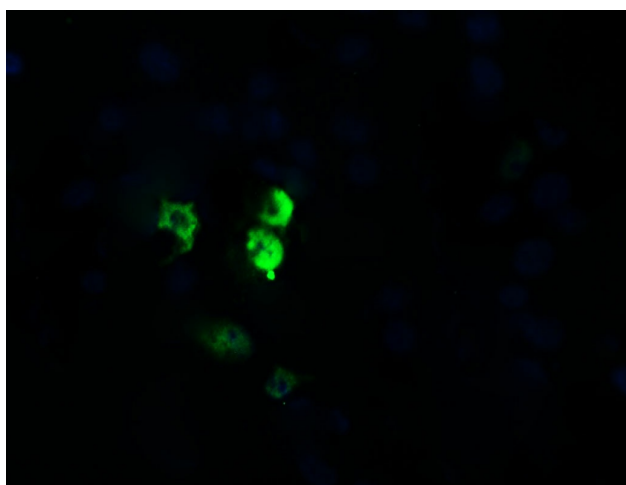
Protease

Product images:


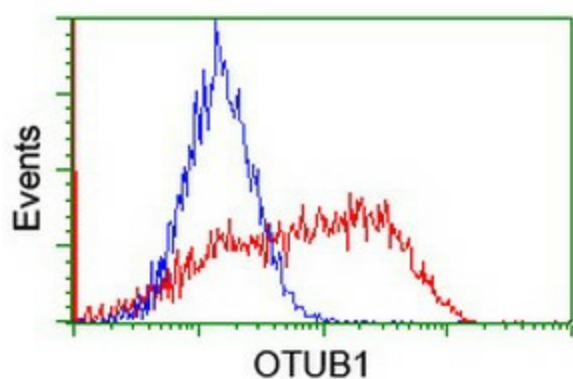
HEK293T cells were transfected with the pCMV6-ENTRY control (Left lane) or pCMV6-ENTRY OTUB1 ([RC210648], Right lane) cDNA for 48 hrs and lysed. Equivalent amounts of cell lysates (5 ug per lane) were separated by SDS-PAGE and immunoblotted with anti-OTUB1. Positive lysates [LY402607] (100ug) and [LC402607] (20ug) can be purchased separately from OriGene.



Equivalent amounts of cell lysates (10 ug per lane) of wild-type 293T cells (WT, Cat# LC810293T) and OTUB1-Knockout 293T cells (KO, Cat# [LC810883]) were separated by SDS-PAGE and immunoblotted with anti-OTUB1 monoclonal antibody [TA505198], (1:500). Then the blotted membrane was stripped and reprobed with anti-HSP90AB1 antibody ([TA500494]) as a loading control.



Anti-OTUB1 mouse monoclonal antibody ([TA505198]) immunofluorescent staining of COS7 cells transiently transfected by pCMV6-ENTRY OTUB1 ([RC210648]).



HEK293T cells transfected with either [RC210648] overexpress plasmid (Red) or empty vector control plasmid (Blue) were immunostained by anti-OTUB1 antibody ([TA505198]), and then analyzed by flow cytometry.