

## Product datasheet for **CF505180**

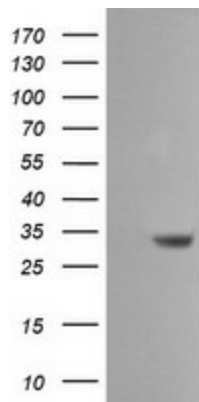
### SDSL Mouse Monoclonal Antibody [Clone ID: OTI1G4]

#### Product data:

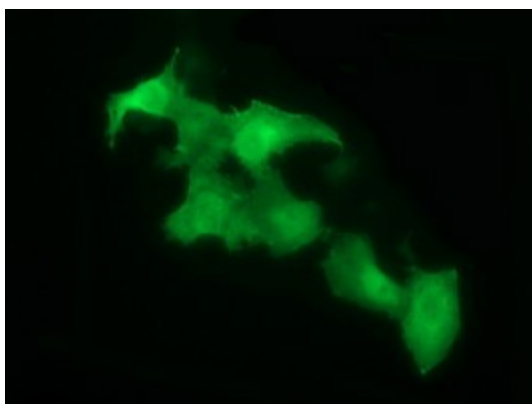
Product Type:	Primary Antibodies
Clone Name:	OTI1G4
Applications:	IF, WB
Recommended Dilution:	WB 1:4000, IF 1:100
Reactivity:	Human
Host:	Mouse
Isotype:	IgG1
Clonality:	Monoclonal
Immunogen:	Full length human recombinant protein of human SDSL(NP_612441) produced in HEK293T cell.
Formulation:	Lyophilized powder (original buffer 1X PBS, pH 7.3, 8% trehalose)
Reconstitution Method:	For reconstitution, we recommend adding 100uL distilled water to a final antibody concentration of about 1 mg/mL. To use this carrier-free antibody for conjugation experiment, we strongly recommend performing another round of desalting process. (OriGene recommends Zeba Spin Desalting Columns, 7KMWCO from Thermo Scientific)
Purification:	Purified from mouse ascites fluids or tissue culture supernatant by affinity chromatography (protein A/G)
Conjugation:	Unconjugated
Storage:	Store at -20°C as received.
Stability:	Stable for 12 months from date of receipt.
Gene Name:	serine dehydratase like
Database Link:	<a href="#">NP_612441</a> <a href="#">Entrez Gene 113675 Human</a> <a href="#">Q96GA7</a>
Synonyms:	cSDH; SDH 2; SDS-RS1; TDH



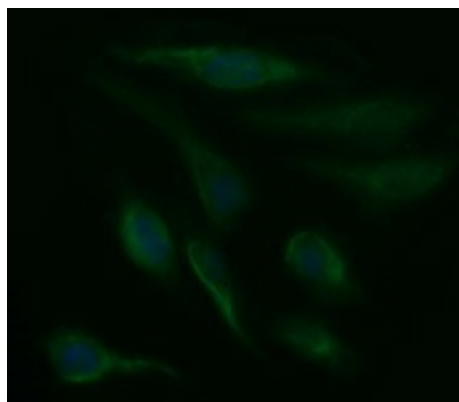
[View online »](#)

**Product images:**

HEK293T cells were transfected with the pCMV6-ENTRY control (Left lane) or pCMV6-ENTRY SDSL ([RC203515], Right lane) cDNA for 48 hrs and lysed. Equivalent amounts of cell lysates (5 ug per lane) were separated by SDS-PAGE and immunoblotted with anti-SDSL. Positive lysates [LY408687] (100ug) and [LC408687] (20ug) can be purchased separately from OriGene.



Anti-SDSL mouse monoclonal antibody ([TA505180]) immunofluorescent staining of COS7 cells transiently transfected by pCMV6-ENTRY SDSL ([RC203515]).



Immunofluorescent staining of HeLa cells using anti-SDSL mouse monoclonal antibody ([TA505180]).