

Product datasheet for **CF505176**

STK38L Mouse Monoclonal Antibody [Clone ID: OTI4D8]

Product data:

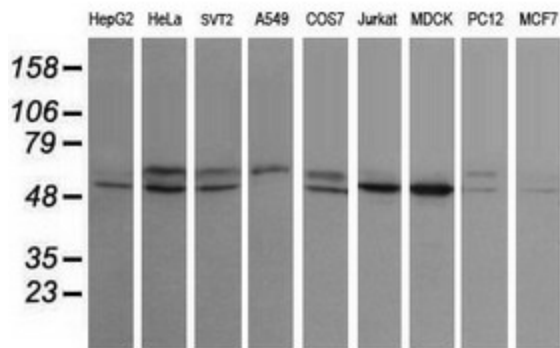
Product Type:	Primary Antibodies
Clone Name:	OTI4D8
Applications:	IF, IHC, WB
Recommended Dilution:	WB 1:200~2000, IHC 1:150, IF 1:100
Reactivity:	Human, Dog, Rat, Monkey, Mouse
Host:	Mouse
Isotype:	IgG1
Clonality:	Monoclonal
Immunogen:	Human recombinant protein fragment corresponding to amino acids 1-281 of human STK38L(NP_055815) produced in E.coli.
Formulation:	Lyophilized powder (original buffer 1X PBS, pH 7.3, 8% trehalose)
Reconstitution Method:	For reconstitution, we recommend adding 100uL distilled water to a final antibody concentration of about 1 mg/mL. To use this carrier-free antibody for conjugation experiment, we strongly recommend performing another round of desalting process. (OriGene recommends Zeba Spin Desalting Columns, 7KMWCO from Thermo Scientific)
Purification:	Purified from mouse ascites fluids or tissue culture supernatant by affinity chromatography (protein A/G)
Conjugation:	Unconjugated
Storage:	Store at -20°C as received.
Stability:	Stable for 12 months from date of receipt.
Predicted Protein Size:	53.8 kDa
Gene Name:	serine/threonine kinase 38 like
Database Link:	NP_055815 Entrez Gene 232533 MouseEntrez Gene 691337 RatEntrez Gene 477663 DogEntrez Gene 711047 MonkeyEntrez Gene 23012 Human Q9Y2H1
Synonyms:	NDR2



[View online »](#)

Protein Families: Druggable Genome, Protein Kinase

Product images:



Western blot analysis of extracts (35ug) from 9 different cell lines by using anti-STK38L monoclonal antibody (HepG2: human; HeLa: human; SVT2: mouse; A549: human; COS7: monkey; Jurkat: human; MDCK: canine; PC12: rat; MCF7: human).

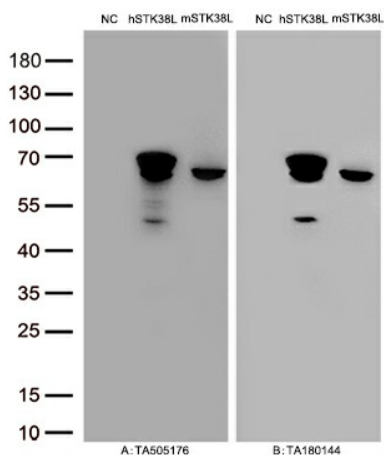
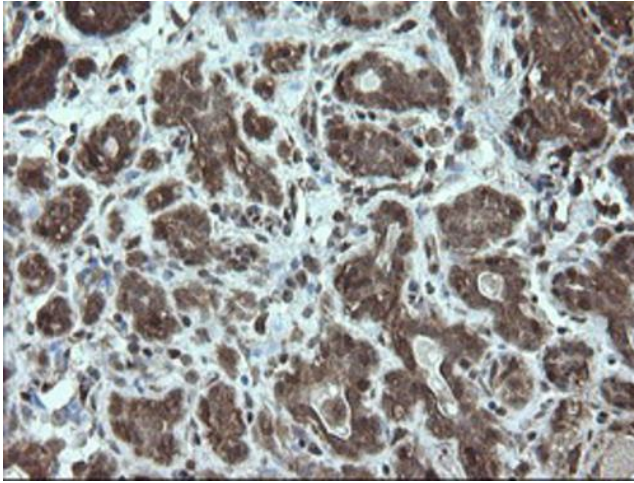
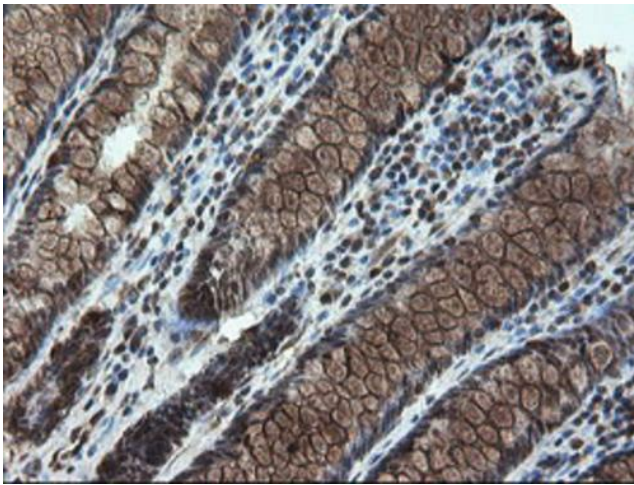


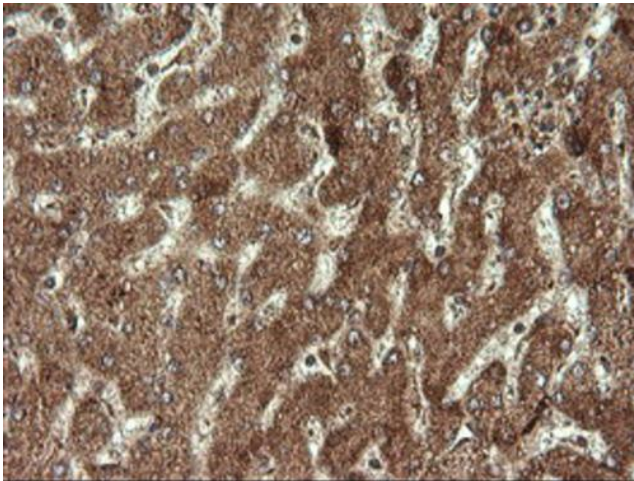
Figure A, Western blot analysis of overexpressed lysates (15ug per lane) from HEK293T cells transfected with empty plasmid ([PS100001], NC), human STK38L plasmid ([RC206074], hSTK38L), mouse STK38L plasmid ([MR207529], mSTK38L) using anti-STK38L antibody [TA505176] (1:500). Figure B, Western blot analysis of the same samples as figure A with anti-DDK antibody [TA180144], 1:1000



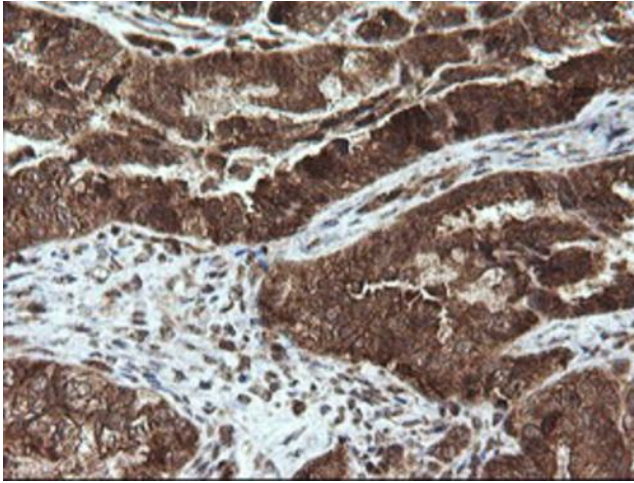
Immunohistochemical staining of paraffin-embedded Human breast tissue within the normal limits using anti-STK38L mouse monoclonal antibody. Heat-induced epitope retrieval by EDTA solution buffer pH 8.0 at 120°C for 3 min.



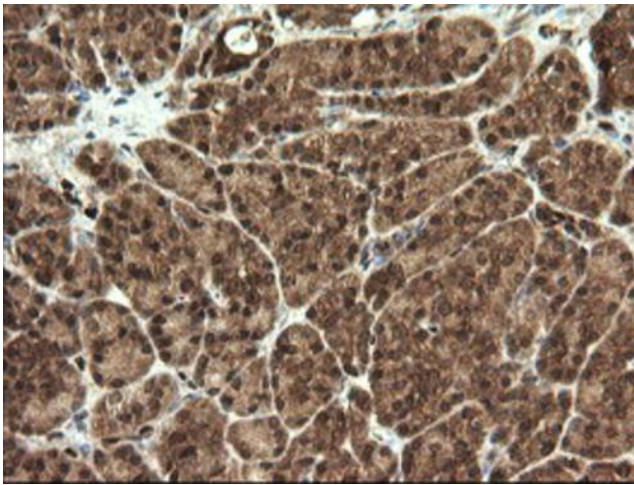
Immunohistochemical staining of paraffin-embedded Human colon tissue within the normal limits using anti-STK38L mouse monoclonal antibody. Heat-induced epitope retrieval by EDTA solution buffer pH 8.0 at 120°C for 3 min.



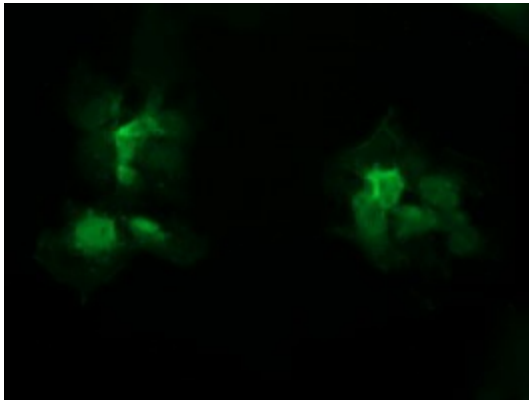
Immunohistochemical staining of paraffin-embedded Human liver tissue within the normal limits using anti-STK38L mouse monoclonal antibody. Heat-induced epitope retrieval by EDTA solution buffer pH 8.0 at 120°C for 3 min.



Immunohistochemical staining of paraffin-embedded Adenocarcinoma of Human ovary tissue using anti-STK38L mouse monoclonal antibody. Heat-induced epitope retrieval by EDTA solution buffer pH 8.0 at 120°C for 3 min.



Immunohistochemical staining of paraffin-embedded Human pancreas tissue within the normal limits using anti-STK38L mouse monoclonal antibody. Heat-induced epitope retrieval by EDTA solution buffer pH 8.0 at 120°C for 3 min.



Anti-STK38L mouse monoclonal antibody ([TA505176]) immunofluorescent staining of COS7 cells transiently transfected by pCMV6-ENTRY STK38L ([RC206074]).