

## Product datasheet for **CF505149**

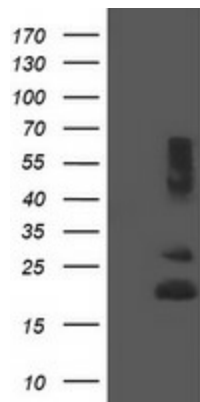
### REEP5 Mouse Monoclonal Antibody [Clone ID: OTI4D2]

#### Product data:

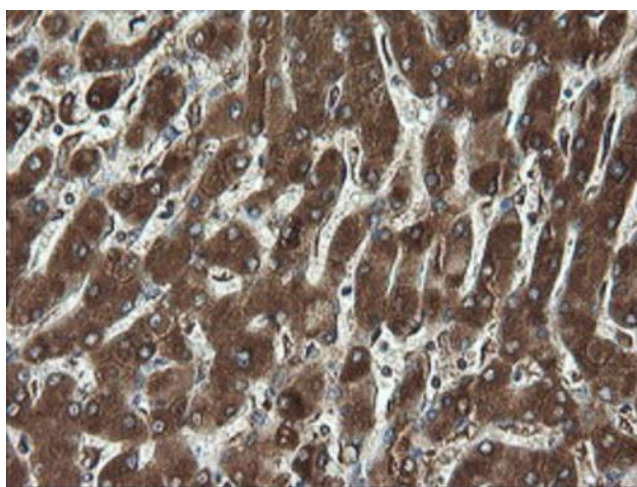
Product Type:	Primary Antibodies
Clone Name:	OTI4D2
Applications:	FC, IHC, WB
Recommended Dilution:	WB 1:2000, IHC 1:150, FLOW 1:100
Reactivity:	Human, Mouse, Rat
Host:	Mouse
Isotype:	IgG2a
Clonality:	Monoclonal
Immunogen:	Full length human recombinant protein of human REEP5(NP_005660) produced in HEK293T cell.
Formulation:	Lyophilized powder (original buffer 1X PBS, pH 7.3, 8% trehalose)
Reconstitution Method:	For reconstitution, we recommend adding 100uL distilled water to a final antibody concentration of about 1 mg/mL. To use this carrier-free antibody for conjugation experiment, we strongly recommend performing another round of desalting process. (OriGene recommends Zeba Spin Desalting Columns, 7KMWCO from Thermo Scientific)
Purification:	Purified from mouse ascites fluids or tissue culture supernatant by affinity chromatography (protein A/G)
Conjugation:	Unconjugated
Storage:	Store at -20°C as received.
Stability:	Stable for 12 months from date of receipt.
Predicted Protein Size:	21.3 kDa
Gene Name:	receptor accessory protein 5
Database Link:	<a href="#">NP_005660</a> <a href="#">Entrez Gene 7905 Human</a> <a href="#">Q00765</a>
Synonyms:	C5orf18; D5S346; DP1; TB2; Yip2e; YOP1
Protein Families:	Druggable Genome, Transmembrane



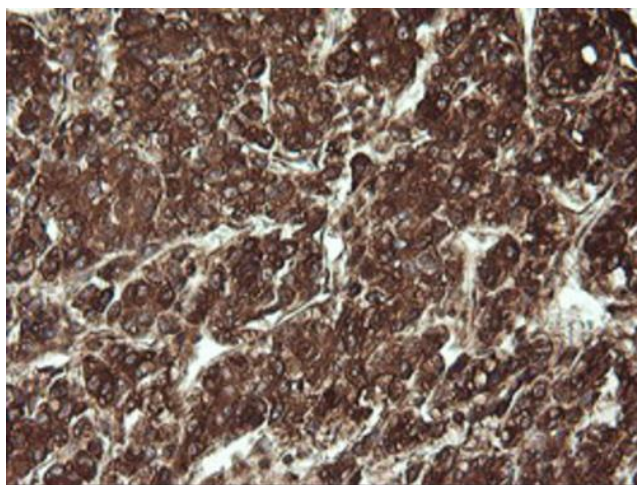
[View online »](#)

**Product images:**

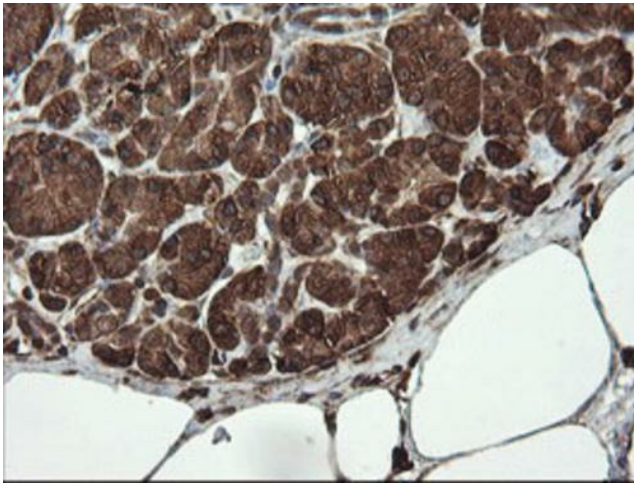
HEK293T cells were transfected with the pCMV6-ENTRY control (Cat# [PS100001], Left lane) or pCMV6-ENTRY REEP5 (Cat# [RC222224], Right lane) cDNA for 48 hrs and lysed. Equivalent amounts of cell lysates (5 ug per lane) were separated by SDS-PAGE and immunoblotted with anti-REEP5 (Cat# [TA505149]). Positive lysates [LY401730] (100ug) and [LC401730] (20ug) can be purchased separately from OriGene.



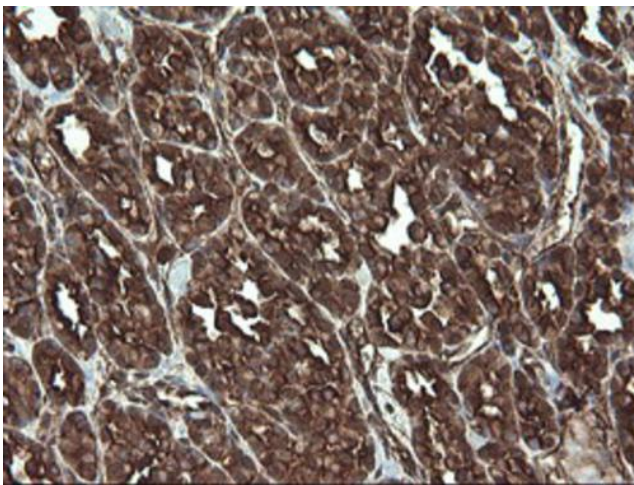
Immunohistochemical staining of paraffin-embedded Human liver tissue within the normal limits using anti-REEP5 mouse monoclonal antibody. (Heat-induced epitope retrieval by 10mM citric buffer, pH6.0, 120°C for 3min, [TA505149])



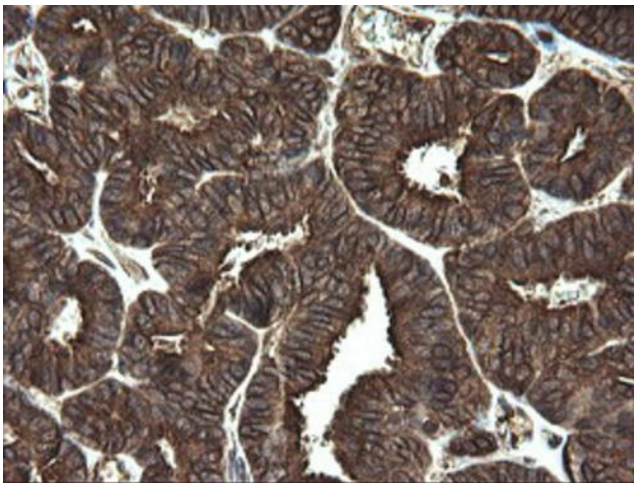
Immunohistochemical staining of paraffin-embedded Carcinoma of Human liver tissue using anti-REEP5 mouse monoclonal antibody. (Heat-induced epitope retrieval by 10mM citric buffer, pH6.0, 120°C for 3min, [TA505149])



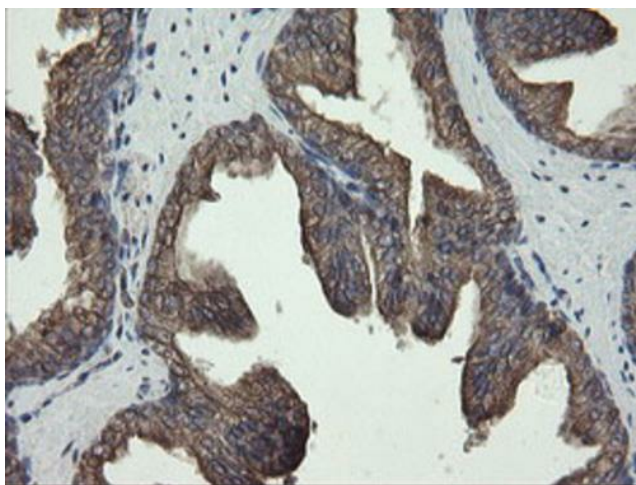
Immunohistochemical staining of paraffin-embedded Human pancreas tissue within the normal limits using anti-REEP5 mouse monoclonal antibody. (Heat-induced epitope retrieval by 10mM citric buffer, pH6.0, 120°C for 3min, [TA505149])



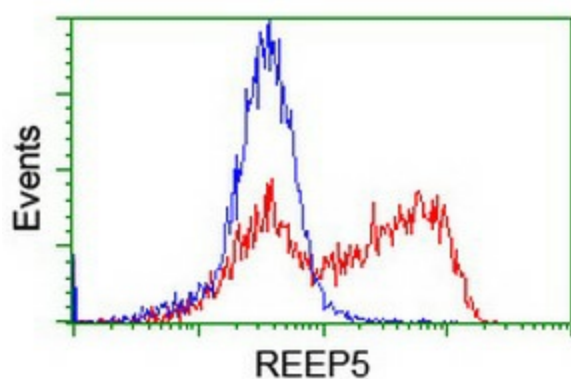
Immunohistochemical staining of paraffin-embedded Carcinoma of Human thyroid tissue using anti-REEP5 mouse monoclonal antibody. (Heat-induced epitope retrieval by 10mM citric buffer, pH6.0, 120°C for 3min, [TA505149])



Immunohistochemical staining of paraffin-embedded Adenocarcinoma of Human endometrium tissue using anti-REEP5 mouse monoclonal antibody. (Heat-induced epitope retrieval by 10mM citric buffer, pH6.0, 120°C for 3min, [TA505149])



Immunohistochemical staining of paraffin-embedded Human prostate tissue within the normal limits using anti-REEP5 mouse monoclonal antibody. (Heat-induced epitope retrieval by 10mM citric buffer, pH6.0, 120°C for 3min, [TA505149])



HEK293T cells transfected with either [RC222224] overexpress plasmid (Red) or empty vector control plasmid (Blue) were immunostained by anti-REEP5 antibody ([TA505149]), and then analyzed by flow cytometry.