

## Product datasheet for **CF505106**

### **RPC62 (POLR3C) Mouse Monoclonal Antibody [Clone ID: OTI2H1]**

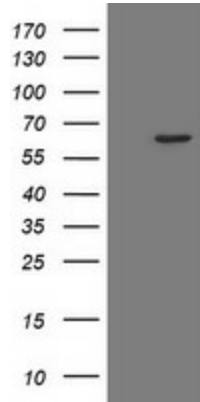
#### **Product data:**

<b>Product Type:</b>	Primary Antibodies
<b>Clone Name:</b>	OTI2H1
<b>Applications:</b>	IF, IHC, WB
<b>Recommended Dilution:</b>	WB 1:2000, IHC 1:150, IF 1:100
<b>Reactivity:</b>	Human, Mouse, Rat
<b>Host:</b>	Mouse
<b>Isotype:</b>	IgG1
<b>Clonality:</b>	Monoclonal
<b>Immunogen:</b>	Full length human recombinant protein of human POLR3C(NP_006459) produced in HEK293T cell.
<b>Formulation:</b>	Lyophilized powder (original buffer 1X PBS, pH 7.3, 8% trehalose)
<b>Reconstitution Method:</b>	For reconstitution, we recommend adding 100uL distilled water to a final antibody concentration of about 1 mg/mL. To use this carrier-free antibody for conjugation experiment, we strongly recommend performing another round of desalting process. (OriGene recommends Zeba Spin Desalting Columns, 7KMWCO from Thermo Scientific)
<b>Purification:</b>	Purified from mouse ascites fluids or tissue culture supernatant by affinity chromatography (protein A/G)
<b>Storage:</b>	Store at -20°C as received.
<b>Stability:</b>	Stable for 12 months from date of receipt.
<b>Predicted Protein Size:</b>	60.4 kDa
<b>Gene Name:</b>	Homo sapiens RNA polymerase III subunit C (POLR3C), transcript variant 1, mRNA.
<b>Database Link:</b>	<a href="#">NP_006459 Entrez Gene 74414 Mouse</a> <a href="#">Entrez Gene 310685 Rat</a> <a href="#">Entrez Gene 10623 Human</a>
<b>Synonyms:</b>	RPC3; RPC62
<b>Protein Families:</b>	Transcription Factors
<b>Protein Pathways:</b>	Cytosolic DNA-sensing pathway, Metabolic pathways, Purine metabolism, Pyrimidine metabolism, RNA polymerase

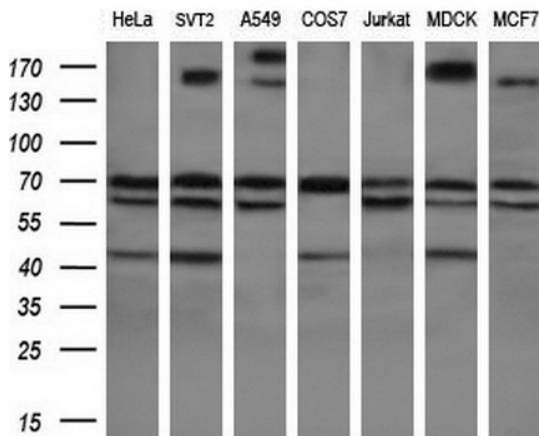


[View online »](#)

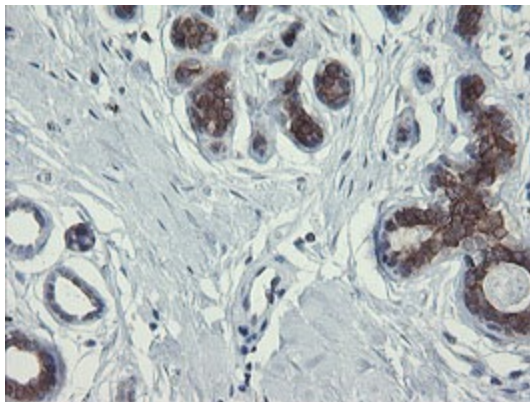
Product images:



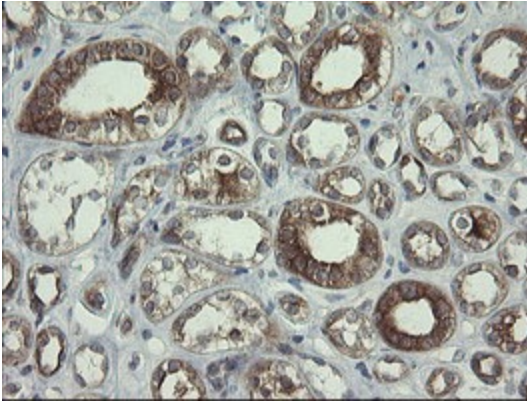
HEK293T cells were transfected with the pCMV6-ENTRY control (Left lane) or pCMV6-ENTRY POLR3C ([RC200279], Right lane) cDNA for 48 hrs and lysed. Equivalent amounts of cell lysates (5 ug per lane) were separated by SDS-PAGE and immunoblotted with anti-POLR3C. Positive lysates [LY401943] (100ug) and [LC401943] (20ug) can be purchased separately from OriGene.



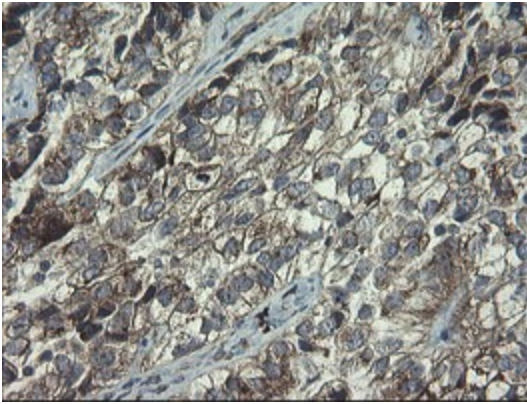
Western blot analysis of extracts (10ug) from 7 different cell lines by using anti-POLR3C monoclonal antibody (1:200).



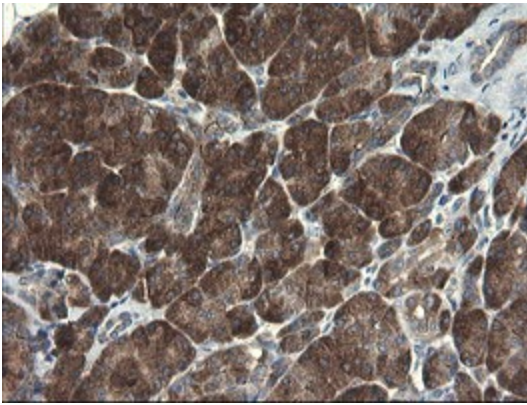
Immunohistochemical staining of paraffin-embedded Human breast tissue within the normal limits using anti-POLR3C mouse monoclonal antibody. (Heat-induced epitope retrieval by 10mM citric buffer, pH6.0, 100°C for 10min, [TA505106])



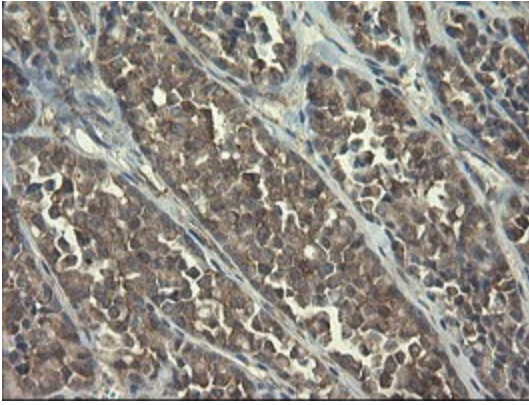
Immunohistochemical staining of paraffin-embedded Human Kidney tissue within the normal limits using anti-POLR3C mouse monoclonal antibody. (Heat-induced epitope retrieval by 10mM citric buffer, pH6.0, 100°C for 10min, [TA505106])



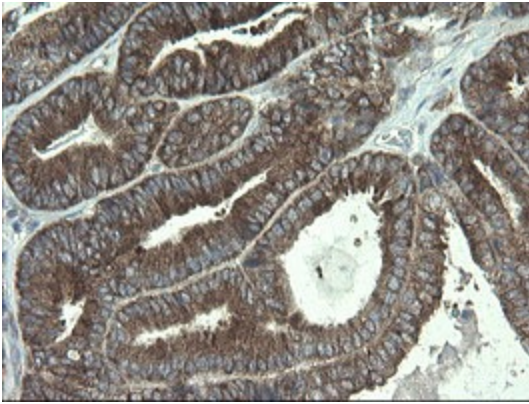
Immunohistochemical staining of paraffin-embedded Adenocarcinoma of Human ovary tissue using anti-POLR3C mouse monoclonal antibody. (Heat-induced epitope retrieval by 10mM citric buffer, pH6.0, 100°C for 10min, [TA505106])



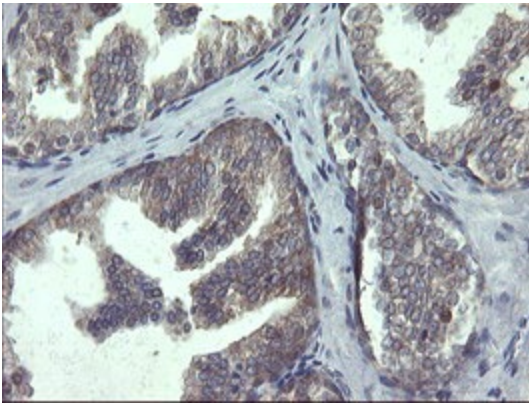
Immunohistochemical staining of paraffin-embedded Human pancreas tissue within the normal limits using anti-POLR3C mouse monoclonal antibody. (Heat-induced epitope retrieval by 10mM citric buffer, pH6.0, 100°C for 10min, [TA505106])



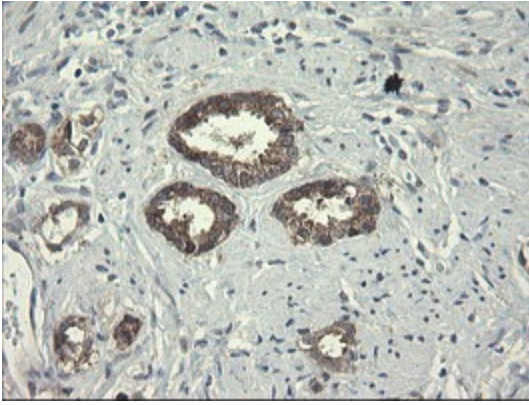
Immunohistochemical staining of paraffin-embedded Carcinoma of Human thyroid tissue using anti-POLR3C mouse monoclonal antibody. (Heat-induced epitope retrieval by 10mM citric buffer, pH6.0, 100°C for 10min, [TA505106])



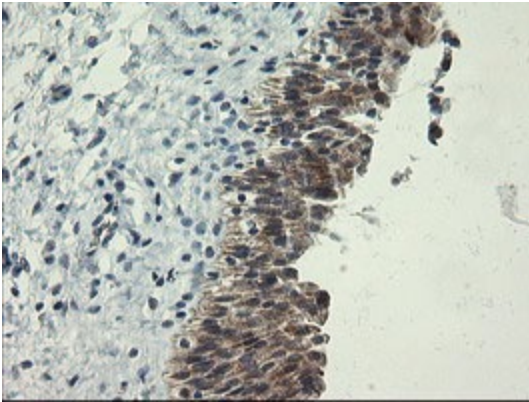
Immunohistochemical staining of paraffin-embedded Adenocarcinoma of Human endometrium tissue using anti-POLR3C mouse monoclonal antibody. (Heat-induced epitope retrieval by 10mM citric buffer, pH6.0, 100°C for 10min, [TA505106])



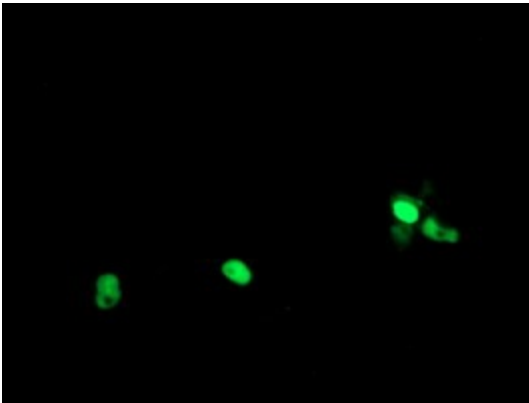
Immunohistochemical staining of paraffin-embedded Human prostate tissue within the normal limits using anti-POLR3C mouse monoclonal antibody. (Heat-induced epitope retrieval by 10mM citric buffer, pH6.0, 100°C for 10min, [TA505106])



Immunohistochemical staining of paraffin-embedded Carcinoma of Human prostate tissue using anti-POLR3C mouse monoclonal antibody. (Heat-induced epitope retrieval by 10mM citric buffer, pH6.0, 100°C for 10min, [TA505106])



Immunohistochemical staining of paraffin-embedded Human bladder tissue within the normal limits using anti-POLR3C mouse monoclonal antibody. (Heat-induced epitope retrieval by 10mM citric buffer, pH6.0, 100°C for 10min, [TA505106])



Anti-POLR3C mouse monoclonal antibody ([TA505106]) immunofluorescent staining of COS7 cells transiently transfected by pCMV6-ENTRY POLR3C ([RC200279]).