

Product datasheet for **CF505100**

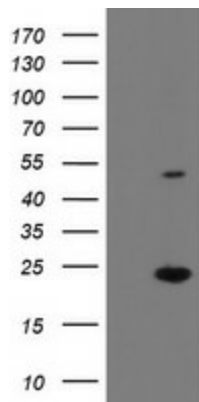
EIF5A2 Mouse Monoclonal Antibody [Clone ID: OTI6G7]

Product data:

Product Type:	Primary Antibodies
Clone Name:	OTI6G7
Applications:	FC, IF, IHC, WB
Recommended Dilution:	WB 1:2000, IHC 1:150, IF 1:100, FLOW 1:100
Reactivity:	Human, Mouse, Rat
Host:	Mouse
Isotype:	IgG1
Clonality:	Monoclonal
Immunogen:	Full length human recombinant protein of human EIF5A2(NP_065123) produced in HEK293T cell.
Formulation:	Lyophilized powder (original buffer 1X PBS, pH 7.3, 8% trehalose)
Reconstitution Method:	For reconstitution, we recommend adding 100uL distilled water to a final antibody concentration of about 1 mg/mL. To use this carrier-free antibody for conjugation experiment, we strongly recommend performing another round of desalting process. (OriGene recommends Zeba Spin Desalting Columns, 7KMWCO from Thermo Scientific)
Purification:	Purified from mouse ascites fluids or tissue culture supernatant by affinity chromatography (protein A/G)
Conjugation:	Unconjugated
Storage:	Store at -20°C as received.
Stability:	Stable for 12 months from date of receipt.
Predicted Protein Size:	16.6 kDa
Gene Name:	eukaryotic translation initiation factor 5A2
Database Link:	NP_065123 Entrez Gene 208691 MouseEntrez Gene 310261 RatEntrez Gene 56648 Human Q9GZV4
Synonyms:	EIF-5A2; eIF5AII



[View online »](#)

Product images:


HEK293T cells were transfected with the pCMV6-ENTRY control (Cat# [PS100001], Left lane) or pCMV6-ENTRY EIF5A2 (Cat# [RC206249], Right lane) cDNA for 48 hrs and lysed. Equivalent amounts of cell lysates (5 ug per lane) were separated by SDS-PAGE and immunoblotted with anti-EIF5A2(Cat# [TA505100]). Positive lysates [LY412495] (100ug) and [LC412495] (20ug) can be purchased separately from OriGene.

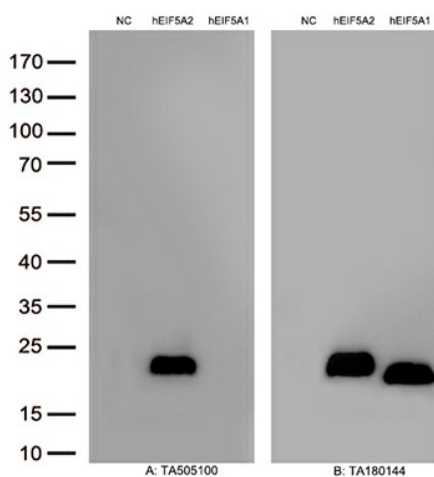
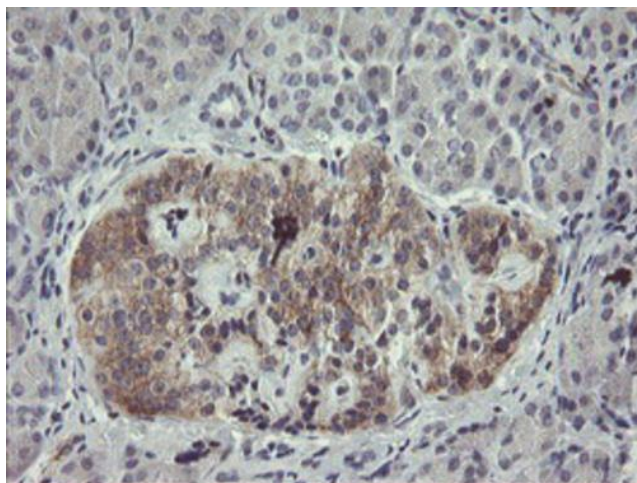
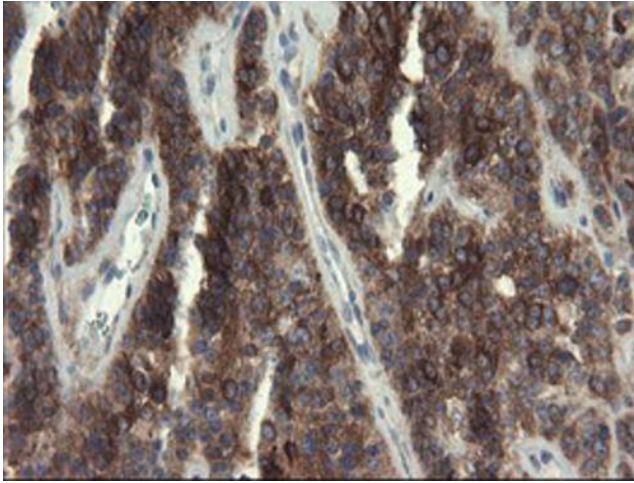


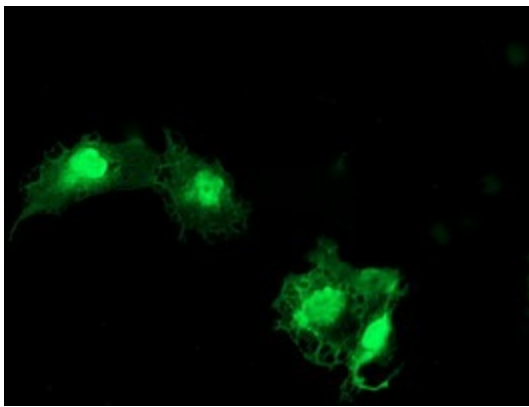
Figure A, Western blot analysis of overexpressed lysates(15ug per lane) from HEK293T cells transfected with empty plasmid ([PS100001], NC), human EIF5A2 plasmid ([RC206249], hEIF5A2), human EIF5A1 plasmid ([RC200770], hEIF5A1) using anti-EIF5A2 antibody [TA505100](1:500). Figure B, Western blot analysis of the same samples as figure A with anti-DDK antibody ([TA180144], 1:1000)



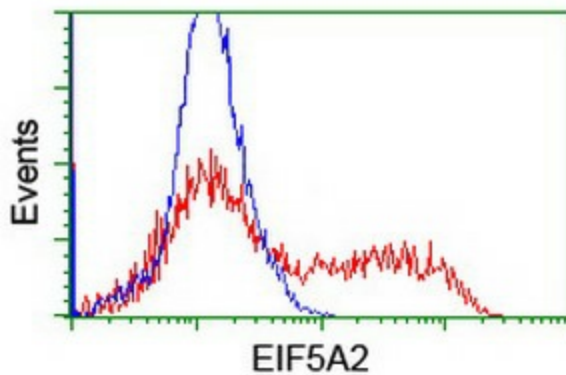
Immunohistochemical staining of paraffin-embedded Human pancreas tissue within the normal limits using anti-EIF5A2 mouse monoclonal antibody. (Heat-induced epitope retrieval by 10mM citric buffer, pH6.0, 100°C for 10min, [TA505100])



Immunohistochemical staining of paraffin-embedded Carcinoma of Human pancreas tissue using anti-EIF5A2 mouse monoclonal antibody. (Heat-induced epitope retrieval by 10mM citric buffer, pH6.0, 100°C for 10min, [TA505100])



Anti-EIF5A2 mouse monoclonal antibody ([TA505100]) immunofluorescent staining of COS7 cells transiently transfected by pCMV6-ENTRY EIF5A2 ([RC206249]).



HEK293T cells transfected with either [RC206249] overexpress plasmid (Red) or empty vector control plasmid (Blue) were immunostained by anti-EIF5A2 antibody ([TA505100]), and then analyzed by flow cytometry.