

## Product datasheet for **CF505088**

### **LEPRE1 (P3H1) Mouse Monoclonal Antibody [Clone ID: OTI1H3]**

#### **Product data:**

<b>Product Type:</b>	Primary Antibodies
<b>Clone Name:</b>	OTI1H3
<b>Applications:</b>	FC, IHC, WB
<b>Recommended Dilution:</b>	WB 1:2000, IHC 1:150, FLOW 1:100
<b>Reactivity:</b>	Human
<b>Host:</b>	Mouse
<b>Isotype:</b>	IgG1
<b>Clonality:</b>	Monoclonal
<b>Immunogen:</b>	Full length human recombinant protein of human LEPRE1(NP_071751) produced in HEK293T cell.
<b>Formulation:</b>	Lyophilized powder (original buffer 1X PBS, pH 7.3, 8% trehalose)
<b>Reconstitution Method:</b>	For reconstitution, we recommend adding 100uL distilled water to a final antibody concentration of about 1 mg/mL. To use this carrier-free antibody for conjugation experiment, we strongly recommend performing another round of desalting process. (OriGene recommends Zeba Spin Desalting Columns, 7KMWCO from Thermo Scientific)
<b>Purification:</b>	Purified from mouse ascites fluids or tissue culture supernatant by affinity chromatography (protein A/G)
<b>Conjugation:</b>	Unconjugated
<b>Storage:</b>	Store at -20°C as received.
<b>Stability:</b>	Stable for 12 months from date of receipt.
<b>Predicted Protein Size:</b>	83.2 kDa
<b>Gene Name:</b>	prolyl 3-hydroxylase 1
<b>Database Link:</b>	<a href="#">NP_071751</a> <a href="#">Entrez Gene 64175 Human</a> <a href="#">Q32P28</a>



[View online »](#)

**Background:**

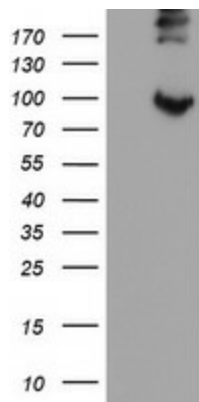
This gene encodes an enzyme that is a member of the collagen prolyl hydroxylase family. These enzymes are localized to the endoplasmic reticulum and their activity is required for proper collagen synthesis and assembly. Mutations in this gene are associated with osteogenesis imperfecta type VIII. Two alternatively spliced transcript variants encoding different isoforms have been described. Other variants may exist, but their biological validity has not been determined. [provided by RefSeq]

**Synonyms:**

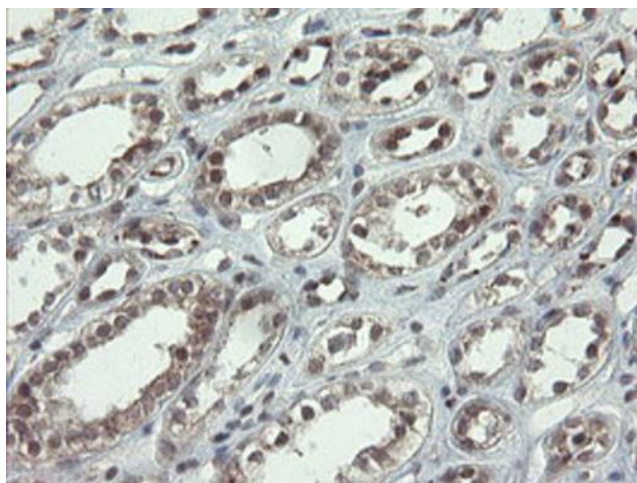
GROS1; LEPRE1; OI8

**Protein Families:**

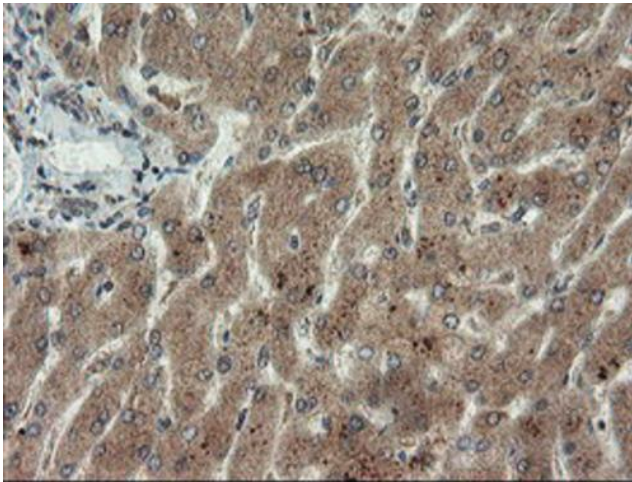
Secreted Protein

**Product images:**

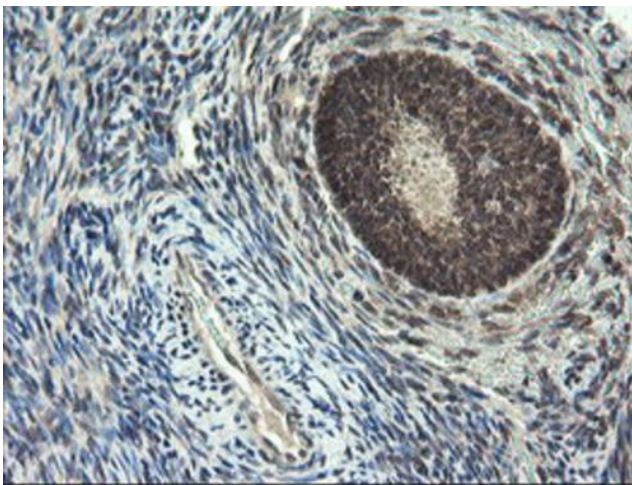
HEK293T cells were transfected with the pCMV6-ENTRY control (Cat# [PS100001], Left lane) or pCMV6-ENTRY LEPRE1 (Cat# [RC222535], Right lane) cDNA for 48 hrs and lysed. Equivalent amounts of cell lysates (5 ug per lane) were separated by SDS-PAGE and immunoblotted with anti-LEPRE1 (Cat# [TA505088]). Positive lysates [LY411682] (100ug) and [LC411682] (20ug) can be purchased separately from OriGene.



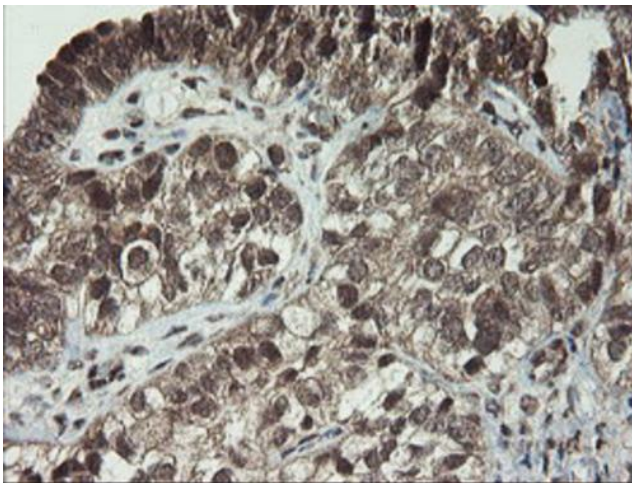
Immunohistochemical staining of paraffin-embedded Human Kidney tissue within the normal limits using anti-LEPRE1 mouse monoclonal antibody. (Heat-induced epitope retrieval by 10mM citric buffer, pH6.0, 100°C for 10min, [TA505088])



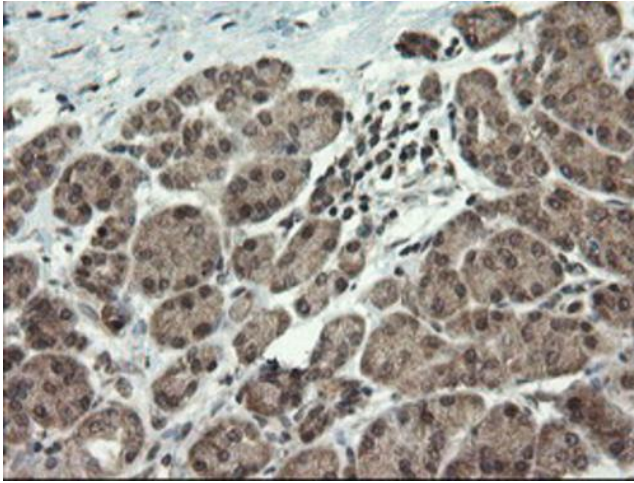
Immunohistochemical staining of paraffin-embedded Human liver tissue within the normal limits using anti-LEPRE1 mouse monoclonal antibody. (Heat-induced epitope retrieval by 10mM citric buffer, pH6.0, 100°C for 10min, [TA505088])



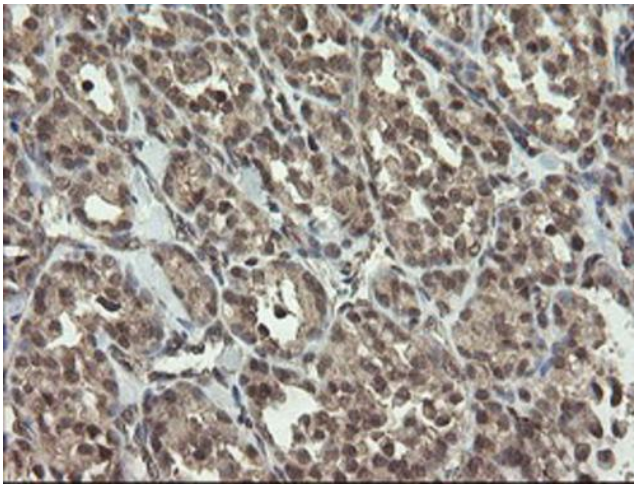
Immunohistochemical staining of paraffin-embedded Human Ovary tissue within the normal limits using anti-LEPRE1 mouse monoclonal antibody. (Heat-induced epitope retrieval by 10mM citric buffer, pH6.0, 100°C for 10min, [TA505088])



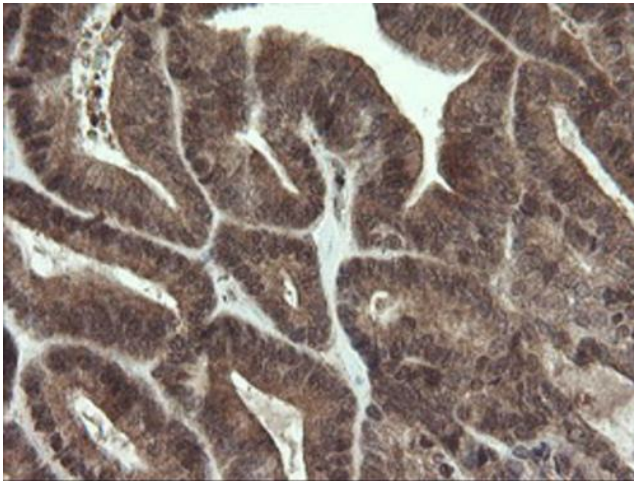
Immunohistochemical staining of paraffin-embedded Adenocarcinoma of Human ovary tissue using anti-LEPRE1 mouse monoclonal antibody. (Heat-induced epitope retrieval by 10mM citric buffer, pH6.0, 100°C for 10min, [TA505088])



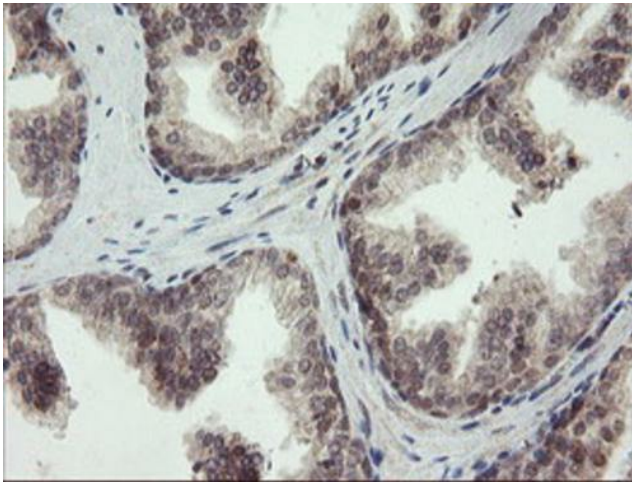
Immunohistochemical staining of paraffin-embedded Human pancreas tissue within the normal limits using anti-LEPRE1 mouse monoclonal antibody. (Heat-induced epitope retrieval by 10mM citric buffer, pH6.0, 100°C for 10min, [TA505088])



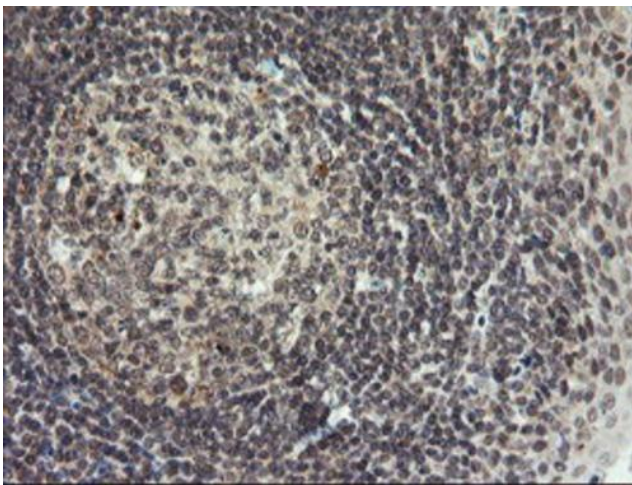
Immunohistochemical staining of paraffin-embedded Carcinoma of Human thyroid tissue using anti-LEPRE1 mouse monoclonal antibody. (Heat-induced epitope retrieval by 10mM citric buffer, pH6.0, 100°C for 10min, [TA505088])



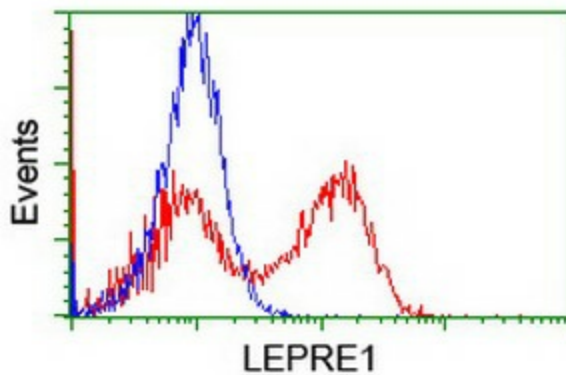
Immunohistochemical staining of paraffin-embedded Adenocarcinoma of Human endometrium tissue using anti-LEPRE1 mouse monoclonal antibody. (Heat-induced epitope retrieval by 10mM citric buffer, pH6.0, 100°C for 10min, [TA505088])



Immunohistochemical staining of paraffin-embedded Human prostate tissue within the normal limits using anti-LEPRE1 mouse monoclonal antibody. (Heat-induced epitope retrieval by 10mM citric buffer, pH6.0, 100°C for 10min, [TA505088])



Immunohistochemical staining of paraffin-embedded Human tonsil within the normal limits using anti-LEPRE1 mouse monoclonal antibody. (Heat-induced epitope retrieval by 10mM citric buffer, pH6.0, 100°C for 10min, [TA505088])



HEK293T cells transfected with either [RC222535] overexpress plasmid (Red) or empty vector control plasmid (Blue) were immunostained by anti-LEPRE1 antibody ([TA505088]), and then analyzed by flow cytometry.