

Product datasheet for CF505081

MMACHC Mouse Monoclonal Antibody [Clone ID: OTI6B5]

Product data:

Product Type:	Primary Antibodies
Clone Name:	OTI6B5
Applications:	FC, WB
Recommended Dilution:	WB 1:2000, FLOW 1:100
Reactivity:	Human
Host:	Mouse
Isotype:	IgG2b
Clonality:	Monoclonal
Immunogen:	Full length human recombinant protein of human MMACHC(NP_056321) produced in HEK293T cell.
Formulation:	Lyophilized powder (original buffer 1X PBS, pH 7.3, 8% trehalose)
Reconstitution Method:	For reconstitution, we recommend adding 100uL distilled water to a final antibody concentration of about 1 mg/mL. To use this carrier-free antibody for conjugation experiment, we strongly recommend performing another round of desalting process. (OriGene recommends Zeba Spin Desalting Columns, 7KMWCO from Thermo Scientific)
Purification:	Purified from mouse ascites fluids or tissue culture supernatant by affinity chromatography (protein A/G)
Conjugation:	Unconjugated
Storage:	Store at -20°C as received.
Stability:	Stable for 12 months from date of receipt.
Predicted Protein Size:	31.5 kDa
Gene Name:	metabolism of cobalamin associated C
Database Link:	NP_056321 Entrez Gene 25974 Human Q9Y4U1

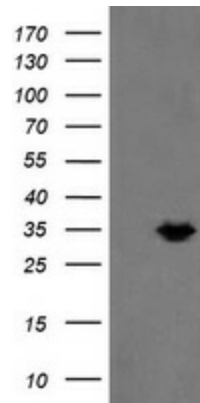
[View online »](#)

Background:

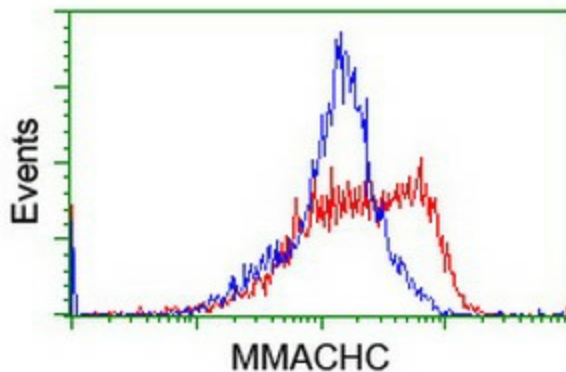
The exact function of the protein encoded by this gene is not known, however, its C-terminal region shows similarity to TonB, a bacterial protein involved in energy transduction for cobalamin (vitamin B12) uptake. Hence, it is postulated that this protein may have a role in the binding and intracellular trafficking of cobalamin. Mutations in this gene are associated with methylmalonic aciduria and homocystinuria type cblC. [provided by RefSeq]

Synonyms:

cblC

Product images:


HEK293T cells were transfected with the pCMV6-ENTRY control (Left lane) or pCMV6-ENTRY MMACHC ([RC223846], Right lane) cDNA for 48 hrs and lysed. Equivalent amounts of cell lysates (5 ug per lane) were separated by SDS-PAGE and immunoblotted with anti-MMACHC. Positive lysates [LY402444] (100ug) and [LC402444] (20ug) can be purchased separately from OriGene.



HEK293T cells transfected with either [RC223846] overexpress plasmid (Red) or empty vector control plasmid (Blue) were immunostained by anti-MMACHC antibody ([TA505081]), and then analyzed by flow cytometry.