

## Product datasheet for **CF505038**

### SCYL1BP1 (GORAB) Mouse Monoclonal Antibody [Clone ID: OTI4A4]

#### Product data:

Product Type:	Primary Antibodies
Clone Name:	OTI4A4
Applications:	FC, WB
Recommended Dilution:	WB 1:2000, FLOW 1:100
Reactivity:	Human
Host:	Mouse
Isotype:	IgG1
Clonality:	Monoclonal
Immunogen:	Human recombinant protein fragment corresponding to amino acids 35-394 of human GORAB(NP_689494) produced in E.coli.
Formulation:	Lyophilized powder (original buffer 1X PBS, pH 7.3, 8% trehalose)
Reconstitution Method:	For reconstitution, we recommend adding 100uL distilled water to a final antibody concentration of about 1 mg/mL. To use this carrier-free antibody for conjugation experiment, we strongly recommend performing another round of desalting process. (OriGene recommends Zeba Spin Desalting Columns, 7KMWCO from Thermo Scientific)
Purification:	Purified from mouse ascites fluids or tissue culture supernatant by affinity chromatography (protein A/G)
Conjugation:	Unconjugated
Storage:	Store at -20°C as received.
Stability:	Stable for 12 months from date of receipt.
Predicted Protein Size:	44.8 kDa
Gene Name:	golgin, RAB6 interacting
Database Link:	<a href="#">NP_689494</a> <a href="#">Entrez Gene 92344 Human</a> <a href="#">Q5T7V8</a>



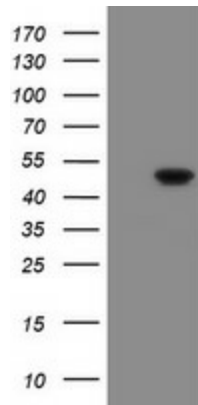
[View online »](#)

**Background:**

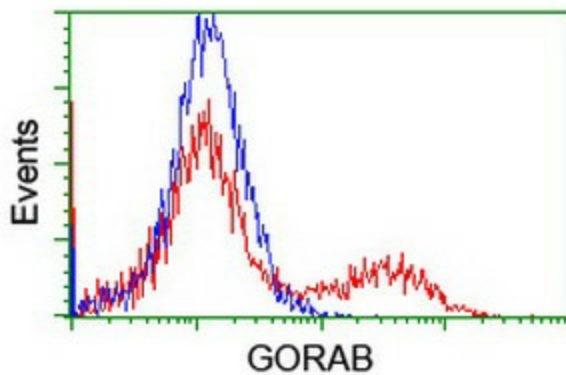
This gene encodes a member of the golgin family, a group of coiled-coil proteins localized to the Golgi. The encoded protein may function in the secretory pathway. The encoded protein, which also localizes to the cytoplasm, was identified by interactions with the N-terminal kinase-like protein, and thus it may function in mitosis. Mutations in this gene have been associated with geroderma osteodysplastica. Alternatively spliced transcript variants have been described. [provided by RefSeq]

**Synonyms:**

GO; NTKLBP1; SCYL1BP1

**Product images:**


HEK293T cells were transfected with the pCMV6-ENTRY control (Left lane) or pCMV6-ENTRY GORAB ([RC212883], Right lane) cDNA for 48 hrs and lysed. Equivalent amounts of cell lysates (5 ug per lane) were separated by SDS-PAGE and immunoblotted with anti-GORAB. Positive lysates [LY407701] (100ug) and [LC407701] (20ug) can be purchased separately from OriGene.



HEK293T cells transfected with either [RC212883] overexpress plasmid (Red) or empty vector control plasmid (Blue) were immunostained by anti-GORAB antibody ([TA505038]), and then analyzed by flow cytometry.