

Product datasheet for **CF505025**

C1ORF151 (MINOS1) Mouse Monoclonal Antibody [Clone ID: OTI4H7]

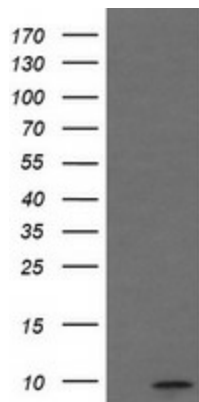
Product data:

Product Type:	Primary Antibodies
Clone Name:	OTI4H7
Applications:	IHC, WB
Recommended Dilution:	WB 1:1000, IHC 1:150
Reactivity:	Human
Host:	Mouse
Isotype:	IgG2b
Clonality:	Monoclonal
Immunogen:	Full length human recombinant protein of human C1orf151(NP_001007535) produced in HEK293T cell.
Formulation:	Lyophilized powder (original buffer 1X PBS, pH 7.3, 8% trehalose)
Reconstitution Method:	For reconstitution, we recommend adding 100uL distilled water to a final antibody concentration of about 1 mg/mL. To use this carrier-free antibody for conjugation experiment, we strongly recommend performing another round of desalting process. (OriGene recommends Zeba Spin Desalting Columns, 7KMWCO from Thermo Scientific)
Purification:	Purified from mouse ascites fluids or tissue culture supernatant by affinity chromatography (protein A/G)
Conjugation:	Unconjugated
Storage:	Store at -20°C as received.
Stability:	Stable for 12 months from date of receipt.
Predicted Protein Size:	8.6 kDa
Gene Name:	mitochondrial contact site and cristae organizing system subunit 10
Database Link:	NP_001027535 Entrez Gene 440574 Human Q5TGZ0
Synonyms:	C1orf151; Mic10; MIO10
Protein Families:	Transmembrane

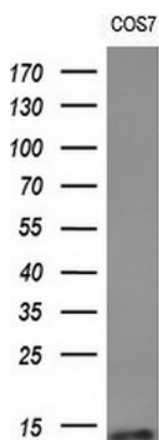


[View online »](#)

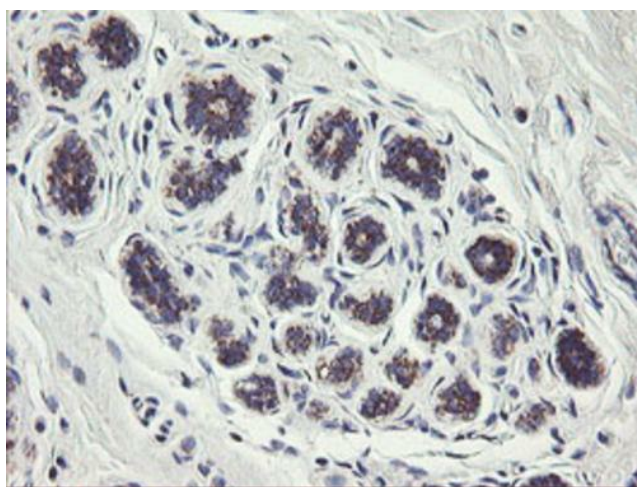
Product images:



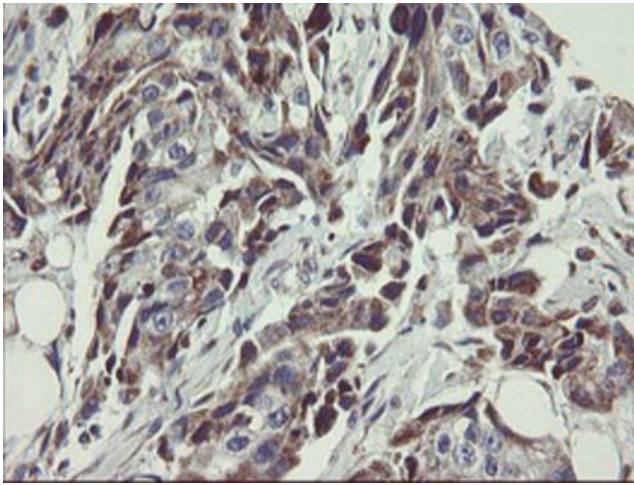
HEK293T cells were transfected with the pCMV6-ENTRY control (Cat# [PS100001], Left lane) or pCMV6-ENTRY C1orf151 (Cat# [RC212930], Right lane) cDNA for 48 hrs and lysed. Equivalent amounts of cell lysates (5 ug per lane) were separated by SDS-PAGE and immunoblotted with anti-C1orf151(Cat# [TA505025]). Positive lysates [LY422307] (100ug) and [LC422307] (20ug) can be purchased separately from OriGene.



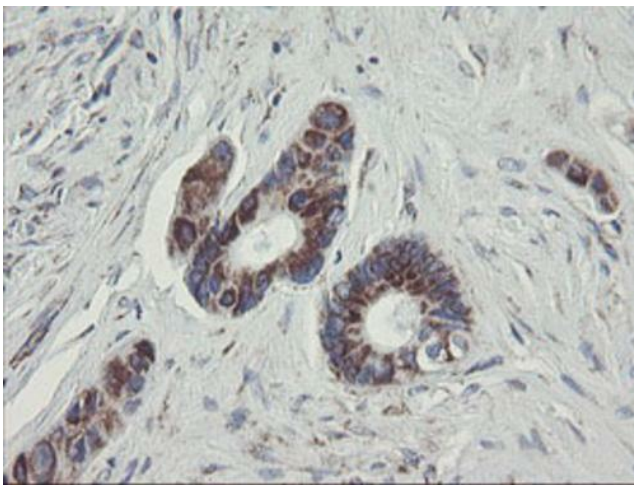
Western blot analysis of extracts (10ug) from 5 different cell lines by using anti-C1orf151 monoclonal antibody (1:200).



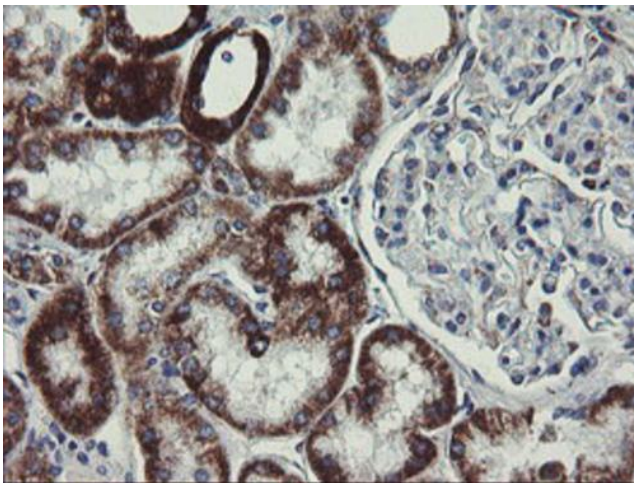
Immunohistochemical staining of paraffin-embedded Human breast tissue within the normal limits using anti-C1orf151 mouse monoclonal antibody. (Heat-induced epitope retrieval by 10mM citric buffer, pH6.0, 120°C for 3min, [TA505025])



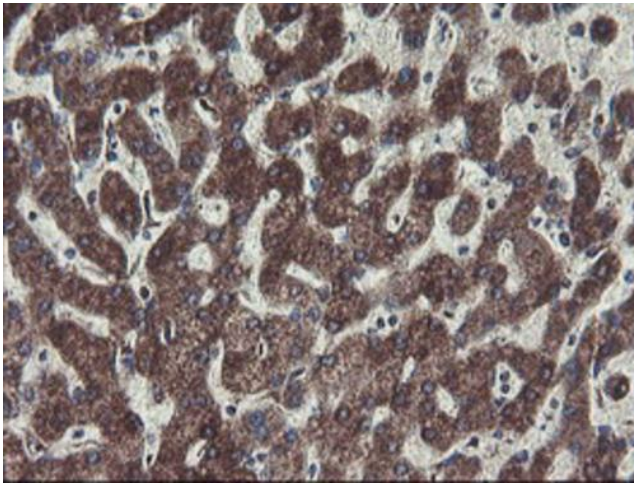
Immunohistochemical staining of paraffin-embedded Adenocarcinoma of Human breast tissue using anti-C1orf151 mouse monoclonal antibody. (Heat-induced epitope retrieval by 10mM citric buffer, pH6.0, 120°C for 3min, [TA505025])



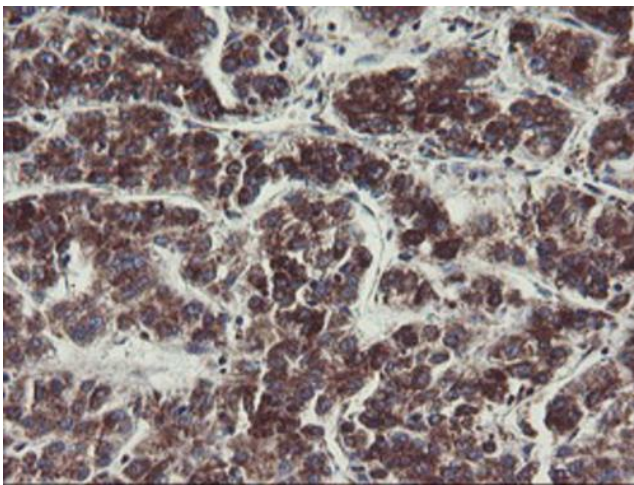
Immunohistochemical staining of paraffin-embedded Human colon tissue within the normal limits using anti-C1orf151 mouse monoclonal antibody. (Heat-induced epitope retrieval by 10mM citric buffer, pH6.0, 120°C for 3min, [TA505025])



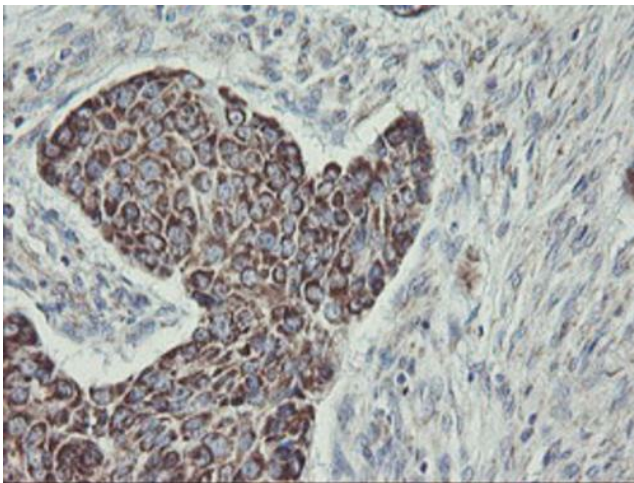
Immunohistochemical staining of paraffin-embedded Human Kidney tissue within the normal limits using anti-C1orf151 mouse monoclonal antibody. (Heat-induced epitope retrieval by 10mM citric buffer, pH6.0, 120°C for 3min, [TA505025])



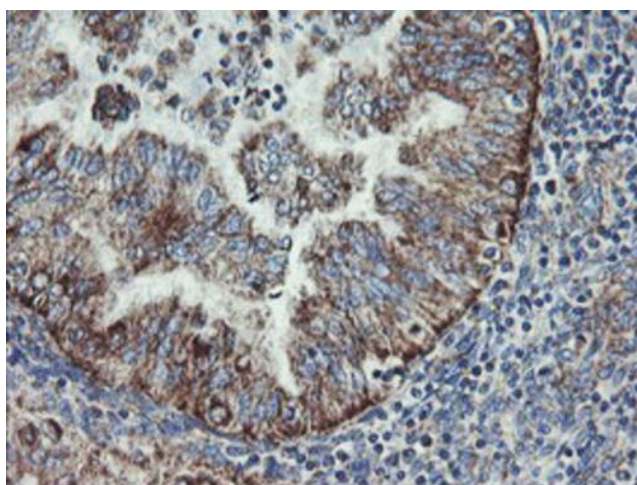
Immunohistochemical staining of paraffin-embedded Human liver tissue within the normal limits using anti-C1orf151 mouse monoclonal antibody. (Heat-induced epitope retrieval by 10mM citric buffer, pH6.0, 120°C for 3min, [TA505025])



Immunohistochemical staining of paraffin-embedded Carcinoma of Human liver tissue using anti-C1orf151 mouse monoclonal antibody. (Heat-induced epitope retrieval by 10mM citric buffer, pH6.0, 120°C for 3min, [TA505025])



Immunohistochemical staining of paraffin-embedded Carcinoma of Human lung tissue using anti-C1orf151 mouse monoclonal antibody. (Heat-induced epitope retrieval by 10mM citric buffer, pH6.0, 120°C for 3min, [TA505025])



Immunohistochemical staining of paraffin-embedded Adenocarcinoma of Human endometrium tissue using anti-C1orf151 mouse monoclonal antibody. (Heat-induced epitope retrieval by 10mM citric buffer, pH6.0, 120°C for 3min, [TA505025])