

## Product datasheet for **CF504993**

### ERp57 (PDIA3) Mouse Monoclonal Antibody [Clone ID: OTI2D2]

#### Product data:

Product Type:	Primary Antibodies
Clone Name:	OTI2D2
Applications:	IF, WB
Recommended Dilution:	WB 1:500, IF 1:100
Reactivity:	Human, Mouse, Rat
Host:	Mouse
Isotype:	IgG1
Clonality:	Monoclonal
Immunogen:	Human recombinant protein fragment corresponding to amino acids 140-505 of human PDIA3(NP_005304) produced in E.coli.
Formulation:	Lyophilized powder (original buffer 1X PBS, pH 7.3, 8% trehalose)
Reconstitution Method:	For reconstitution, we recommend adding 100uL distilled water to a final antibody concentration of about 1 mg/mL. To use this carrier-free antibody for conjugation experiment, we strongly recommend performing another round of desalting process. (OriGene recommends Zeba Spin Desalting Columns, 7KMWCO from Thermo Scientific)
Purification:	Purified from mouse ascites fluids or tissue culture supernatant by affinity chromatography (protein A/G)
Conjugation:	Unconjugated
Storage:	Store at -20°C as received.
Stability:	Stable for 12 months from date of receipt.
Predicted Protein Size:	54.2 kDa
Gene Name:	protein disulfide isomerase family A member 3
Database Link:	<a href="#">NP_005304</a> <a href="#">Entrez Gene 14827 Mouse</a> <a href="#">Entrez Gene 29468 Rat</a> <a href="#">Entrez Gene 2923 Human</a> <a href="#">P30101</a>



[View online »](#)

**Background:**

This gene encodes a protein of the endoplasmic reticulum that interacts with lectin chaperones calreticulin and calnexin to modulate folding of newly synthesized glycoproteins. The protein was once thought to be a phospholipase; however, it has been demonstrated that the protein actually has protein disulfide isomerase activity. It is thought that complexes of lectins and this protein mediate protein folding by promoting formation of disulfide bonds in their glycoprotein substrates. [provided by RefSeq, Jul 2008]

**Synonyms:**

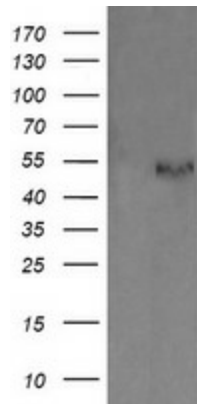
ER60; ERp57; ERp60; ERp61; GRP57; GRP58; HEL-S-93n; HEL-S-269; HsT17083; P58; PI-PLC

**Protein Families:**

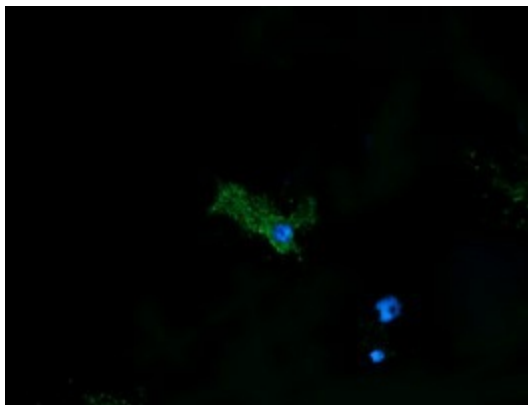
Druggable Genome

**Protein Pathways:**

Antigen processing and presentation

**Product images:**


HEK293T cells were transfected with the pCMV6-ENTRY control (Left lane) or pCMV6-ENTRY PDIA3 ([RC205940], Right lane) cDNA for 48 hrs and lysed. Equivalent amounts of cell lysates (5 ug per lane) were separated by SDS-PAGE and immunoblotted with anti-PDIA3. Positive lysates [LY401637] (100ug) and [LC401637] (20ug) can be purchased separately from OriGene.



Anti-PDIA3 mouse monoclonal antibody ([TA504993]) immunofluorescent staining of COS7 cells transiently transfected by pCMV6-ENTRY PDIA3 ([RC205940]).