

## Product datasheet for **CF504958**

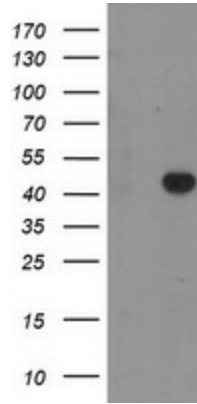
### **RAB3IL1 Mouse Monoclonal Antibody [Clone ID: OTI1B5]**

#### **Product data:**

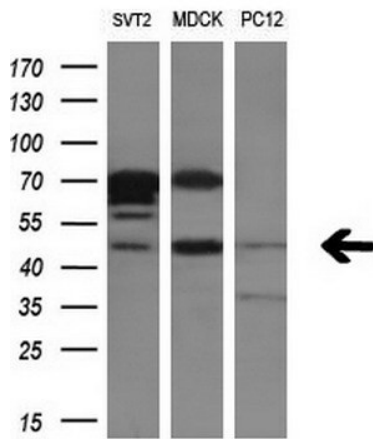
Product Type:	Primary Antibodies
Clone Name:	OTI1B5
Applications:	FC, WB
Recommended Dilution:	WB 1:2000, FLOW 1:100
Reactivity:	Human, Mouse, Rat
Host:	Mouse
Isotype:	IgG1
Clonality:	Monoclonal
Immunogen:	Full length human recombinant protein of human RAB3IL1(NP_037533) produced in HEK293T cell.
Formulation:	Lyophilized powder (original buffer 1X PBS, pH 7.3, 8% trehalose)
Reconstitution Method:	For reconstitution, we recommend adding 100uL distilled water to a final antibody concentration of about 1 mg/mL. To use this carrier-free antibody for conjugation experiment, we strongly recommend performing another round of desalting process. (OriGene recommends Zeba Spin Desalting Columns, 7KMWCO from Thermo Scientific)
Purification:	Purified from mouse ascites fluids or tissue culture supernatant by affinity chromatography (protein A/G)
Conjugation:	Unconjugated
Storage:	Store at -20°C as received.
Stability:	Stable for 12 months from date of receipt.
Predicted Protein Size:	42.5 kDa
Gene Name:	RAB3A interacting protein like 1
Database Link:	<a href="#">NP_037533</a> <a href="#">Entrez Gene 171452 Rat</a> <a href="#">Entrez Gene 5866 Human</a> <a href="#">Q8TBN0</a>
Synonyms:	GRAB



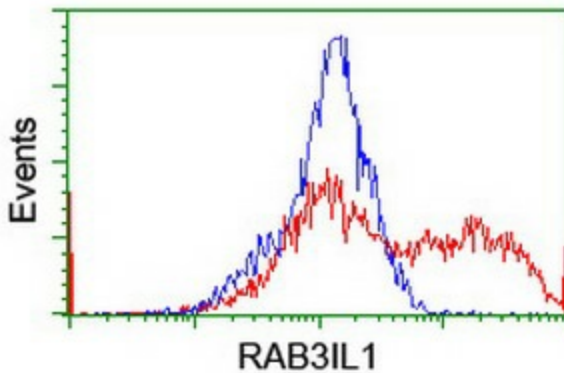
[View online »](#)

**Product images:**


HEK293T cells were transfected with the pCMV6-ENTRY control (Cat# [PS100001], Left lane) or pCMV6-ENTRY RAB3IL1 (Cat# [RC204592], Right lane) cDNA for 48 hrs and lysed. Equivalent amounts of cell lysates (5 ug per lane) were separated by SDS-PAGE and immunoblotted with anti-RAB3IL1(Cat# [TA504958]). Positive lysates [LY415621] (100ug) and [LC415621] (20ug) can be purchased separately from OriGene.



Western blot analysis of extracts (10ug) from 3 different cell lines by using anti-RAB3IL1 monoclonal antibody (1:200).



HEK293T cells transfected with either [RC204592] overexpress plasmid (Red) or empty vector control plasmid (Blue) were immunostained by anti-RAB3IL1 antibody ([TA504958]), and then analyzed by flow cytometry.