

## Product datasheet for **CF504949**

### SOX5 Mouse Monoclonal Antibody [Clone ID: OTI2A3]

#### Product data:

Product Type:	Primary Antibodies
Clone Name:	OTI2A3
Applications:	WB
Recommended Dilution:	WB 1:1000
Reactivity:	Human, Mouse, Rat
Host:	Mouse
Isotype:	IgG3
Clonality:	Monoclonal
Immunogen:	Full length human recombinant protein of human SOX5(NP_008871) produced in HEK293T cell.
Formulation:	Lyophilized powder (original buffer 1X PBS, pH 7.3, 8% trehalose)
Reconstitution Method:	For reconstitution, we recommend adding 100uL distilled water to a final antibody concentration of about 1 mg/mL. To use this carrier-free antibody for conjugation experiment, we strongly recommend performing another round of desalting process. (OriGene recommends Zeba Spin Desalting Columns, 7KMWCO from Thermo Scientific)
Purification:	Purified from mouse ascites fluids or tissue culture supernatant by affinity chromatography (protein A/G)
Conjugation:	Unconjugated
Storage:	Store at -20°C as received.
Stability:	Stable for 12 months from date of receipt.
Predicted Protein Size:	83.8 kDa
Gene Name:	SRY-box transcription factor 5
Database Link:	<a href="#">NP_008871</a> <a href="#">Entrez Gene 20678 Mouse</a> <a href="#">Entrez Gene 140587 Rat</a> <a href="#">Entrez Gene 6660 Human</a> <a href="#">P35711</a>



[View online »](#)

**Background:**

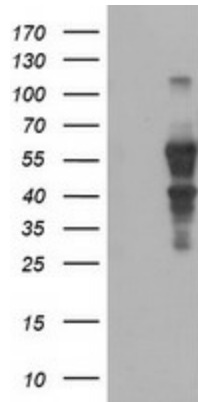
This gene encodes a member of the SOX (SRY-related HMG-box) family of transcription factors involved in the regulation of embryonic development and in the determination of the cell fate. The encoded protein may act as a transcriptional regulator after forming a protein complex with other proteins. The encoded protein may play a role in chondrogenesis. A pseudogene of this gene is located on chromosome 8. Multiple transcript variants encoding distinct isoforms have been identified for this gene. [provided by RefSeq]

**Synonyms:**

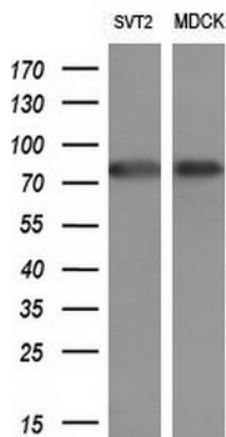
L-SOX5; L-SOX5B; L-SOX5F; LAMSHF

**Protein Families:**

Transcription Factors

**Product images:**


HEK293T cells were transfected with the pCMV6-ENTRY control (Cat# [PS100001], Left lane) or pCMV6-ENTRY SOX5 (Cat# [RC224228], Right lane) cDNA for 48 hrs and lysed. Equivalent amounts of cell lysates (5 ug per lane) were separated by SDS-PAGE and immunoblotted with anti-SOX5 (Cat# [TA504949]). Positive lysates [LY402064] (100ug) and [LC402064] (20ug) can be purchased separately from OriGene.



Western blot analysis of extracts (10ug) from 2 different cell lines by using anti-SOX5 monoclonal antibody (1:200).