

Product datasheet for **CF504907**

SLUG (SNAI2) Mouse Monoclonal Antibody [Clone ID: OTI2B12]

Product data:

Product Type:	Primary Antibodies
Clone Name:	OTI2B12
Applications:	IF, WB
Recommended Dilution:	WB 1:1000, IF 1:100
Reactivity:	Human, Mouse, Rat
Host:	Mouse
Isotype:	IgG1
Clonality:	Monoclonal
Immunogen:	negative.
Formulation:	Lyophilized powder (original buffer 1X PBS, pH 7.3, 8% trehalose)
Reconstitution Method:	For reconstitution, we recommend adding 100uL distilled water to a final antibody concentration of about 1 mg/mL. To use this carrier-free antibody for conjugation experiment, we strongly recommend performing another round of desalting process. (OriGene recommends Zeba Spin Desalting Columns, 7KMWCO from Thermo Scientific)
Purification:	Purified from mouse ascites fluids or tissue culture supernatant by affinity chromatography (protein A/G)
Conjugation:	Unconjugated
Storage:	Store at -20°C as received.
Stability:	Stable for 12 months from date of receipt.
Predicted Protein Size:	29.8 kDa
Gene Name:	snail family transcriptional repressor 2
Database Link:	NP_003059 Entrez Gene 20583 MouseEntrez Gene 25554 RatEntrez Gene 6591 Human O43623



[View online »](#)

Background:

This gene encodes a member of the Snail family of C2H2-type zinc finger transcription factors. The encoded protein acts as a transcriptional repressor that binds to E-box motifs and is also likely to repress E-cadherin transcription in breast carcinoma. This protein is involved in epithelial-mesenchymal transitions and has antiapoptotic activity. Mutations in this gene may be associated with sporadic cases of neural tube defects. [provided by RefSeq]

Synonyms:

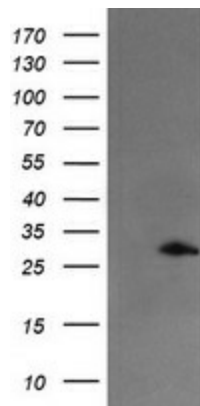
SLUG; SLUGH1; SNAIL2; WS2D

Protein Families:

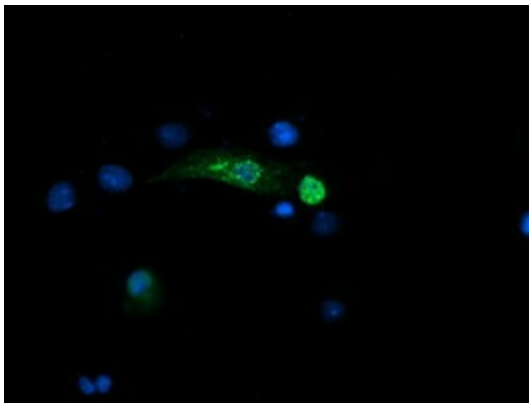
Druggable Genome, Transcription Factors

Protein Pathways:

Adherens junction

Product images:


HEK293T cells were transfected with the pCMV6-ENTRY control (Left lane) or pCMV6-ENTRY SNAI2 ([RC202365], Right lane) cDNA for 48 hrs and lysed. Equivalent amounts of cell lysates (5 ug per lane) were separated by SDS-PAGE and immunoblotted with anti-SNAI2. Positive lysates [LY401070] (100ug) and [LC401070] (20ug) can be purchased separately from OriGene.



Anti-SNAI2 mouse monoclonal antibody ([TA504907]) immunofluorescent staining of COS7 cells transiently transfected by pCMV6-ENTRY SNAI2 ([RC202365]).