

## Product datasheet for **CF504899**

### COMMD1 Mouse Monoclonal Antibody [Clone ID: OTI2E2]

#### Product data:

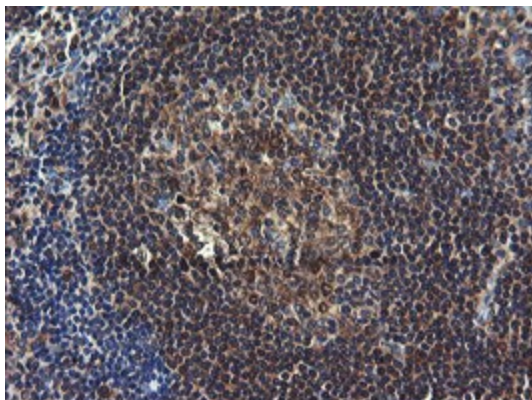
Product Type:	Primary Antibodies
Clone Name:	OTI2E2
Applications:	FC, IHC, WB
Recommended Dilution:	WB 1:2000, IHC 1:150, FLOW 1:100
Reactivity:	Human, Mouse, Rat
Host:	Mouse
Isotype:	IgG2a
Clonality:	Monoclonal
Immunogen:	Full length human recombinant protein of human COMMD1(NP_689729) produced in HEK293T cell.
Formulation:	Lyophilized powder (original buffer 1X PBS, pH 7.3, 8% trehalose)
Reconstitution Method:	For reconstitution, we recommend adding 100uL distilled water to a final antibody concentration of about 1 mg/mL. To use this carrier-free antibody for conjugation experiment, we strongly recommend performing another round of desalting process. (OriGene recommends Zeba Spin Desalting Columns, 7KMWCO from Thermo Scientific)
Purification:	Purified from mouse ascites fluids or tissue culture supernatant by affinity chromatography (protein A/G)
Conjugation:	Unconjugated
Storage:	Store at -20°C as received.
Stability:	Stable for 12 months from date of receipt.
Predicted Protein Size:	21 kDa
Gene Name:	Homo sapiens copper metabolism domain containing 1 (COMMD1), transcript variant 1, mRNA.
Database Link:	<a href="#">NP_689729</a> <a href="#">Entrez Gene 17846 Mouse</a> <a href="#">Entrez Gene 289831 Rat</a> <a href="#">Entrez Gene 150684 Human</a> <a href="#">Q8N668</a>
Background:	COMMD1 is a regulator of copper homeostasis, sodium uptake, and NF-kappa-B (see MIM 164011) signaling (de Bie et al., 2005 [PubMed 16267171]). [supplied by OMIM]



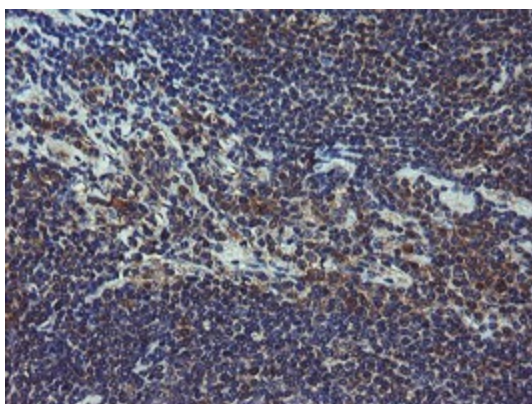
[View online »](#)

Synonyms: C2orf5; MURR1

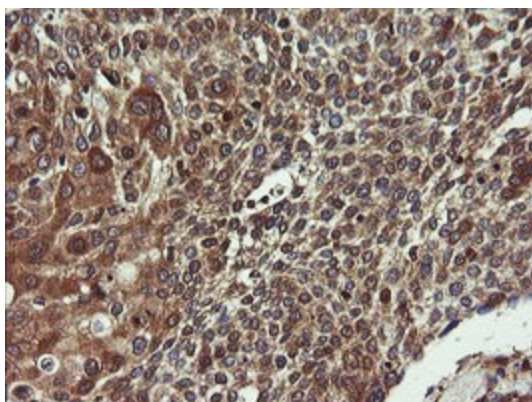
### Product images:



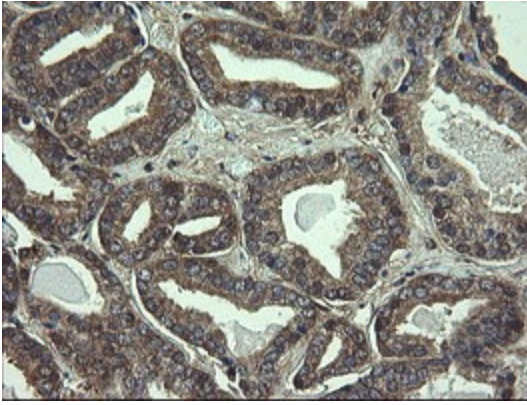
Immunohistochemical staining of paraffin-embedded Human tonsil within the normal limits using anti-COMMD1 mouse monoclonal antibody. (Heat-induced epitope retrieval by 10mM citric buffer, pH6.0, 100°C for 10min, [TA504899])



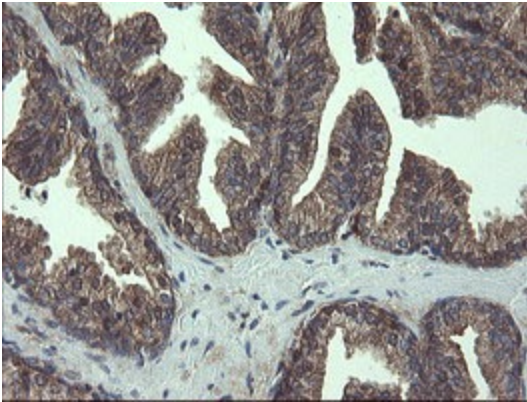
Immunohistochemical staining of paraffin-embedded Human lymphoma tissue using anti-COMMD1 mouse monoclonal antibody. (Heat-induced epitope retrieval by 10mM citric buffer, pH6.0, 100°C for 10min, [TA504899])



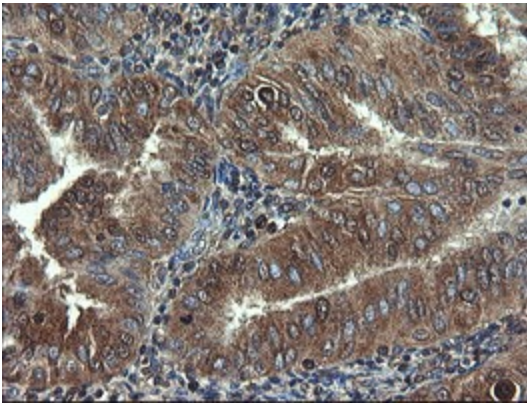
Immunohistochemical staining of paraffin-embedded Carcinoma of Human bladder tissue using anti-COMMD1 mouse monoclonal antibody. (Heat-induced epitope retrieval by 10mM citric buffer, pH6.0, 100°C for 10min, [TA504899])



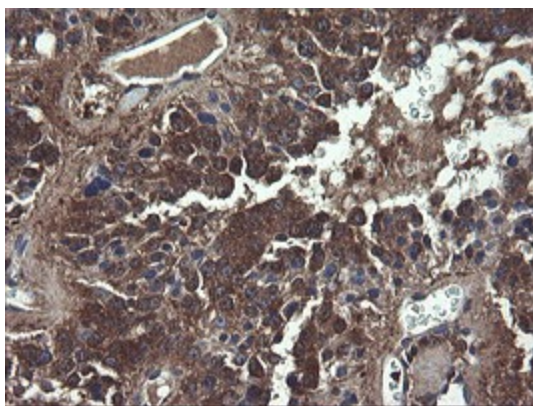
Immunohistochemical staining of paraffin-embedded Carcinoma of Human prostate tissue using anti-COMMD1 mouse monoclonal antibody. (Heat-induced epitope retrieval by 10mM citric buffer, pH6.0, 100°C for 10min, [TA504899])



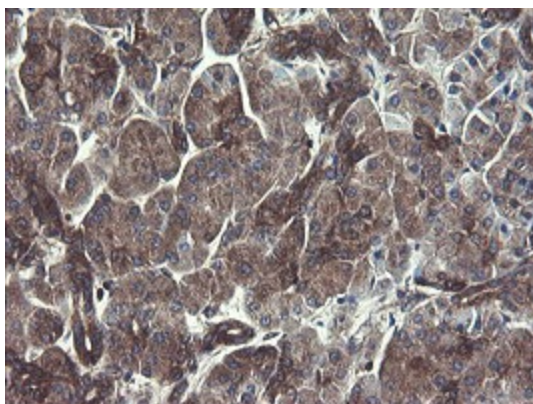
Immunohistochemical staining of paraffin-embedded Human prostate tissue within the normal limits using anti-COMMD1 mouse monoclonal antibody. (Heat-induced epitope retrieval by 10mM citric buffer, pH6.0, 100°C for 10min, [TA504899])



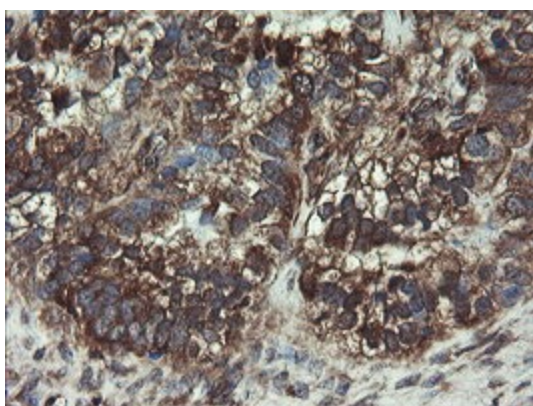
Immunohistochemical staining of paraffin-embedded Adenocarcinoma of Human endometrium tissue using anti-COMMD1 mouse monoclonal antibody. (Heat-induced epitope retrieval by 10mM citric buffer, pH6.0, 100°C for 10min, [TA504899])



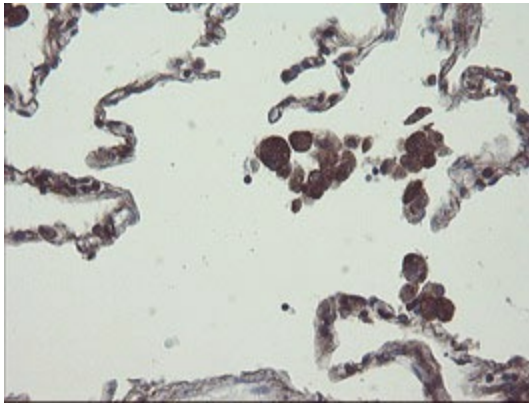
Immunohistochemical staining of paraffin-embedded Carcinoma of Human pancreas tissue using anti-COMMD1 mouse monoclonal antibody. (Heat-induced epitope retrieval by 10mM citric buffer, pH6.0, 100°C for 10min, [TA504899])



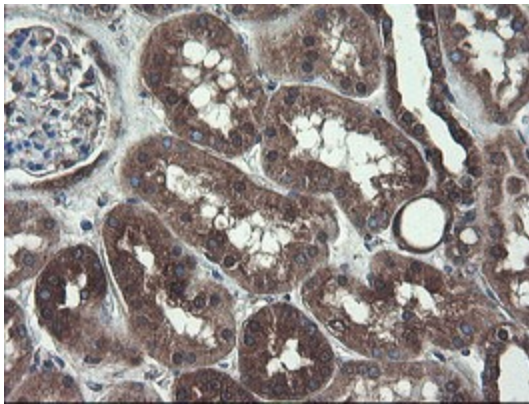
Immunohistochemical staining of paraffin-embedded Human pancreas tissue within the normal limits using anti-COMMD1 mouse monoclonal antibody. (Heat-induced epitope retrieval by 10mM citric buffer, pH6.0, 100°C for 10min, [TA504899])



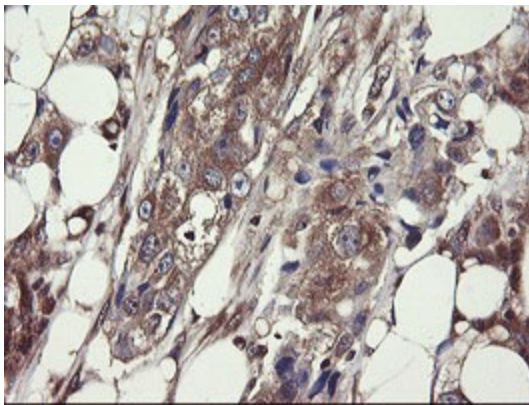
Immunohistochemical staining of paraffin-embedded Adenocarcinoma of Human ovary tissue using anti-COMMD1 mouse monoclonal antibody. (Heat-induced epitope retrieval by 10mM citric buffer, pH6.0, 100°C for 10min, [TA504899])



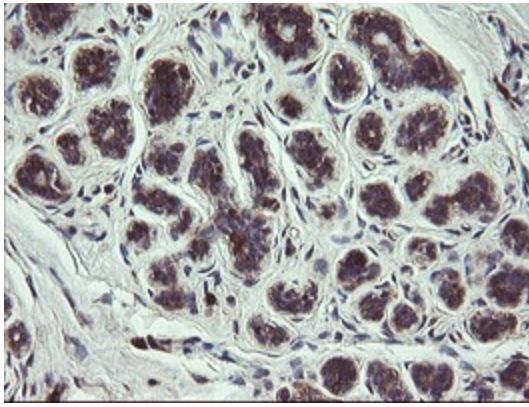
Immunohistochemical staining of paraffin-embedded Human lung tissue within the normal limits using anti-COMMD1 mouse monoclonal antibody. (Heat-induced epitope retrieval by 10mM citric buffer, pH6.0, 100°C for 10min, [TA504899])



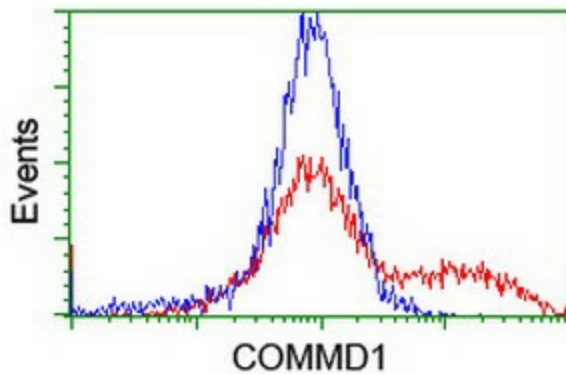
Immunohistochemical staining of paraffin-embedded Human Kidney tissue within the normal limits using anti-COMMD1 mouse monoclonal antibody. (Heat-induced epitope retrieval by 10mM citric buffer, pH6.0, 100°C for 10min, [TA504899])



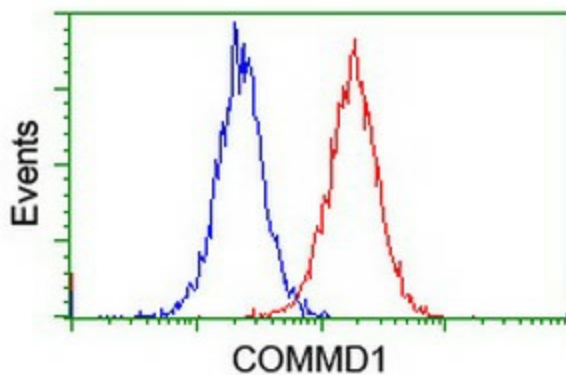
Immunohistochemical staining of paraffin-embedded Adenocarcinoma of Human breast tissue using anti-COMMD1 mouse monoclonal antibody. (Heat-induced epitope retrieval by 10mM citric buffer, pH6.0, 100°C for 10min, [TA504899])



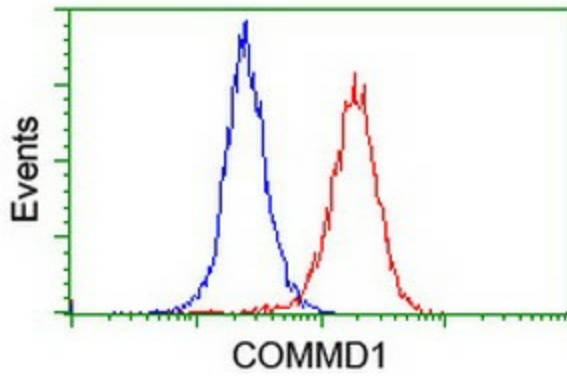
Immunohistochemical staining of paraffin-embedded Human breast tissue within the normal limits using anti-COMMD1 mouse monoclonal antibody. (Heat-induced epitope retrieval by 10mM citric buffer, pH6.0, 100°C for 10min, [TA504899])



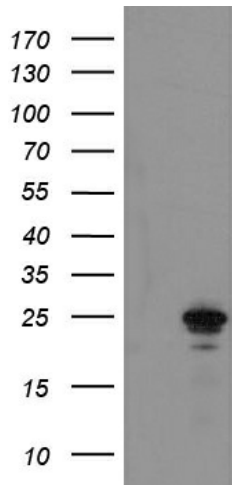
HEK293T cells transfected with either [RC205614] overexpress plasmid (Red) or empty vector control plasmid (Blue) were immunostained by anti-COMMD1 antibody ([TA504899]), and then analyzed by flow cytometry.



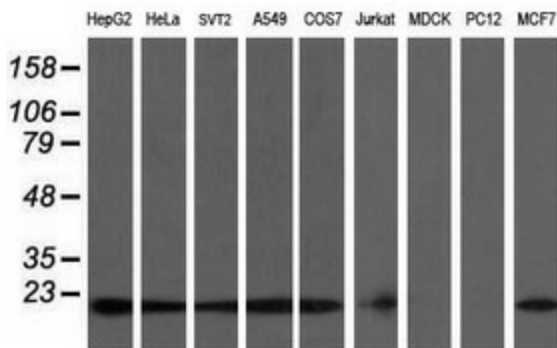
Flow cytometric Analysis of Jurkat cells, using anti-COMMD1 antibody ([TA504899]), (Red), compared to a nonspecific negative control antibody, (Blue).



Flow cytometric Analysis of HeLa cells, using anti-COMMD1 antibody ([TA504899]), (Red), compared to a nonspecific negative control antibody, (Blue).



HEK293T cells were transfected with the pCMV6-ENTRY control (Cat# [PS100001], Left lane) or pCMV6-ENTRY COMMD1 (Cat# [RC205614], Right lane) cDNA for 48 hrs and lysed. Equivalent amounts of cell lysates (5 ug per lane) were separated by SDS-PAGE and immunoblotted with anti-COMMD1 (Cat# [TA504899]). Positive lysates [LY403473] (100ug) and [LC403473] (20ug) can be purchased separately from OriGene.



Western blot analysis of extracts (35ug) from 9 different cell lines by using anti-COMMD1 monoclonal antibody (HepG2: human; HeLa: human; SVT2: mouse; A549: human; COS7: monkey; Jurkat: human; MDCK: canine; PC12: rat; MCF7: human).