

## Product datasheet for **CF504896**

### **PADI4 Mouse Monoclonal Antibody [Clone ID: OTI5C10]**

#### **Product data:**

Product Type:	Primary Antibodies
Clone Name:	OTI5C10
Applications:	IHC, WB
Recommended Dilution:	WB 1:2000, IHC 1:150
Reactivity:	Human
Host:	Mouse
Isotype:	IgG1
Clonality:	Monoclonal
Immunogen:	Human recombinant protein fragment corresponding to amino acids 299-588 of human PADI4(NP_036519) produced in E.coli.
Formulation:	Lyophilized powder (original buffer 1X PBS, pH 7.3, 8% trehalose)
Reconstitution Method:	For reconstitution, we recommend adding 100uL distilled water to a final antibody concentration of about 1 mg/mL. To use this carrier-free antibody for conjugation experiment, we strongly recommend performing another round of desalting process. (OriGene recommends Zeba Spin Desalting Columns, 7KMWCO from Thermo Scientific)
Purification:	Purified from mouse ascites fluids or tissue culture supernatant by affinity chromatography (protein A/G)
Conjugation:	Unconjugated
Storage:	Store at -20°C as received.
Stability:	Stable for 12 months from date of receipt.
Predicted Protein Size:	73.9 kDa
Gene Name:	peptidyl arginine deiminase 4
Database Link:	<a href="#">NP_036519</a> <a href="#">Entrez Gene 23569 Human</a> <a href="#">Q9UM07</a>



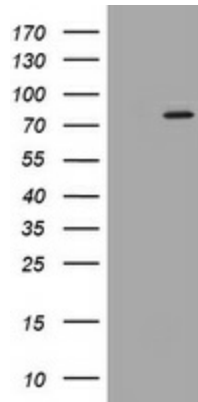
[View online »](#)

**Background:**

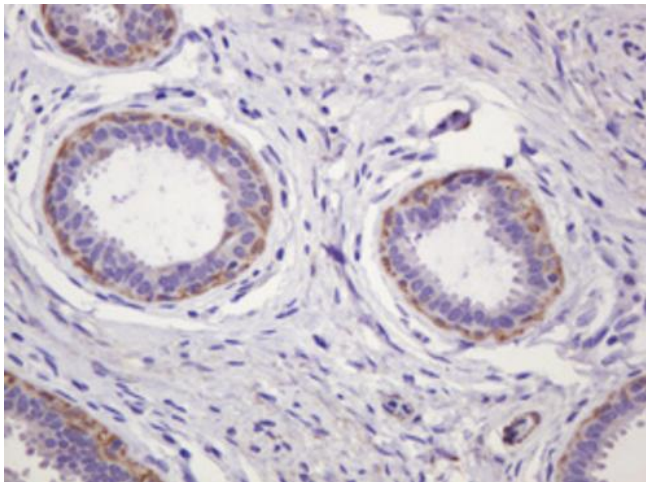
This gene is a member of a gene family which encodes enzymes responsible for the conversion of arginine residues to citrulline residues. This gene may play a role in granulocyte and macrophage development leading to inflammation and immune response. [provided by RefSeq, Jul 2008]

**Synonyms:**

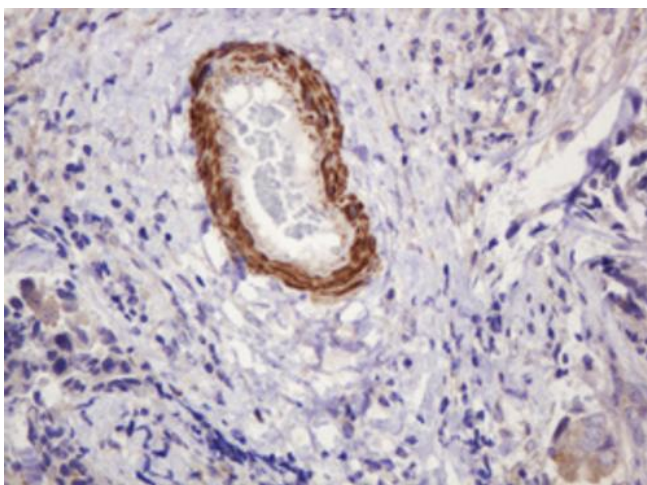
PAD; PAD4; PADI5; PDI4; PDI5

**Product images:**


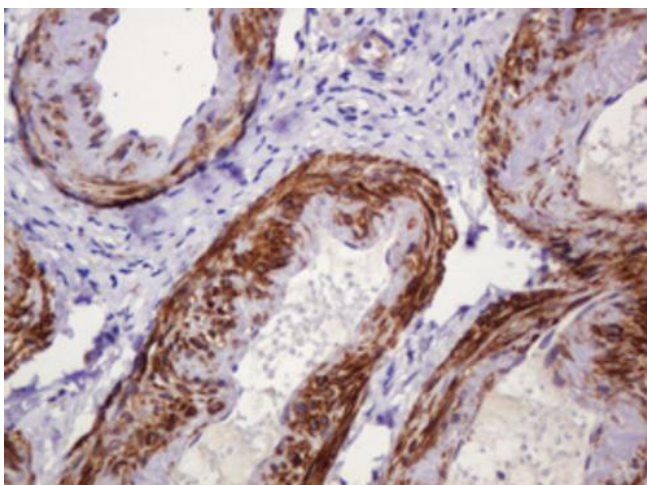
HEK293T cells were transfected with the pCMV6-ENTRY control (Left lane) or pCMV6-ENTRY PADI4 ([RC206501], Right lane) cDNA for 48 hrs and lysed. Equivalent amounts of cell lysates (5 ug per lane) were separated by SDS-PAGE and immunoblotted with anti-PADI4. Positive lysates [LY402202] (100ug) and [LC402202] (20ug) can be purchased separately from OriGene.



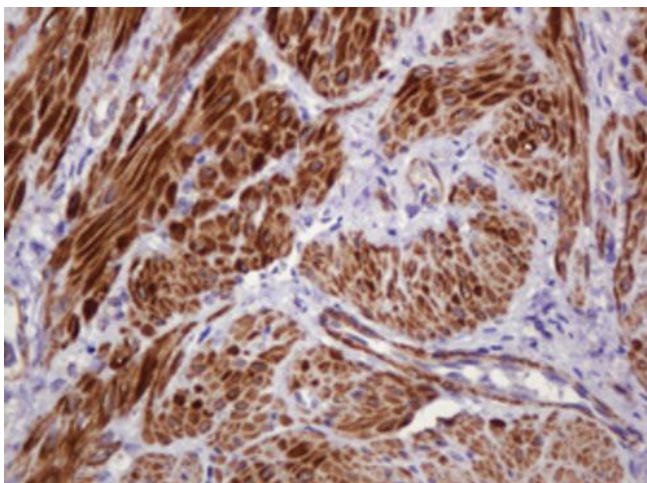
Immunohistochemical staining of paraffin-embedded Human breast tissue within the normal limits using anti-PADI4 mouse monoclonal antibody. (Heat-induced epitope retrieval by 10mM citric buffer, pH6.0, 120°C for 3min, [TA504896])



Immunohistochemical staining of paraffin-embedded Adenocarcinoma of Human breast tissue using anti-PADI4 mouse monoclonal antibody. (Heat-induced epitope retrieval by 10mM citric buffer, pH6.0, 120°C for 3min, [TA504896])

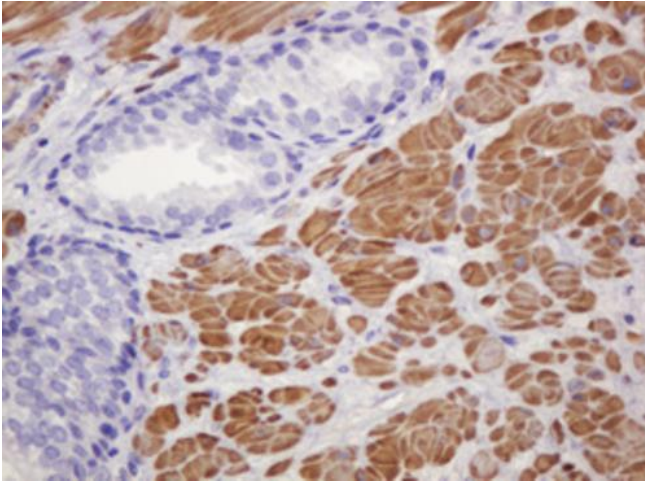


Immunohistochemical staining of paraffin-embedded Human Ovary tissue within the normal limits using anti-PADI4 mouse monoclonal antibody. (Heat-induced epitope retrieval by 10mM citric buffer, pH6.0, 120°C for 3min, [TA504896])

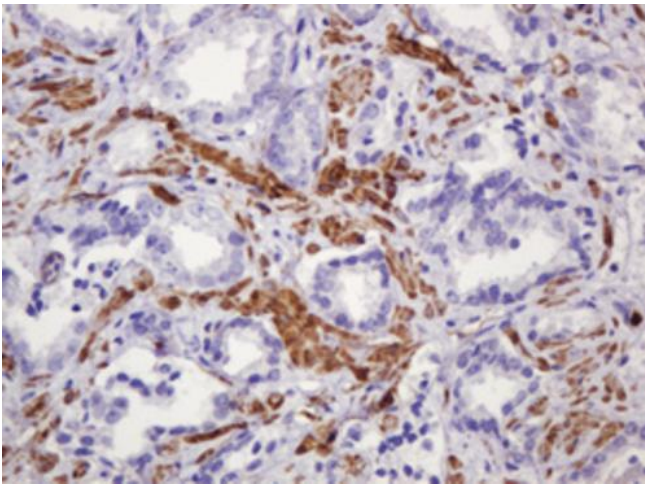


Immunohistochemical staining of paraffin-embedded Human endometrium tissue within the normal limits using anti-PADI4 mouse monoclonal antibody. (Heat-induced epitope retrieval by 10mM citric buffer, pH6.0, 120°C for 3min, [TA504896])

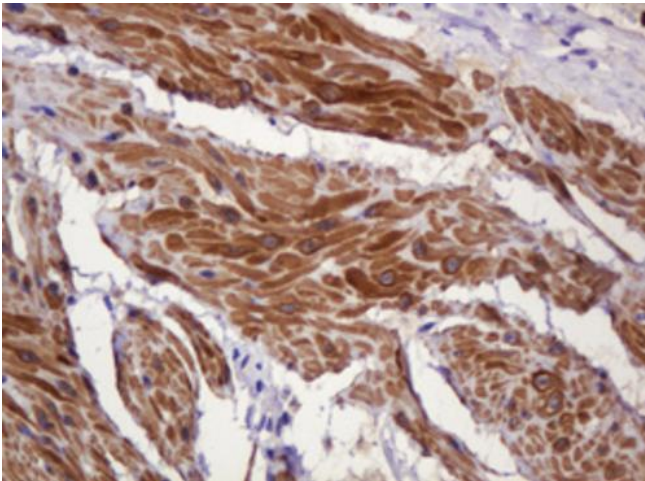




Immunohistochemical staining of paraffin-embedded Human prostate tissue within the normal limits using anti-PADI4 mouse monoclonal antibody. (Heat-induced epitope retrieval by 10mM citric buffer, pH6.0, 120°C for 3min, [TA504896])



Immunohistochemical staining of paraffin-embedded Carcinoma of Human prostate tissue using anti-PADI4 mouse monoclonal antibody. (Heat-induced epitope retrieval by 10mM citric buffer, pH6.0, 120°C for 3min, [TA504896])



Immunohistochemical staining of paraffin-embedded Human bladder tissue within the normal limits using anti-PADI4 mouse monoclonal antibody. (Heat-induced epitope retrieval by 10mM citric buffer, pH6.0, 120°C for 3min, [TA504896])