

Product datasheet for **CF504884**

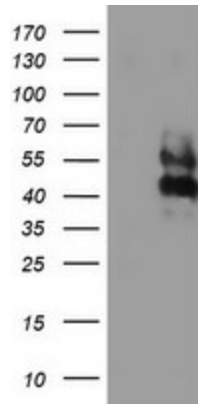
LRRC25 Mouse Monoclonal Antibody [Clone ID: OTI1C5]

Product data:

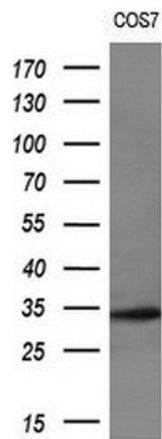
Product Type:	Primary Antibodies
Clone Name:	OTI1C5
Applications:	FC, WB
Recommended Dilution:	WB 1:1000, FLOW 1:100
Reactivity:	Human
Host:	Mouse
Isotype:	IgG1
Clonality:	Monoclonal
Immunogen:	Full length human recombinant protein of human LRRC25(NP_660299) produced in HEK293T cell.
Formulation:	Lyophilized powder (original buffer 1X PBS, pH 7.3, 8% trehalose)
Reconstitution Method:	For reconstitution, we recommend adding 100uL distilled water to a final antibody concentration of about 1 mg/mL. To use this carrier-free antibody for conjugation experiment, we strongly recommend performing another round of desalting process. (OriGene recommends Zeba Spin Desalting Columns, 7KMWCO from Thermo Scientific)
Purification:	Purified from mouse ascites fluids or tissue culture supernatant by affinity chromatography (protein A/G)
Conjugation:	Unconjugated
Storage:	Store at -20°C as received.
Stability:	Stable for 12 months from date of receipt.
Predicted Protein Size:	33 kDa
Gene Name:	leucine rich repeat containing 25
Database Link:	NP_660299 Entrez Gene 126364 Human Q8N386
Synonyms:	MAPA
Protein Families:	Transmembrane



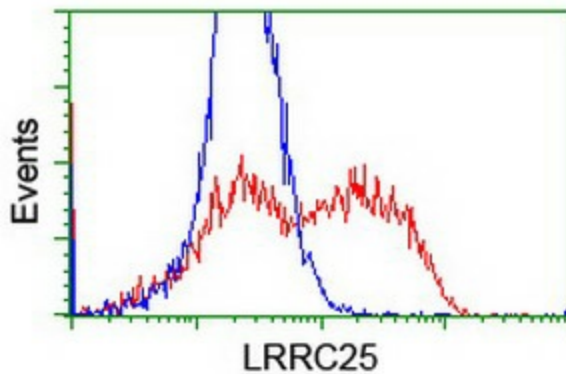
[View online »](#)

Product images:


HEK293T cells were transfected with the pCMV6-ENTRY control (Left lane) or pCMV6-ENTRY LRRC25 ([RC209911], Right lane) cDNA for 48 hrs and lysed. Equivalent amounts of cell lysates (5 ug per lane) were separated by SDS-PAGE and immunoblotted with anti-LRRC25. Positive lysates [LY407925] (100ug) and [LC407925] (20ug) can be purchased separately from OriGene.



Western blot analysis of extracts (10ug) from 1 cell line by using anti-LRRC25 monoclonal antibody (1:200).



HEK293T cells transfected with either [RC209911] overexpress plasmid (Red) or empty vector control plasmid (Blue) were immunostained by anti-LRRC25 antibody ([TA504884]), and then analyzed by flow cytometry.