

Product datasheet for **CF504862**

CD31 (PECAM1) Mouse Monoclonal Antibody [Clone ID: OTI1C2]

Product data:

Product Type:	Primary Antibodies
Clone Name:	OTI1C2
Applications:	FC, IF, IHC, WB
Recommended Dilution:	WB 1:200 - 1:1000, IHC 1:150, FLOW 1:50
Reactivity:	Human
Host:	Mouse
Isotype:	IgG1
Clonality:	Monoclonal
Immunogen:	Full length human recombinant protein of human PECAM1(NP_000433) produced in HEK293T cell.
Formulation:	Lyophilized powder (original buffer 1X PBS, pH 7.3, 8% trehalose)
Reconstitution Method:	For reconstitution, we recommend adding 100uL distilled water to a final antibody concentration of about 1 mg/mL. To use this carrier-free antibody for conjugation experiment, we strongly recommend performing another round of desalting process. (OriGene recommends Zeba Spin Desalting Columns, 7KMWCO from Thermo Scientific)
Purification:	Purified from mouse ascites fluids or tissue culture supernatant by affinity chromatography (protein A/G)
Conjugation:	Unconjugated
Storage:	Store at -20°C as received.
Stability:	Stable for 12 months from date of receipt.
Predicted Protein Size:	82.4 kDa
Gene Name:	platelet and endothelial cell adhesion molecule 1
Database Link:	NP_000433 Entrez Gene 5175 Human P16284



[View online »](#)

Background:

The protein encoded by this gene is found on the surface of platelets, monocytes, neutrophils, and some types of T-cells, and makes up a large portion of endothelial cell intercellular junctions. The encoded protein is a member of the immunoglobulin superfamily and is likely involved in leukocyte migration, angiogenesis, and integrin activation. [provided by RefSeq, May

Synonyms:

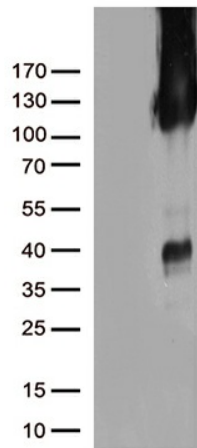
CD31; CD31/EndoCAM; endoCAM; GPIIA'; PECA1; PECAM-1

Protein Families:

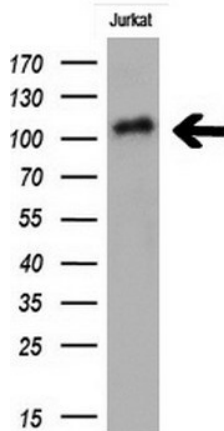
Druggable Genome, ES Cell Differentiation/IPS, Transmembrane

Protein Pathways:

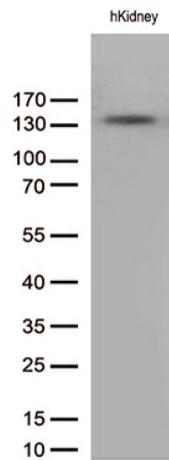
Cell adhesion molecules (CAMs), Leukocyte transendothelial migration

Product images:


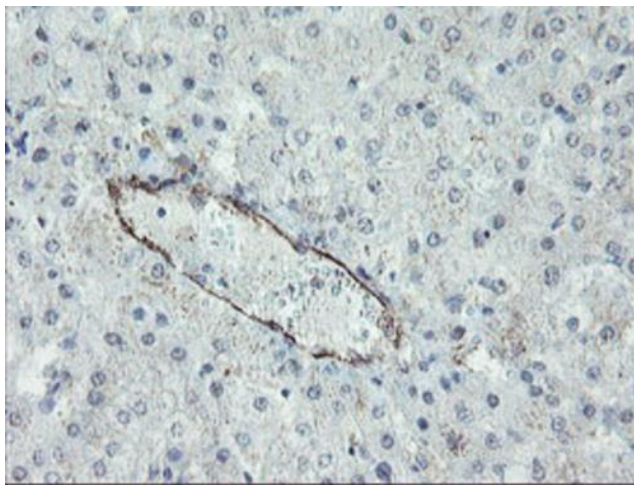
HEK293T cells were transfected with the pCMV6-ENTRY control (Left lane) or pCMV6-ENTRY PECAM1 ([RC208654], Right lane) cDNA for 48 hrs and lysed. Equivalent amounts of cell lysates (5 ug per lane) were separated by SDS-PAGE and immunoblotted with anti-PECAM1. Positive lysates [LY424716] (100ug) and [LC424716] (20ug) can be purchased separately from OriGene.



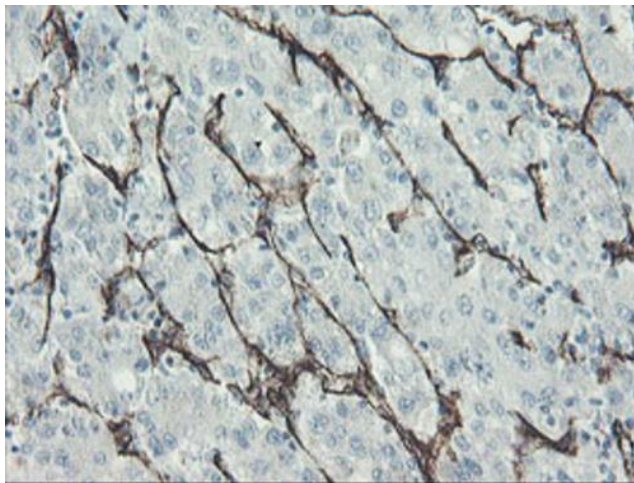
Western blot analysis of extracts (10ug) from 1 cell line by using anti-PECAM1 monoclonal antibody at 1:200.



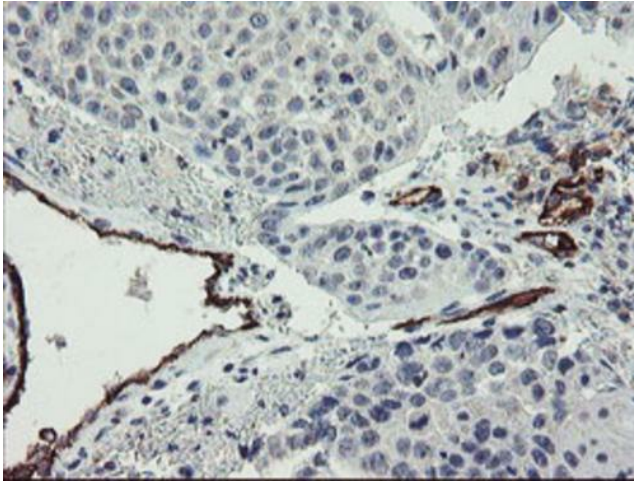
Western blot analysis of extracts (35ug) from human kidney tissue by using anti-PECAM1 monoclonal antibody. 1:500



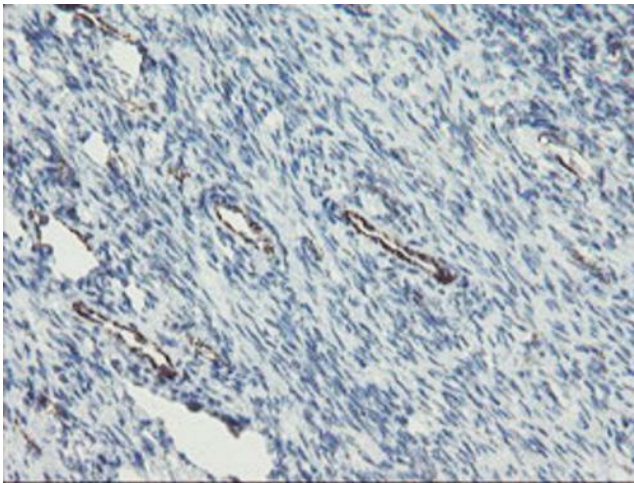
Immunohistochemical staining of paraffin-embedded Human liver tissue within the normal limits using anti-PECAM1 mouse monoclonal antibody. ([TA504862]; heat-induced epitope retrieval by 1mM EDTA in 10mM Tris, pH8.5, 120°C for 3min)



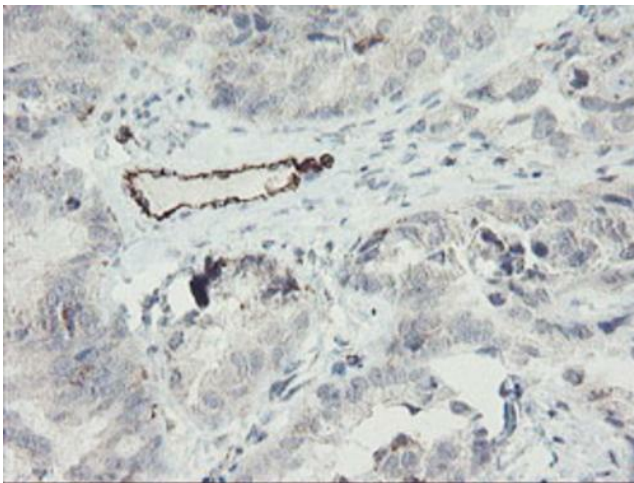
Immunohistochemical staining of paraffin-embedded Carcinoma of Human liver tissue using anti-PECAM1 mouse monoclonal antibody. ([TA504862]; heat-induced epitope retrieval by 1mM EDTA in 10mM Tris, pH8.5, 120°C for 3min)



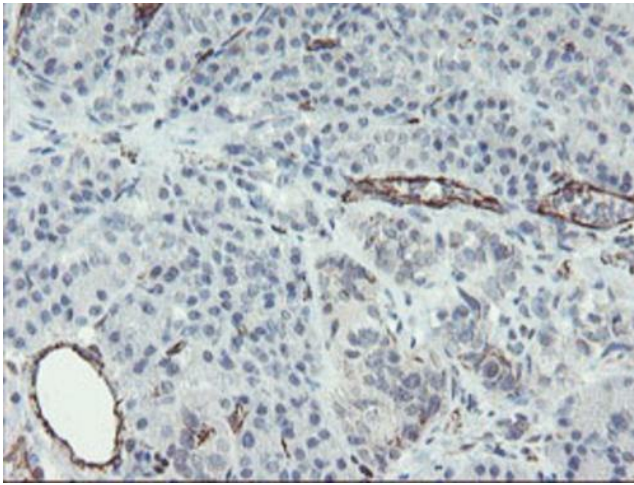
Immunohistochemical staining of paraffin-embedded Carcinoma of Human lung tissue using anti-PECAM1 mouse monoclonal antibody. ([TA504862]; heat-induced epitope retrieval by 1mM EDTA in 10mM Tris, pH8.5, 120°C for 3min)



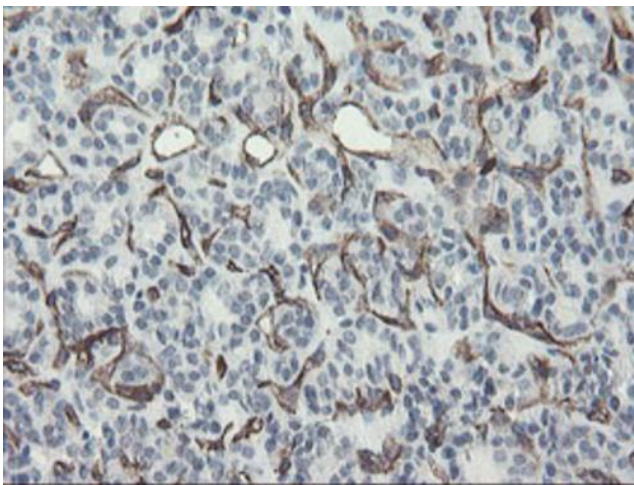
Immunohistochemical staining of paraffin-embedded Human Ovary tissue within the normal limits using anti-PECAM1 mouse monoclonal antibody. ([TA504862]; heat-induced epitope retrieval by 1mM EDTA in 10mM Tris, pH8.5, 120°C for 3min)



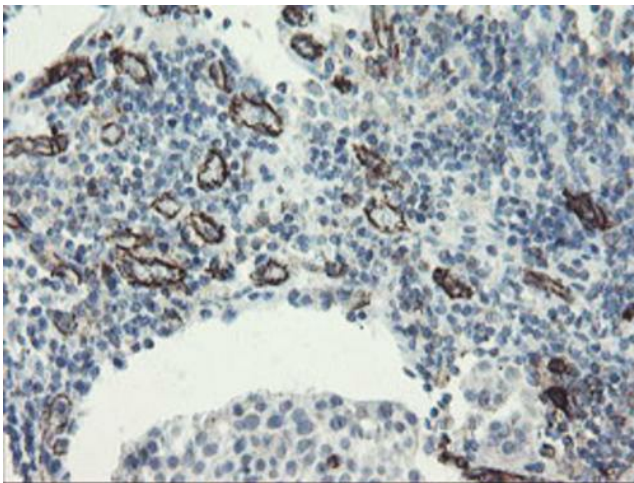
Immunohistochemical staining of paraffin-embedded Adenocarcinoma of Human ovary tissue using anti-PECAM1 mouse monoclonal antibody. ([TA504862]; heat-induced epitope retrieval by 1mM EDTA in 10mM Tris, pH8.5, 120°C for 3min)



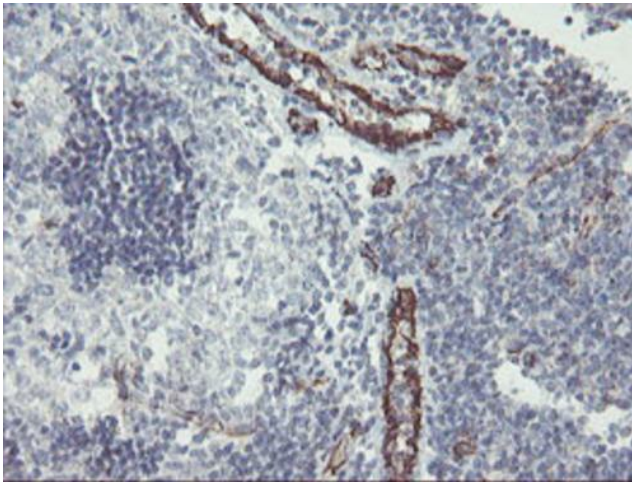
Immunohistochemical staining of paraffin-embedded Human pancreas tissue within the normal limits using anti-PECAM1 mouse monoclonal antibody. ([TA504862]; heat-induced epitope retrieval by 1mM EDTA in 10mM Tris, pH8.5, 120°C for 3min)



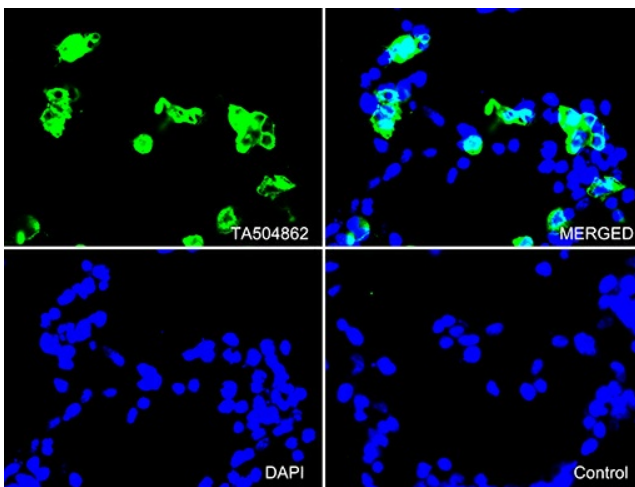
Immunohistochemical staining of paraffin-embedded Carcinoma of Human thyroid tissue using anti-PECAM1 mouse monoclonal antibody. ([TA504862]; heat-induced epitope retrieval by 1mM EDTA in 10mM Tris, pH8.5, 120°C for 3min)



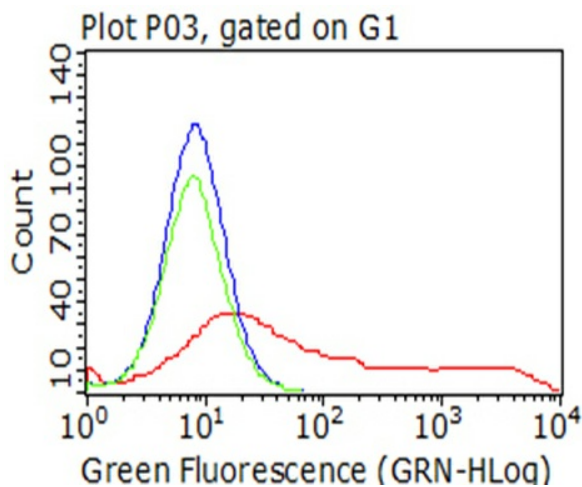
Immunohistochemical staining of paraffin-embedded Carcinoma of Human bladder tissue using anti-PECAM1 mouse monoclonal antibody. ([TA504862]; heat-induced epitope retrieval by 1mM EDTA in 10mM Tris, pH8.5, 120°C for 3min)



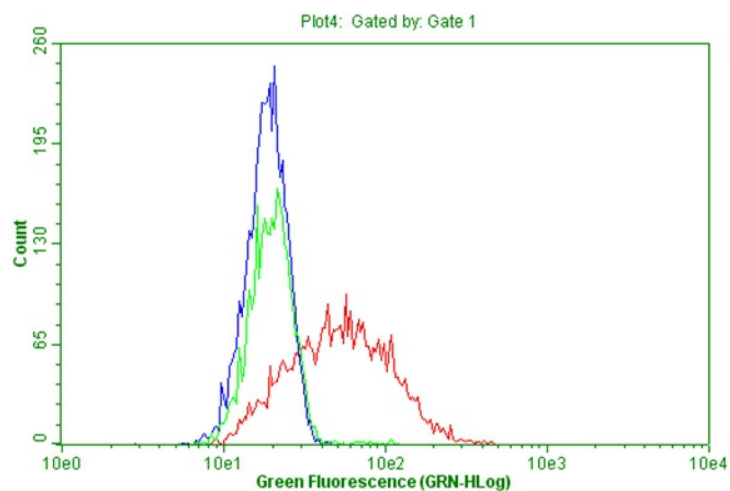
Immunohistochemical staining of paraffin-embedded Human tonsil within the normal limits using anti-PECAM1 mouse monoclonal antibody. ([TA504862]; heat-induced epitope retrieval by 1mM EDTA in 10mM Tris, pH8.5, 120°C for 3min)



Immunofluorescent staining of 293T cells transiently transfected by pCMV6-ENTRY PECAM1 ([RC208654]) using anti-PECAM1 mouse monoclonal antibody ([TA504862], green, upper left; merged, upper right). Cell nuclei were stained with DAPI (blue, lower left). 293T cells transfected with empty vector plasmid served as negative control (merged, lower right) (1:100).



Living HEK293T cells transfected with either [RC208654] plasmid (red) or empty vector (blue) were immunostained by anti-PECAM1 antibody ([TA504862]) or isotype control antibody (green), and then analyzed by flow cytometry (1:100).



Flow cytometric Analysis of living HUVEC cells, using anti-PECAM1 antibody ([TA504862]), (Red), compared to a nonspecific negative control antibody, (green) and PBS (blue).