

Product datasheet for **CF504836**

ACBD3 Mouse Monoclonal Antibody [Clone ID: OTI3A1]

Product data:

Product Type:	Primary Antibodies
Clone Name:	OTI3A1
Applications:	FC, IHC, WB
Recommended Dilution:	WB 1:500~2000, IHC 1:150, FLOW 1:100
Reactivity:	Human, Dog, Rat, Mouse
Host:	Mouse
Isotype:	IgG1
Clonality:	Monoclonal
Immunogen:	Full length human recombinant protein of human ACBD3(NP_073572) produced in HKE293T cell.
Formulation:	Lyophilized powder (original buffer 1X PBS, pH 7.3, 8% trehalose)
Reconstitution Method:	For reconstitution, we recommend adding 100uL distilled water to a final antibody concentration of about 1 mg/mL. To use this carrier-free antibody for conjugation experiment, we strongly recommend performing another round of desalting process. (OriGene recommends Zeba Spin Desalting Columns, 7KMWCO from Thermo Scientific)
Purification:	Purified from mouse ascites fluids or tissue culture supernatant by affinity chromatography (protein A/G)
Conjugation:	Unconjugated
Storage:	Store at -20°C as received.
Stability:	Stable for 12 months from date of receipt.
Predicted Protein Size:	60.4 kDa
Gene Name:	Homo sapiens acyl-CoA binding domain containing 3 (ACBD3), mRNA.
Database Link:	NP_073572 Entrez Gene 170760 MouseEntrez Gene 289312 RatEntrez Gene 611888 DogEntrez Gene 64746 Human Q9H3P7



[View online »](#)

Background:

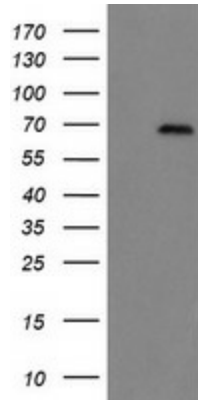
The Golgi complex plays a key role in the sorting and modification of proteins exported from the endoplasmic reticulum. The protein encoded by this gene is involved in the maintenance of Golgi structure and function through its interaction with the integral membrane protein giantin. It may also be involved in the hormonal regulation of steroid formation. [provided by RefSeq, Jul

Synonyms:

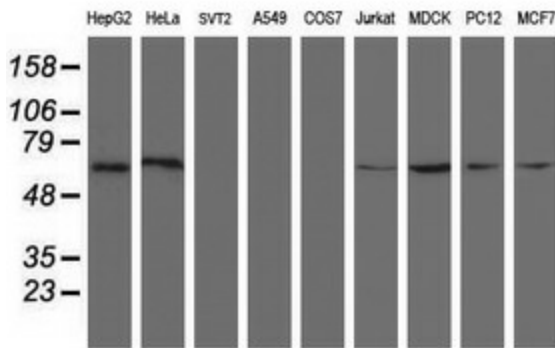
GCP60; GOCAP1; GOLPH1; PAP7

Protein Families:

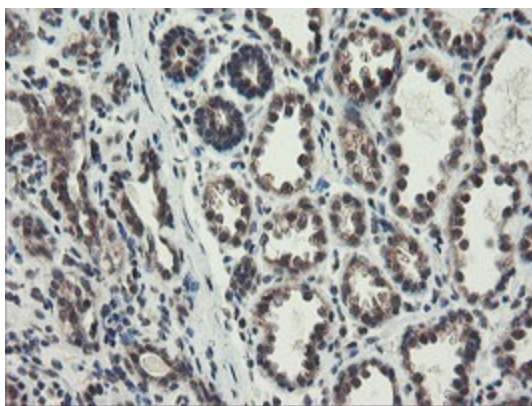
Druggable Genome

Product images:


HEK293T cells were transfected with the pCMV6-ENTRY control (Left lane) or pCMV6-ENTRY ACBD3 ([RC208434], Right lane) cDNA for 48 hrs and lysed. Equivalent amounts of cell lysates (5 ug per lane) were separated by SDS-PAGE and immunoblotted with anti-ACBD3. Positive lysates [LY411600] (100ug) and [LC411600] (20ug) can be purchased separately from OriGene.



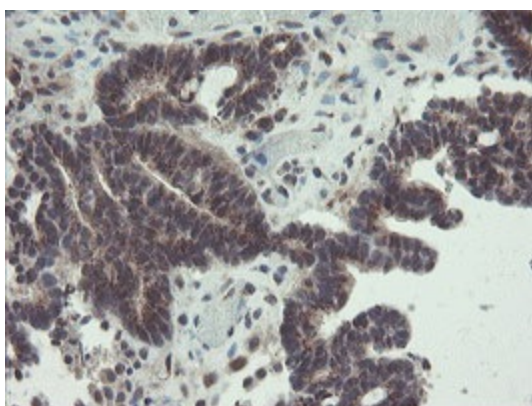
Western blot analysis of extracts (35ug) from 9 different cell lines by using anti-ACBD3 monoclonal antibody (HepG2: human; HeLa: human; SVT2: mouse; A549: human; COS7: monkey; Jurkat: human; MDCK: canine; PC12: rat; MCF7: human).



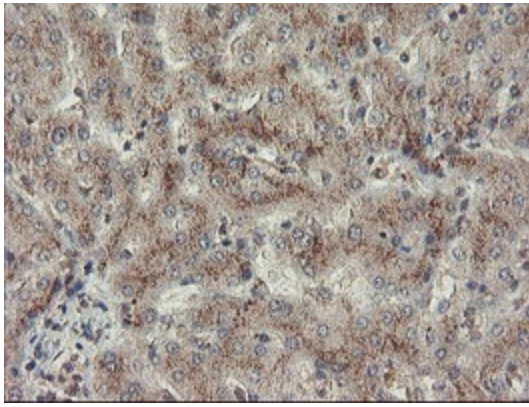
Immunohistochemical staining of paraffin-embedded Human breast tissue within the normal limits using anti-ACBD3 mouse monoclonal antibody. (Heat-induced epitope retrieval by 10mM citric buffer, pH6.0, 100°C for 10min, [TA504836])



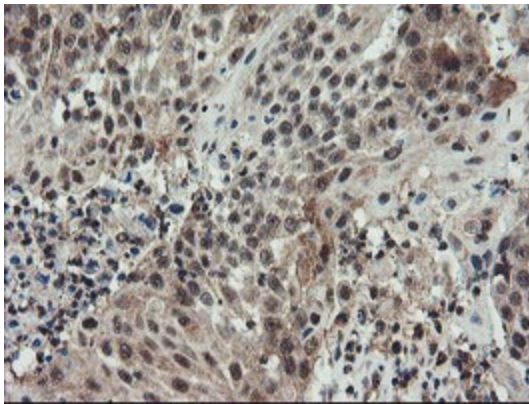
Immunohistochemical staining of paraffin-embedded Human colon tissue within the normal limits using anti-ACBD3 mouse monoclonal antibody. (Heat-induced epitope retrieval by 10mM citric buffer, pH6.0, 100°C for 10min, [TA504836])



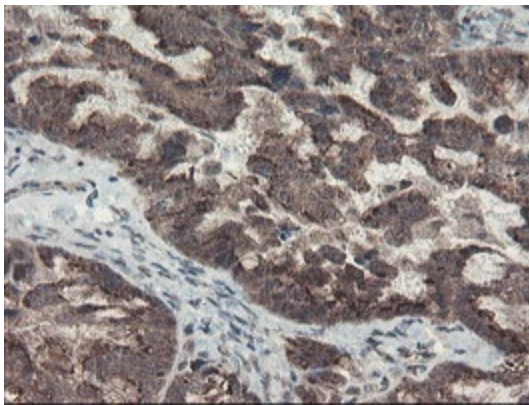
Immunohistochemical staining of paraffin-embedded Adenocarcinoma of Human colon tissue using anti-ACBD3 mouse monoclonal antibody. (Heat-induced epitope retrieval by 10mM citric buffer, pH6.0, 100°C for 10min, [TA504836])



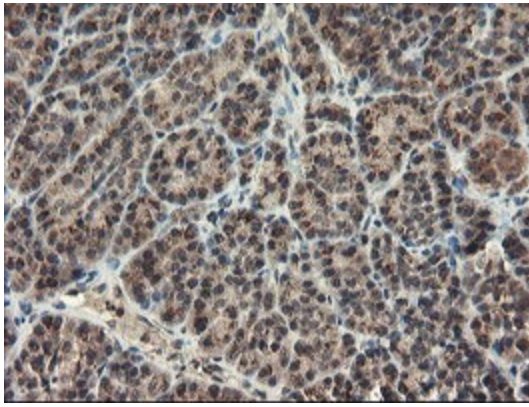
Immunohistochemical staining of paraffin-embedded Human liver tissue within the normal limits using anti-ACBD3 mouse monoclonal antibody. (Heat-induced epitope retrieval by 10mM citric buffer, pH6.0, 100°C for 10min, [TA504836])



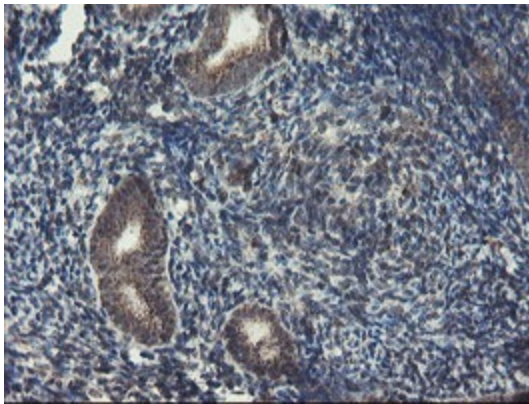
Immunohistochemical staining of paraffin-embedded Carcinoma of Human lung tissue using anti-ACBD3 mouse monoclonal antibody. (Heat-induced epitope retrieval by 10mM citric buffer, pH6.0, 100°C for 10min, [TA504836])



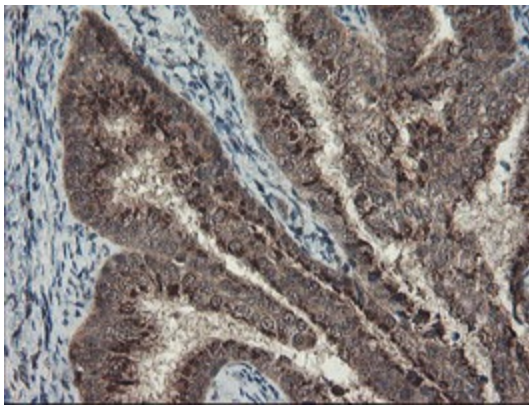
Immunohistochemical staining of paraffin-embedded Adenocarcinoma of Human ovary tissue using anti-ACBD3 mouse monoclonal antibody. (Heat-induced epitope retrieval by 10mM citric buffer, pH6.0, 100°C for 10min, [TA504836])



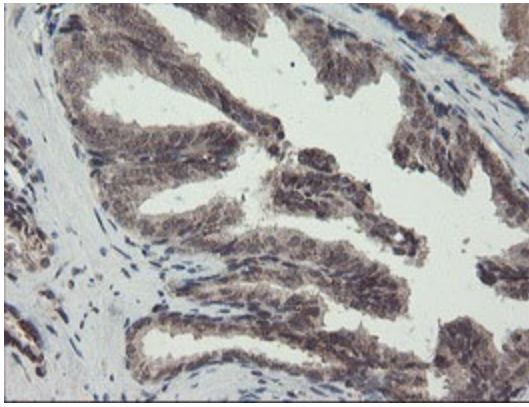
Immunohistochemical staining of paraffin-embedded Human pancreas tissue within the normal limits using anti-ACBD3 mouse monoclonal antibody. (Heat-induced epitope retrieval by 10mM citric buffer, pH6.0, 100°C for 10min, [TA504836])



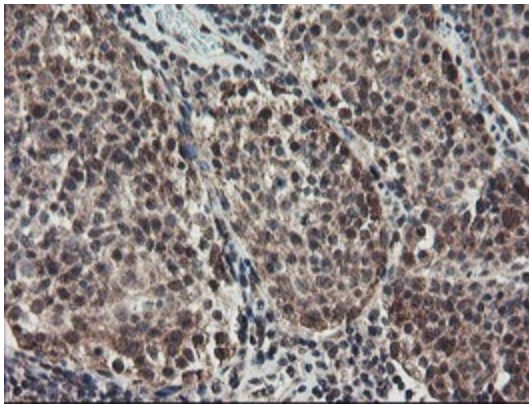
Immunohistochemical staining of paraffin-embedded Human endometrium tissue within the normal limits using anti-ACBD3 mouse monoclonal antibody. (Heat-induced epitope retrieval by 10mM citric buffer, pH6.0, 100°C for 10min, [TA504836])



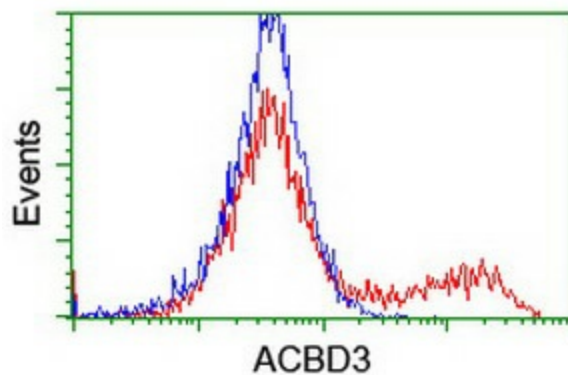
Immunohistochemical staining of paraffin-embedded Adenocarcinoma of Human endometrium tissue using anti-ACBD3 mouse monoclonal antibody. (Heat-induced epitope retrieval by 10mM citric buffer, pH6.0, 100°C for 10min, [TA504836])



Immunohistochemical staining of paraffin-embedded Human prostate tissue within the normal limits using anti-ACBD3 mouse monoclonal antibody. (Heat-induced epitope retrieval by 10mM citric buffer, pH6.0, 100°C for 10min, [TA504836])



Immunohistochemical staining of paraffin-embedded Carcinoma of Human bladder tissue using anti-ACBD3 mouse monoclonal antibody. (Heat-induced epitope retrieval by 10mM citric buffer, pH6.0, 100°C for 10min, [TA504836])



HEK293T cells transfected with either [RC208434] overexpress plasmid (Red) or empty vector control plasmid (Blue) were immunostained by anti-ACBD3 antibody ([TA504836]), and then analyzed by flow cytometry.