

## Product datasheet for **CF504817**

### SENP2 Mouse Monoclonal Antibody [Clone ID: OTI1H2]

#### Product data:

Product Type:	Primary Antibodies
Clone Name:	OTI1H2
Applications:	FC, IF, IHC, WB
Recommended Dilution:	WB 1:2000, IHC 1:150, IF 1:100, FLOW 1:100
Reactivity:	Human, Mouse, Rat
Host:	Mouse
Isotype:	IgG1
Clonality:	Monoclonal
Immunogen:	Human recombinant protein fragment corresponding to amino acids 139-523 of human SENP2(NP_067640) produced in E.coli.
Formulation:	Lyophilized powder (original buffer 1X PBS, pH 7.3, 8% trehalose)
Reconstitution Method:	For reconstitution, we recommend adding 100uL distilled water to a final antibody concentration of about 1 mg/mL. To use this carrier-free antibody for conjugation experiment, we strongly recommend performing another round of desalting process. (OriGene recommends Zeba Spin Desalting Columns, 7KMWCO from Thermo Scientific)
Purification:	Purified from mouse ascites fluids or tissue culture supernatant by affinity chromatography (protein A/G)
Conjugation:	Unconjugated
Storage:	Store at -20°C as received.
Stability:	Stable for 12 months from date of receipt.
Gene Name:	Homo sapiens SUMO specific peptidase 2 (SENP2), mRNA.
Database Link:	<a href="#">NP_067640</a> <a href="#">Entrez Gene 75826 Mouse</a> <a href="#">Entrez Gene 78973 Rat</a> <a href="#">Entrez Gene 59343 Human</a> <a href="#">Q9HC62</a>
Background:	SUMO1 (UBL1; MIM 601912) is a small ubiquitin-like protein that can be covalently conjugated to other proteins. SENP2 is one of a group of enzymes that process newly synthesized SUMO1 into the conjugatable form and catalyze the deconjugation of SUMO1-containing species. [supplied by OMIM]. COMPLETENESS: complete on the 3' end.



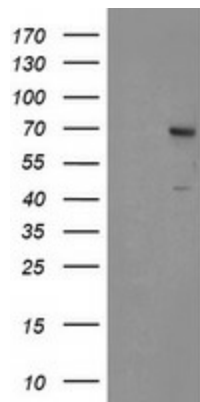
[View online »](#)

**Synonyms:** AXAM2; SMT3IP2

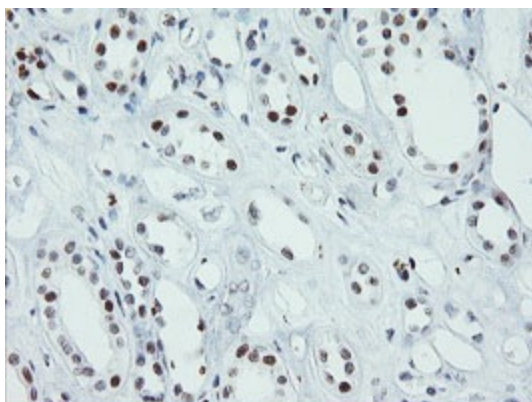
**Protein Families:** Druggable Genome, Protease

**Protein Pathways:** Wnt signaling pathway

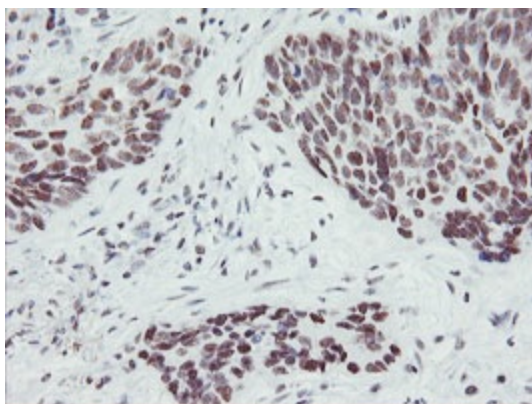
### Product images:



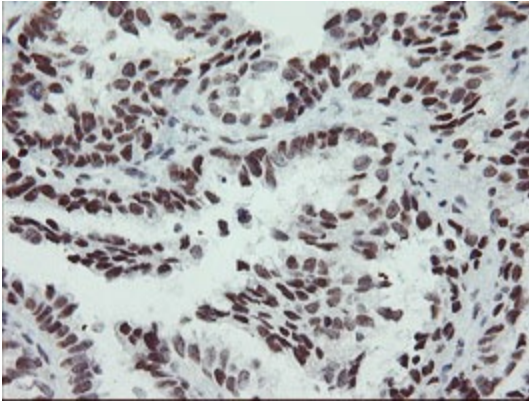
HEK293T cells were transfected with the pCMV6-ENTRY control (Cat# [PS100001], Left lane) or pCMV6-ENTRY SENP2 (Cat# [RC208109], Right lane) cDNA for 48 hrs and lysed. Equivalent amounts of cell lysates (5 ug per lane) were separated by SDS-PAGE and immunoblotted with anti-SENP2(Cat# [TA504817]).



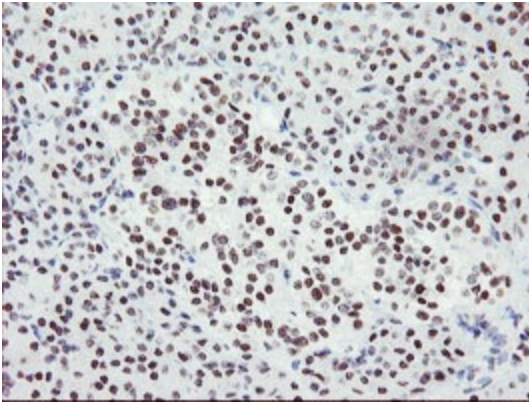
Immunohistochemical staining of paraffin-embedded Human Kidney tissue within the normal limits using anti-SENP2 mouse monoclonal antibody. (Heat-induced epitope retrieval by 10mM citric buffer, pH6.0, 100°C for 10min, [TA504817])



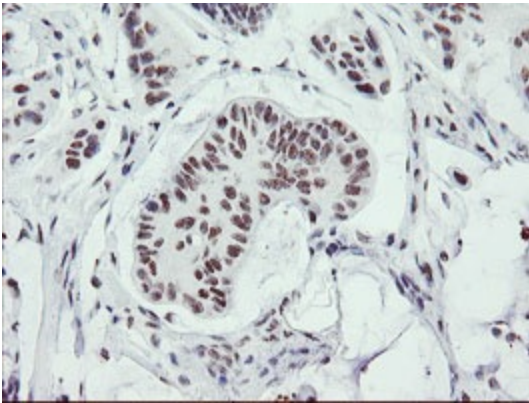
Immunohistochemical staining of paraffin-embedded Carcinoma of Human lung tissue using anti-SENP2 mouse monoclonal antibody. (Heat-induced epitope retrieval by 10mM citric buffer, pH6.0, 100°C for 10min, [TA504817])



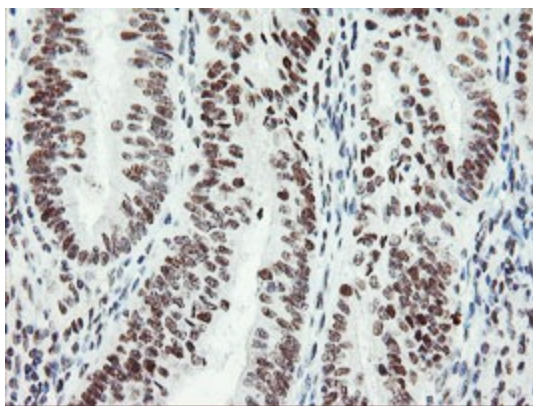
Immunohistochemical staining of paraffin-embedded Adenocarcinoma of Human ovary tissue using anti-SENP2 mouse monoclonal antibody. (Heat-induced epitope retrieval by 10mM citric buffer, pH6.0, 100°C for 10min, [TA504817])



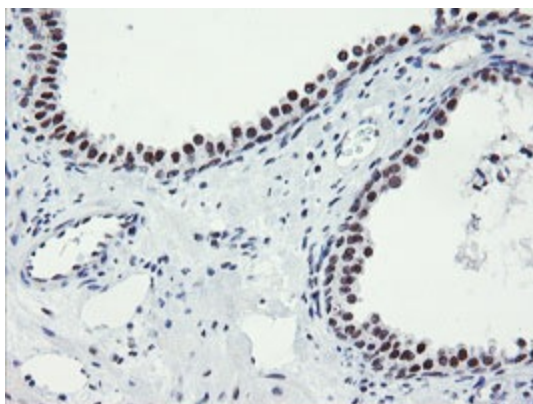
Immunohistochemical staining of paraffin-embedded Human pancreas tissue within the normal limits using anti-SENP2 mouse monoclonal antibody. (Heat-induced epitope retrieval by 10mM citric buffer, pH6.0, 100°C for 10min, [TA504817])



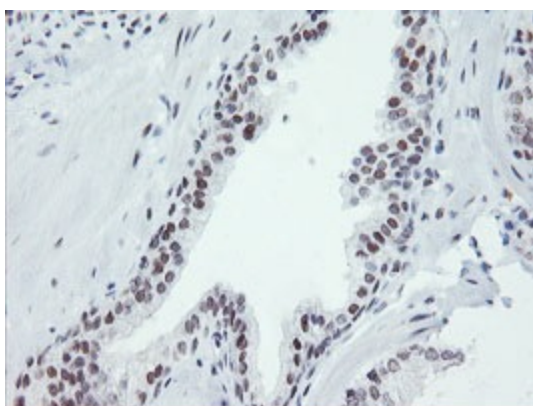
Immunohistochemical staining of paraffin-embedded Carcinoma of Human pancreas tissue using anti-SENP2 mouse monoclonal antibody. (Heat-induced epitope retrieval by 10mM citric buffer, pH6.0, 100°C for 10min, [TA504817])



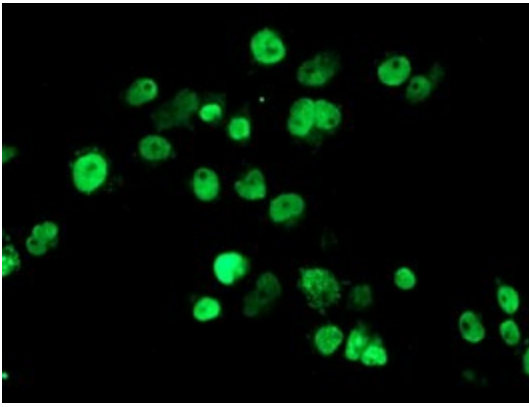
Immunohistochemical staining of paraffin-embedded Adenocarcinoma of Human endometrium tissue using anti-SENP2 mouse monoclonal antibody. (Heat-induced epitope retrieval by 10mM citric buffer, pH6.0, 100°C for 10min, [TA504817])



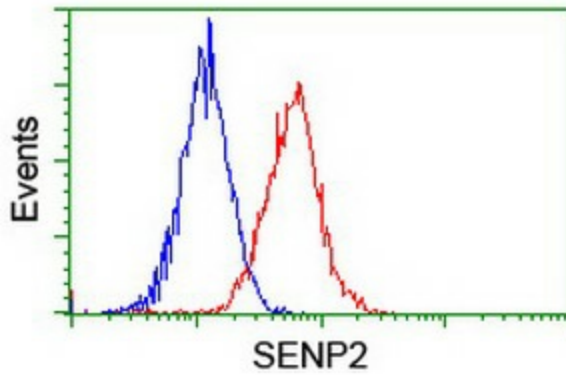
Immunohistochemical staining of paraffin-embedded Human prostate tissue within the normal limits using anti-SENP2 mouse monoclonal antibody. (Heat-induced epitope retrieval by 10mM citric buffer, pH6.0, 100°C for 10min, [TA504817])



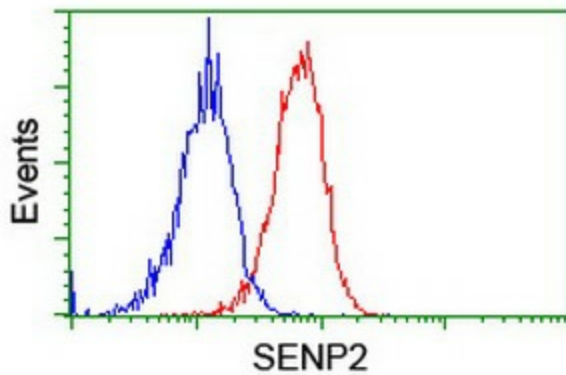
Immunohistochemical staining of paraffin-embedded Carcinoma of Human prostate tissue using anti-SENP2 mouse monoclonal antibody. (Heat-induced epitope retrieval by 10mM citric buffer, pH6.0, 100°C for 10min, [TA504817])



Anti-SEN2 mouse monoclonal antibody ([TA504817]) immunofluorescent staining of COS7 cells transiently transfected by pCMV6-ENTRY SEN2 ([RC208109]).



Flow cytometric Analysis of HeLa cells, using anti-SEN2 antibody ([TA504817]), (Red), compared to a nonspecific negative control antibody, (Blue).



Flow cytometric Analysis of Jurkat cells, using anti-SEN2 antibody ([TA504817]), (Red), compared to a nonspecific negative control antibody, (Blue).