

## Product datasheet for **CF504813**

### **PADI4 Mouse Monoclonal Antibody [Clone ID: OTI4H5]**

#### **Product data:**

|                                |  |
|--------------------------------|--|
| <b>Product Type:</b>           | Primary Antibodies   |
| <b>Clone Name:</b>             | OTI4H5   |
| <b>Applications:</b>           | FC, IF, IHC, WB  |
| <b>Recommended Dilution:</b>   | WB 1:2000, IHC 1:150, IF 1:100, FLOW 1:100   |
| <b>Reactivity:</b>             | Human  |
| <b>Host:</b>                   | Mouse  |
| <b>Isotype:</b>                | IgG2a  |
| <b>Clonality:</b>              | Monoclonal   |
| <b>Immunogen:</b>              | Full length human recombinant protein of human PADI4(NP_036519) produced in HEK293T cell.  |
| <b>Formulation:</b>            | Lyophilized powder (original buffer 1X PBS, pH 7.3, 8% trehalose)  |
| <b>Reconstitution Method:</b>  | For reconstitution, we recommend adding 100uL distilled water to a final antibody concentration of about 1 mg/mL. To use this carrier-free antibody for conjugation experiment, we strongly recommend performing another round of desalting process. (OriGene recommends Zeba Spin Desalting Columns, 7KMWCO from Thermo Scientific) |
| <b>Purification:</b>           | Purified from mouse ascites fluids or tissue culture supernatant by affinity chromatography (protein A/G)  |
| <b>Conjugation:</b>            | Unconjugated   |
| <b>Storage:</b>                | Store at -20°C as received.  |
| <b>Stability:</b>              | Stable for 12 months from date of receipt.   |
| <b>Predicted Protein Size:</b> | 73.9 kDa   |
| <b>Gene Name:</b>              | Homo sapiens peptidyl arginine deiminase 4 (PADI4), mRNA.  |
| <b>Database Link:</b>          | <a href="#">NP_036519</a><br><a href="#">Entrez Gene 23569 Human</a><br><a href="#">Q9UM07</a>   |



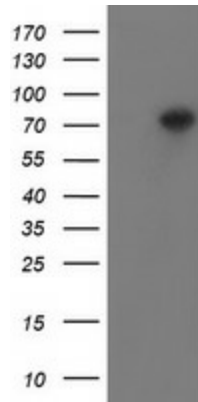
[View online »](#)

**Background:**

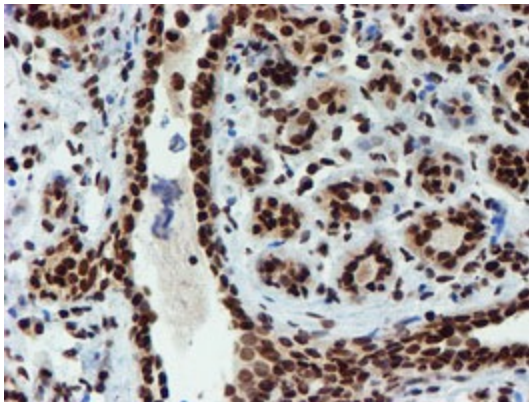
This gene is a member of a gene family which encodes enzymes responsible for the conversion of arginine residues to citrulline residues. This gene may play a role in granulocyte and macrophage development leading to inflammation and immune response. [provided by RefSeq]

**Synonyms:**

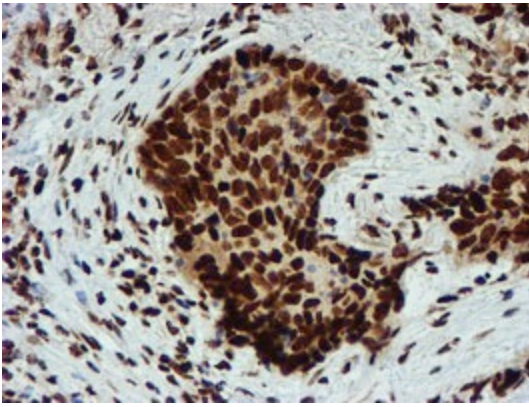
PAD; PAD4; PADI5; PDI4; PDI5

**Product images:**

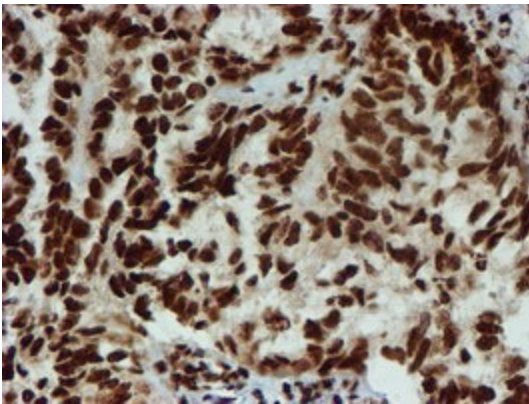
HEK293T cells were transfected with the pCMV6-ENTRY control (Cat# [PS100001], Left lane) or pCMV6-ENTRY PADI4 (Cat# [RC206501], Right lane) cDNA for 48 hrs and lysed. Equivalent amounts of cell lysates (5 ug per lane) were separated by SDS-PAGE and immunoblotted with anti-PADI4 (Cat# [TA504813]). Positive lysates [LY402202] (100ug) and [LC402202] (20ug) can be purchased separately from OriGene.



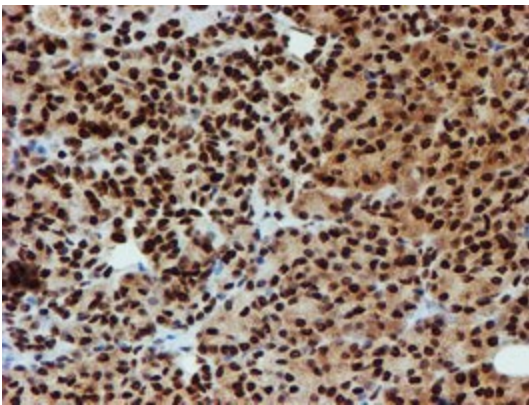
Immunohistochemical staining of paraffin-embedded Human breast tissue within the normal limits using anti-PADI4 mouse monoclonal antibody. (Heat-induced epitope retrieval by 10mM citric buffer, pH6.0, 100°C for 10min, [TA504813]).



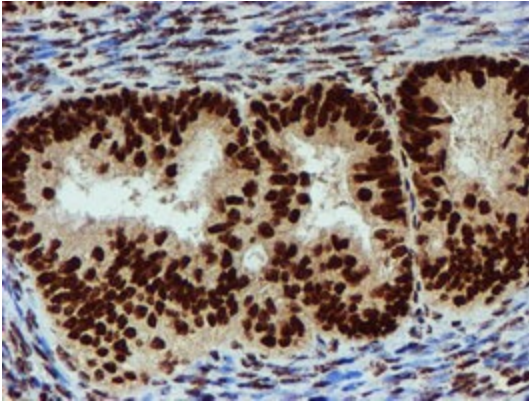
Immunohistochemical staining of paraffin-embedded Carcinoma of Human lung tissue using anti-PADI4 mouse monoclonal antibody. (Heat-induced epitope retrieval by 10mM citric buffer, pH6.0, 100°C for 10min, [TA504813]).



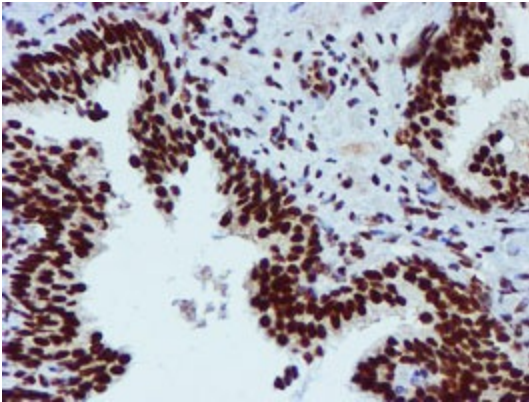
Immunohistochemical staining of paraffin-embedded Adenocarcinoma of Human ovary tissue using anti-PADI4 mouse monoclonal antibody. (Heat-induced epitope retrieval by 10mM citric buffer, pH6.0, 100°C for 10min, [TA504813]).



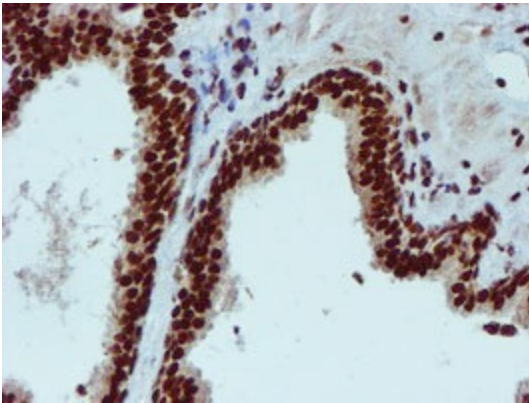
Immunohistochemical staining of paraffin-embedded Human pancreas tissue within the normal limits using anti-PADI4 mouse monoclonal antibody. (Heat-induced epitope retrieval by 10mM citric buffer, pH6.0, 100°C for 10min, [TA504813]).



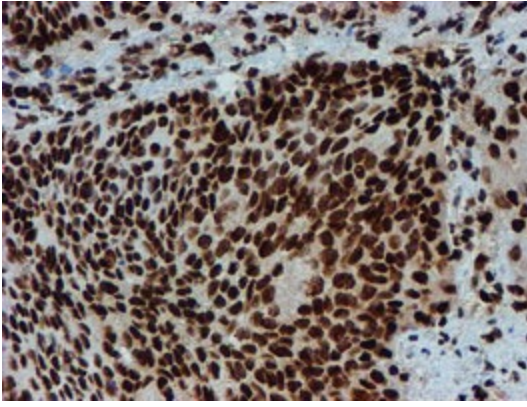
Immunohistochemical staining of paraffin-embedded Adenocarcinoma of Human endometrium tissue using anti-PADI4 mouse monoclonal antibody. (Heat-induced epitope retrieval by 10mM citric buffer, pH6.0, 100°C for 10min, [TA504813]).



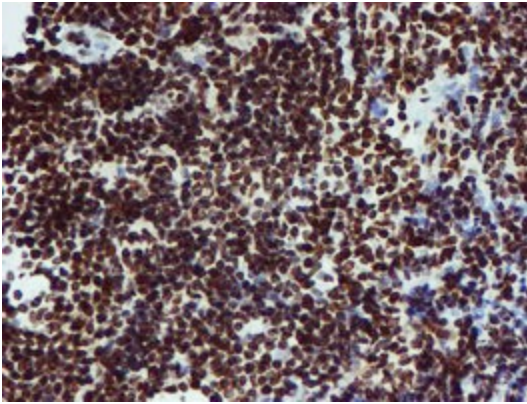
Immunohistochemical staining of paraffin-embedded Human prostate tissue within the normal limits using anti-PADI4 mouse monoclonal antibody. (Heat-induced epitope retrieval by 10mM citric buffer, pH6.0, 100°C for 10min, [TA504813]).



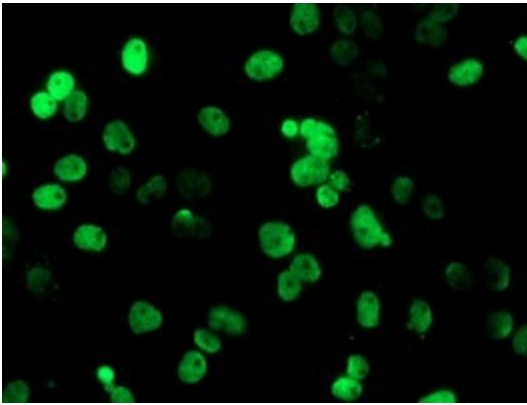
Immunohistochemical staining of paraffin-embedded Carcinoma of Human prostate tissue using anti-PADI4 mouse monoclonal antibody. (Heat-induced epitope retrieval by 10mM citric buffer, pH6.0, 100°C for 10min, [TA504813]).



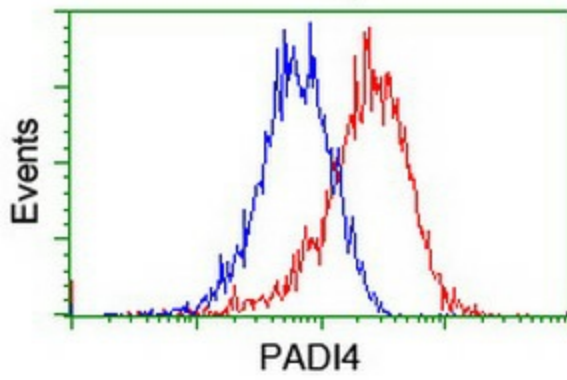
Immunohistochemical staining of paraffin-embedded Carcinoma of Human bladder tissue using anti-PADI4 mouse monoclonal antibody. (Heat-induced epitope retrieval by 10mM citric buffer, pH6.0, 100°C for 10min, [TA504813]).



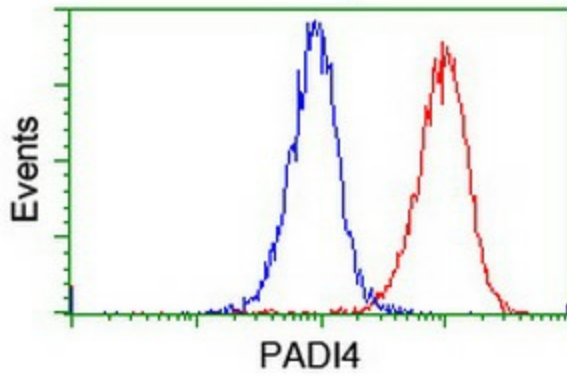
Immunohistochemical staining of paraffin-embedded Human lymphoma tissue using anti-PADI4 mouse monoclonal antibody. (Heat-induced epitope retrieval by 10mM citric buffer, pH6.0, 100°C for 10min, [TA504813]).



Anti-PADI4 mouse monoclonal antibody ([TA504813]) immunofluorescent staining of COS7 cells transiently transfected by pCMV6-ENTRY PADI4 ([RC206501]).



Flow cytometric Analysis of HeLa cells, using anti-PADI4 antibody ([TA504813]), (Red), compared to a nonspecific negative control antibody, (Blue).



Flow cytometric Analysis of Jurkat cells, using anti-PADI4 antibody ([TA504813]), (Red), compared to a nonspecific negative control antibody, (Blue).