

Product datasheet for **CF504794**

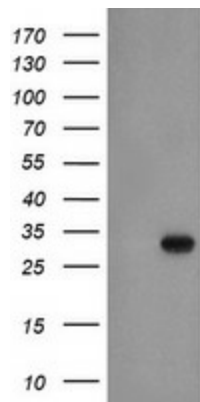
EXOSC3 Mouse Monoclonal Antibody [Clone ID: OTI1D6]

Product data:

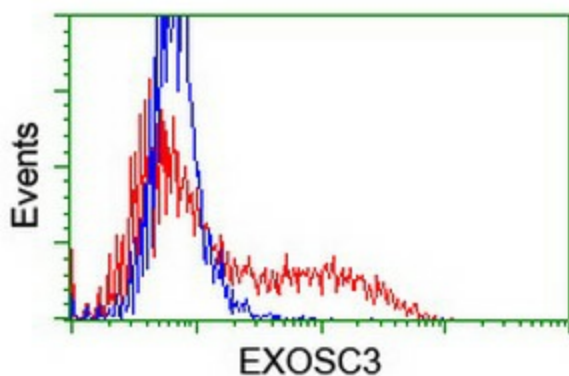
Product Type:	Primary Antibodies
Clone Name:	OTI1D6
Applications:	FC, WB
Recommended Dilution:	WB 1:2000, FLOW 1:100
Reactivity:	Human, Mouse, Rat
Host:	Mouse
Isotype:	IgG1
Clonality:	Monoclonal
Immunogen:	Full length human recombinant protein of human EXOSC3(NP_057126) produced in E.coli.
Formulation:	Lyophilized powder (original buffer 1X PBS, pH 7.3, 8% trehalose)
Reconstitution Method:	For reconstitution, we recommend adding 100uL distilled water to a final antibody concentration of about 1 mg/mL. To use this carrier-free antibody for conjugation experiment, we strongly recommend performing another round of desalting process. (OriGene recommends Zeba Spin Desalting Columns, 7KMWCO from Thermo Scientific)
Purification:	Purified from mouse ascites fluids or tissue culture supernatant by affinity chromatography (protein A/G)
Conjugation:	Unconjugated
Storage:	Store at -20°C as received.
Stability:	Stable for 12 months from date of receipt.
Predicted Protein Size:	29.4 kDa
Gene Name:	exosome component 3
Database Link:	NP_057126 Entrez Gene 66362 MouseEntrez Gene 313243 RatEntrez Gene 51010 Human Q9NQ5
Synonyms:	bA3J10.7; CGI-102; hRrp-40; p10; PCH1B; RRP40; Rrp40p
Protein Families:	Stem cell - Pluripotency
Protein Pathways:	RNA degradation



[View online »](#)

Product images:

HEK293T cells were transfected with the pCMV6-ENTRY control (Cat# [PS100001], Left lane) or pCMV6-ENTRY EXOSC3 (Cat# [RC200035], Right lane) cDNA for 48 hrs and lysed. Equivalent amounts of cell lysates (5 ug per lane) were separated by SDS-PAGE and immunoblotted with anti-EXOSC3 (Cat# [TA504794]). Positive lysates [LY414229] (100ug) and [LC414229] (20ug) can be purchased separately from OriGene.



HEK293T cells transfected with either [RC200035] overexpress plasmid (Red) or empty vector control plasmid (Blue) were immunostained by anti-EXOSC3 antibody ([TA504794]), and then analyzed by flow cytometry.