

Product datasheet for **CF504730**

TDO2 Mouse Monoclonal Antibody [Clone ID: OTI4G2]

Product data:

| | |
|-------------------------|--|
| Product Type: | Primary Antibodies |
| Clone Name: | OTI4G2 |
| Applications: | IHC, WB |
| Recommended Dilution: | WB 1:2000, IHC 1:150 |
| Reactivity: | Human, Mouse, Rat |
| Host: | Mouse |
| Isotype: | IgG2a |
| Clonality: | Monoclonal |
| Immunogen: | Full length human recombinant protein of human TDO2(NP_005642) produced in HEK293T cell. |
| Formulation: | Lyophilized powder (original buffer 1X PBS, pH 7.3, 8% trehalose) |
| Reconstitution Method: | For reconstitution, we recommend adding 100uL distilled water to a final antibody concentration of about 1 mg/mL. To use this carrier-free antibody for conjugation experiment, we strongly recommend performing another round of desalting process. (OriGene recommends Zeba Spin Desalting Columns, 7KMWCO from Thermo Scientific) |
| Purification: | Purified from mouse ascites fluids or tissue culture supernatant by affinity chromatography (protein A/G) |
| Conjugation: | Unconjugated |
| Storage: | Store at -20°C as received. |
| Stability: | Stable for 12 months from date of receipt. |
| Predicted Protein Size: | 47.7 kDa |
| Gene Name: | tryptophan 2,3-dioxygenase |
| Database Link: | NP_005642 Entrez Gene 56720 Mouse Entrez Gene 64206 Rat Entrez Gene 6999 Human P48775 |
| Background: | Tryptophan 2,3-dioxygenase (EC 1.13.11.11) plays a role in catalyzing the first and rat-limiting step in the kynurenine pathway, the major pathway of tryptophan metabolism. [supplied by OMIM] |

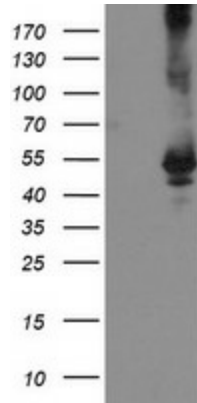


[View online >](#)

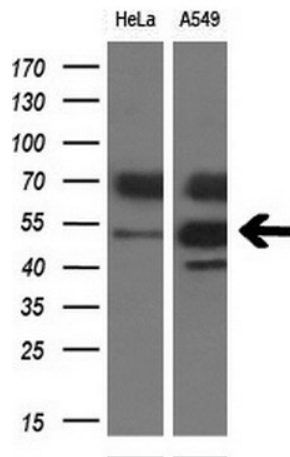
Synonyms: TDO; TO; TPH2; TRPO

Protein Pathways: Metabolic pathways, Tryptophan metabolism

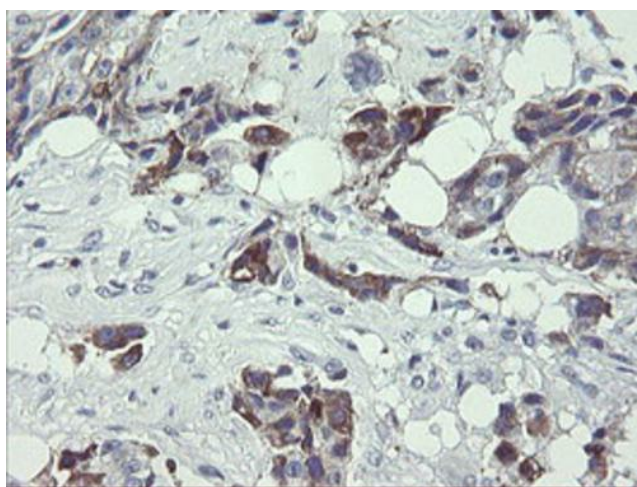
Product images:



HEK293T cells were transfected with the pCMV6-ENTRY control (Left lane) or pCMV6-ENTRY TDO2 ([RC202777], Right lane) cDNA for 48 hrs and lysed. Equivalent amounts of cell lysates (5 ug per lane) were separated by SDS-PAGE and immunoblotted with anti-TDO2. Positive lysates [LY401726] (100ug) and [LC401726] (20ug) can be purchased separately from OriGene.



Western blot analysis of extracts (10ug) from 2 different cell lines by using anti-TDO2 monoclonal antibody at 1:200 dilution.



Immunohistochemical staining of paraffin-embedded Adenocarcinoma of Human breast tissue using anti-TDO2 mouse monoclonal antibody. (Heat-induced epitope retrieval by 10mM citric buffer, pH6.0, 100°C for 10min, [TA504730])