

Product datasheet for **CF504728**

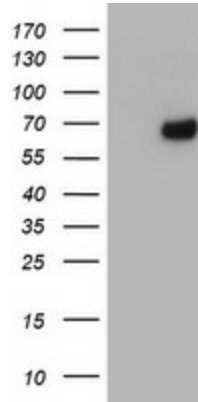
METT10D (METTL16) Mouse Monoclonal Antibody [Clone ID: OTI1A2]

Product data:

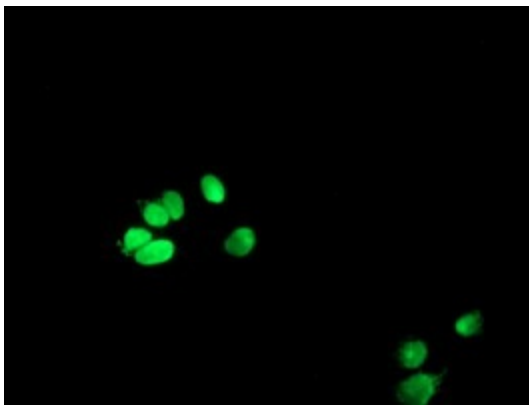
Product Type:	Primary Antibodies
Clone Name:	OTI1A2
Applications:	FC, IF, WB
Recommended Dilution:	WB 1:1000, IF 1:100, FLOW 1:100
Reactivity:	Human, Mouse
Host:	Mouse
Isotype:	IgG1
Clonality:	Monoclonal
Immunogen:	Full length human recombinant protein of human METT10D(NP_076991) produced in HEK293T cell.
Formulation:	Lyophilized powder (original buffer 1X PBS, pH 7.3, 8% trehalose)
Reconstitution Method:	For reconstitution, we recommend adding 100uL distilled water to a final antibody concentration of about 1 mg/mL. To use this carrier-free antibody for conjugation experiment, we strongly recommend performing another round of desalting process. (OriGene recommends Zeba Spin Desalting Columns, 7KMWCO from Thermo Scientific)
Purification:	Purified from mouse ascites fluids or tissue culture supernatant by affinity chromatography (protein A/G)
Conjugation:	Unconjugated
Storage:	Store at -20°C as received.
Stability:	Stable for 12 months from date of receipt.
Predicted Protein Size:	63.4 kDa
Gene Name:	methyltransferase 16, N6-methyladenosine
Database Link:	NP_076991 Entrez Gene 67493 Mouse Entrez Gene 79066 Human Q86W50
Synonyms:	METT10D



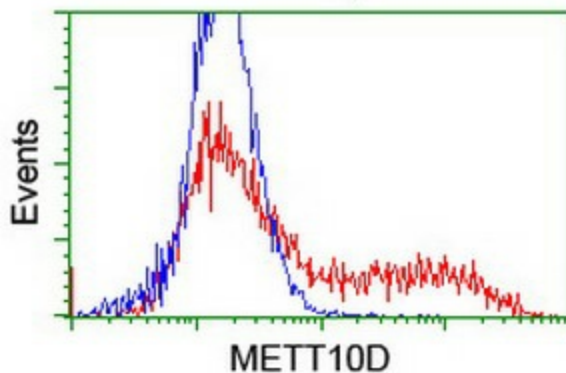
[View online »](#)

Product images:


HEK293T cells were transfected with the pCMV6-ENTRY control (Left lane) or pCMV6-ENTRY METT10D ([RC208648], Right lane) cDNA for 48 hrs and lysed. Equivalent amounts of cell lysates (5 ug per lane) were separated by SDS-PAGE and immunoblotted with anti-METT10D. Positive lysates [LY411358] (100ug) and [LC411358] (20ug) can be purchased separately from OriGene.



Anti-METT10D mouse monoclonal antibody ([TA504728]) immunofluorescent staining of COS7 cells transiently transfected by pCMV6-ENTRY METT10D ([RC208648]).



HEK293T cells transfected with either [RC208648] overexpress plasmid (Red) or empty vector control plasmid (Blue) were immunostained by anti-METT10D antibody ([TA504728]), and then analyzed by flow cytometry.