

Product datasheet for **CF504667**

SCFD1 Mouse Monoclonal Antibody [Clone ID: OT11E2]

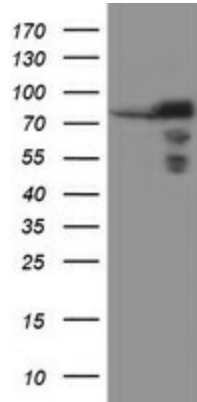
Product data:

Product Type:	Primary Antibodies
Clone Name:	OT11E2
Applications:	WB
Recommended Dilution:	WB 1:500~2000
Reactivity:	Human, Dog, Rat, Monkey, Mouse
Host:	Mouse
Isotype:	IgG1
Clonality:	Monoclonal
Immunogen:	Full length human recombinant protein of human SCFD1(NP_057190) produced in HEK293T cell.
Formulation:	Lyophilized powder (original buffer 1X PBS, pH 7.3, 8% trehalose)
Reconstitution Method:	For reconstitution, we recommend adding 100uL distilled water to a final antibody concentration of about 1 mg/mL. To use this carrier-free antibody for conjugation experiment, we strongly recommend performing another round of desalting process. (OriGene recommends Zeba Spin Desalting Columns, 7KMWCO from Thermo Scientific)
Purification:	Purified from mouse ascites fluids or tissue culture supernatant by affinity chromatography (protein A/G)
Conjugation:	Unconjugated
Storage:	Store at -20°C as received.
Stability:	Stable for 12 months from date of receipt.
Gene Name:	sec1 family domain containing 1
Database Link:	NP_057190 Entrez Gene 54350 Rat Entrez Gene 76983 Mouse Entrez Gene 480281 Dog Entrez Gene 716756 Monkey Entrez Gene 23256 Human Q8WVM8
Synonyms:	C14orf163; RA410; SLY1; SLY1P; STXBP1L2

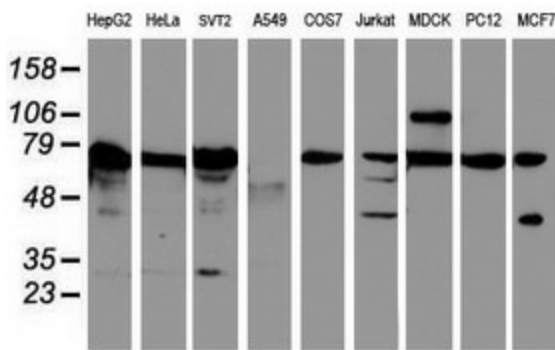


[View online »](#)

Product images:



HEK293T cells were transfected with the pCMV6-ENTRY control (Left lane) or pCMV6-ENTRY SCFD1 ([RC217990], Right lane) cDNA for 48 hrs and lysed. Equivalent amounts of cell lysates (5 ug per lane) were separated by SDS-PAGE and immunoblotted with anti-SCFD1. Positive lysates [LY414181] (100ug) and [LC414181] (20ug) can be purchased separately from OriGene.



Western blot analysis of extracts (35ug) from 9 different cell lines by using anti-SCFD1 monoclonal antibody.