

Product datasheet for **CF504656**

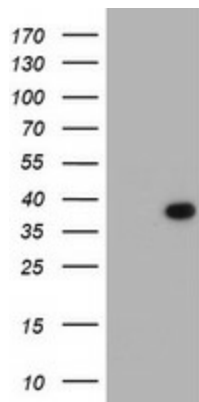
LRRC39 Mouse Monoclonal Antibody [Clone ID: OTI2D9]

Product data:

Product Type:	Primary Antibodies
Clone Name:	OTI2D9
Applications:	WB
Recommended Dilution:	WB 1:2000
Reactivity:	Human, Mouse, Rat
Host:	Mouse
Isotype:	IgG1
Clonality:	Monoclonal
Immunogen:	Full length human recombinant protein of human LRRC39(NP_653221) produced in HEK293T cell.
Formulation:	Lyophilized powder (original buffer 1X PBS, pH 7.3, 8% trehalose)
Reconstitution Method:	For reconstitution, we recommend adding 100uL distilled water to a final antibody concentration of about 1 mg/mL. To use this carrier-free antibody for conjugation experiment, we strongly recommend performing another round of desalting process. (OriGene recommends Zeba Spin Desalting Columns, 7KMWCO from Thermo Scientific)
Purification:	Purified from mouse ascites fluids or tissue culture supernatant by affinity chromatography (protein A/G)
Conjugation:	Unconjugated
Storage:	Store at -20°C as received.
Stability:	Stable for 12 months from date of receipt.
Predicted Protein Size:	38.6 kDa
Gene Name:	leucine rich repeat containing 39
Database Link:	NP_653221 Entrez Gene 127495 Human Q96DD0
Synonyms:	DKFZp313O1122; MGC14816
Protein Families:	Druggable Genome



[View online »](#)

Product images:

HEK293T cells were transfected with the pCMV6-ENTRY control (Cat# [PS100001], Left lane) or pCMV6-ENTRY LRRC39 (Cat# [RC203341], Right lane) cDNA for 48 hrs and lysed. Equivalent amounts of cell lysates (5 ug per lane) were separated by SDS-PAGE and immunoblotted with anti-LRRC39 (Cat# [TA504656]). Positive lysates [LY408254] (100ug) and [LC408254] (20ug) can be purchased separately from OriGene.