

Product datasheet for **CF504634**

C21ORF56 (SPATC1L) Mouse Monoclonal Antibody [Clone ID: OTI1H6]

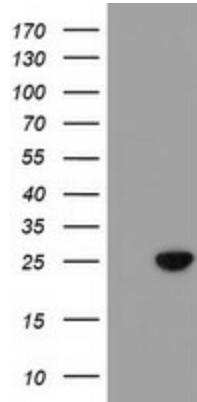
Product data:

Product Type:	Primary Antibodies
Clone Name:	OTI1H6
Applications:	FC, IHC, WB
Recommended Dilution:	WB 1:500~2000, IHC 1:150, FLOW 1:100
Reactivity:	Human, Dog, Mouse, Rat
Host:	Mouse
Isotype:	IgG1
Clonality:	Monoclonal
Immunogen:	Full length human recombinant protein of human C21orf56(NP_115637) produced in HEK293T cell.
Formulation:	Lyophilized powder (original buffer 1X PBS, pH 7.3, 8% trehalose)
Reconstitution Method:	For reconstitution, we recommend adding 100uL distilled water to a final antibody concentration of about 1 mg/mL. To use this carrier-free antibody for conjugation experiment, we strongly recommend performing another round of desalting process. (OriGene recommends Zeba Spin Desalting Columns, 7KMWCO from Thermo Scientific)
Purification:	Purified from mouse ascites fluids or tissue culture supernatant by affinity chromatography (protein A/G)
Conjugation:	Unconjugated
Storage:	Store at -20°C as received.
Stability:	Stable for 12 months from date of receipt.
Predicted Protein Size:	20.9 kDa
Gene Name:	spermatogenesis and centriole associated 1 like
Database Link:	NP_115637 Entrez Gene 76573 MouseEntrez Gene 499418 RatEntrez Gene 607689 DogEntrez Gene 84221 Human Q9H0A9
Synonyms:	C21orf56

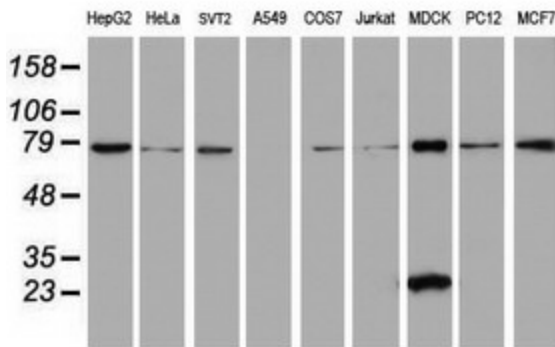


[View online »](#)

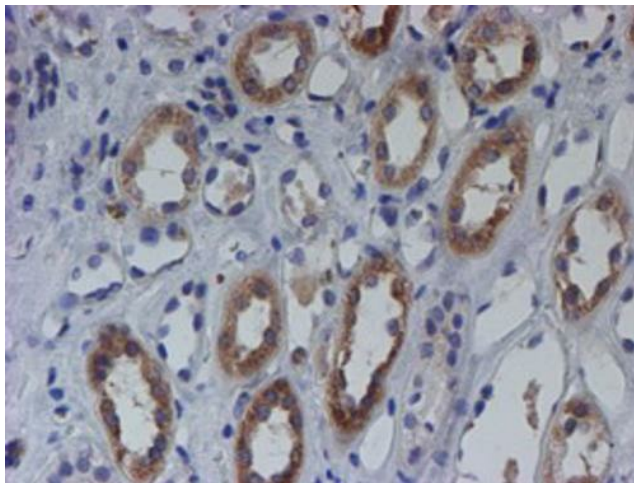
Product images:



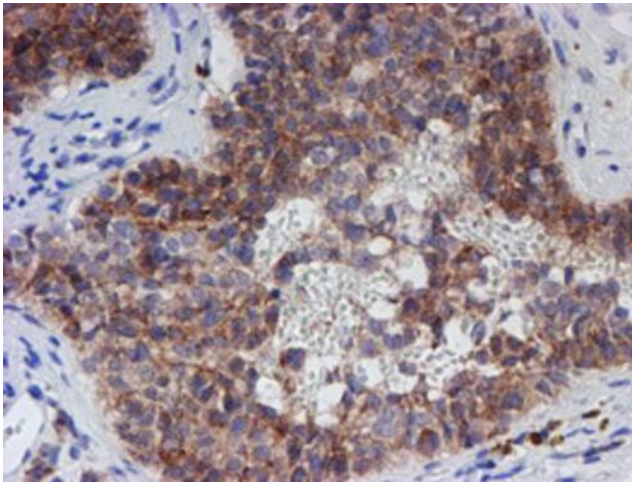
HEK293T cells were transfected with the pCMV6-ENTRY control (Cat# [PS100001], Left lane) or pCMV6-ENTRY C21orf56 (Cat# [RC224562], Right lane) cDNA for 48 hrs and lysed. Equivalent amounts of cell lysates (5 ug per lane) were separated by SDS-PAGE and immunoblotted with anti-C21orf56 (Cat# [TA504634]). Positive lysates [LY410249] (100ug) and [LC410249] (20ug) can be purchased separately from OriGene.



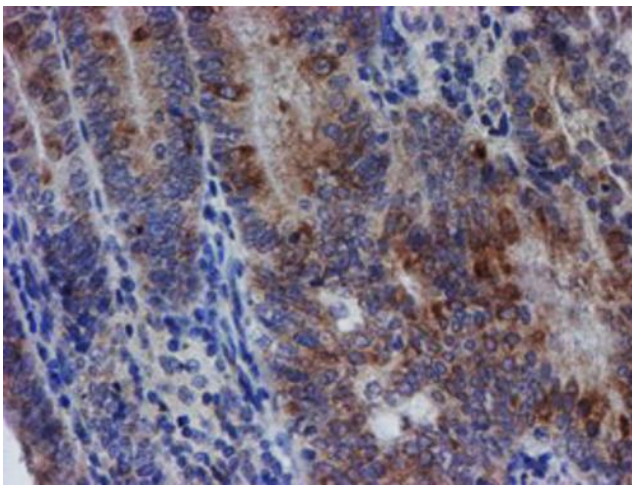
Western blot analysis of extracts (35ug) from 9 different cell lines by using anti-C21orf56 monoclonal antibody (HepG2: human; HeLa: human; SVT2: mouse; A549: human; COS7: monkey; Jurkat: human; MDCK: canine; PC12: rat; MCF7: human).



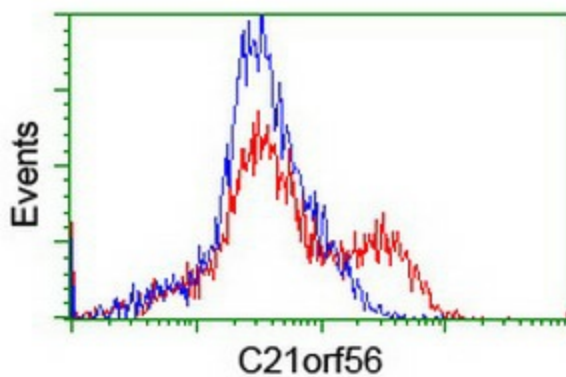
Immunohistochemical staining of paraffin-embedded Human Kidney tissue within the normal limits using anti-C21orf56 mouse monoclonal antibody. (Heat-induced epitope retrieval by 10mM citric buffer, pH6.0, 100°C for 10min, [TA504634])



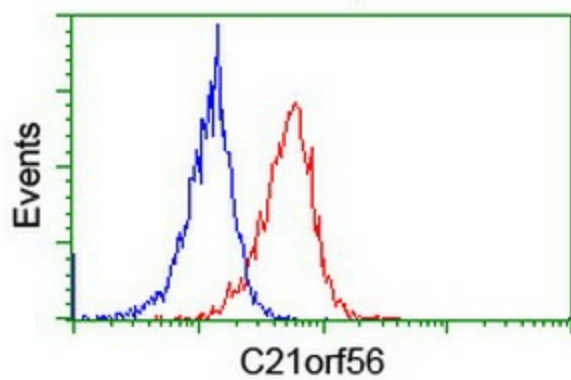
Immunohistochemical staining of paraffin-embedded Human pancreas tissue within the normal limits using anti-C21orf56 mouse monoclonal antibody. (Heat-induced epitope retrieval by 10mM citric buffer, pH6.0, 100°C for 10min, [TA504634])



Immunohistochemical staining of paraffin-embedded Adenocarcinoma of Human endometrium tissue using anti-C21orf56 mouse monoclonal antibody. (Heat-induced epitope retrieval by 10mM citric buffer, pH6.0, 100°C for 10min, [TA504634])



HEK293T cells transfected with either [RC224562] overexpress plasmid (Red) or empty vector control plasmid (Blue) were immunostained by anti-C21orf56 antibody ([TA504634]), and then analyzed by flow cytometry.



Flow cytometric Analysis of Jurkat cells, using anti-C21orf56 antibody ([TA504634]), (Red), compared to a nonspecific negative control antibody, (Blue).