

Product datasheet for **CF504630**

SAT2 Mouse Monoclonal Antibody [Clone ID: OTI2A3]

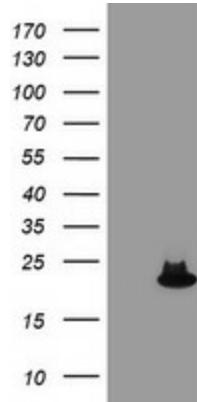
Product data:

Product Type:	Primary Antibodies
Clone Name:	OTI2A3
Applications:	FC, IF, WB
Recommended Dilution:	WB 1:500~2000, IF 1:100, FLOW 1:100
Reactivity:	Human, Monkey
Host:	Mouse
Isotype:	IgG1
Clonality:	Monoclonal
Immunogen:	Full length human recombinant protein of human SAT2(NP_597998) produced in HEK293T cell.
Formulation:	Lyophilized powder (original buffer 1X PBS, pH 7.3, 8% trehalose)
Reconstitution Method:	For reconstitution, we recommend adding 100uL distilled water to a final antibody concentration of about 1 mg/mL. To use this carrier-free antibody for conjugation experiment, we strongly recommend performing another round of desalting process. (OriGene recommends Zeba Spin Desalting Columns, 7KMWCO from Thermo Scientific)
Purification:	Purified from mouse ascites fluids or tissue culture supernatant by affinity chromatography (protein A/G)
Conjugation:	Unconjugated
Storage:	Store at -20°C as received.
Stability:	Stable for 12 months from date of receipt.
Predicted Protein Size:	19 kDa
Gene Name:	spermidine/spermine N1-acetyltransferase family member 2
Database Link:	NP_597998 Entrez Gene 716044 Monkey Entrez Gene 112483 Human Q96F10
Synonyms:	SSAT2
Protein Pathways:	Arginine and proline metabolism, Metabolic pathways

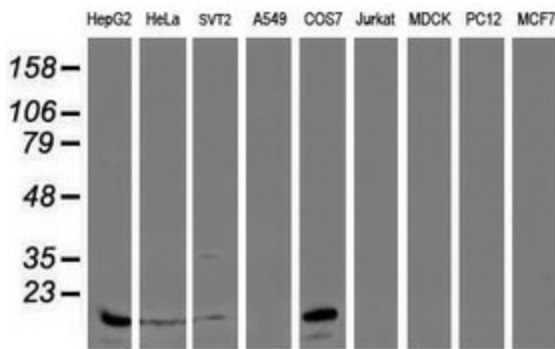


[View online »](#)

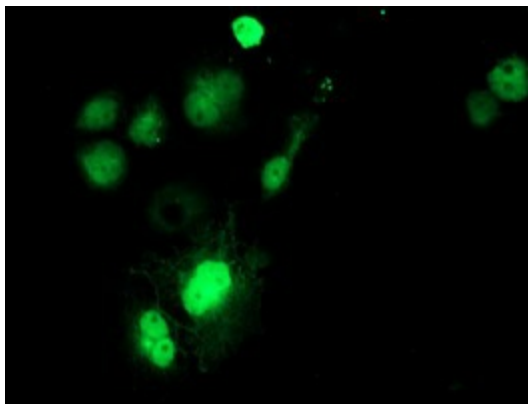
Product images:



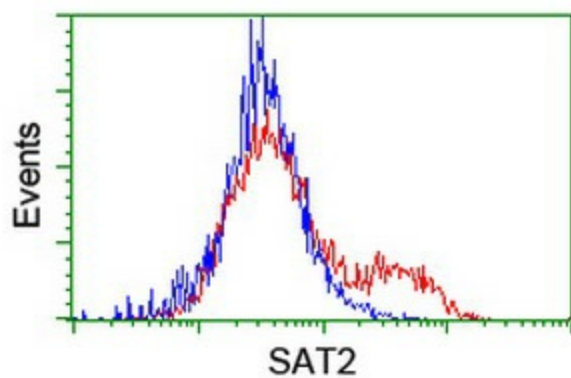
HEK293T cells were transfected with the pCMV6-ENTRY control (Left lane) or pCMV6-ENTRY SAT2 ([RC204044], Right lane) cDNA for 48 hrs and lysed. Equivalent amounts of cell lysates (5 ug per lane) were separated by SDS-PAGE and immunoblotted with anti-SAT2. Positive lysates [LY408821] (100ug) and [LC408821] (20ug) can be purchased separately from OriGene.



Western blot analysis of extracts (35ug) from 9 different cell lines by using anti-SAT2 monoclonal antibody (HepG2: human; HeLa: human; SVT2: mouse; A549: human; COS7: monkey; Jurkat: human; MDCK: canine; PC12: rat; MCF7: human).



Anti-SAT2 mouse monoclonal antibody ([TA504630]) immunofluorescent staining of COS7 cells transiently transfected by pCMV6-ENTRY SAT2 ([RC204044]).



HEK293T cells transfected with either [RC204044] overexpress plasmid (Red) or empty vector control plasmid (Blue) were immunostained by anti-SAT2 antibody ([TA504630]), and then analyzed by flow cytometry.