

Product datasheet for **CF504627**

ATRIP Mouse Monoclonal Antibody [Clone ID: OTI1G6]

Product data:

Product Type:	Primary Antibodies
Clone Name:	OTI1G6
Applications:	WB
Recommended Dilution:	WB 1:2000
Reactivity:	Human
Host:	Mouse
Isotype:	IgG2b
Clonality:	Monoclonal
Immunogen:	Human recombinant protein fragment corresponding to amino acids 42-309 of human ATRIP(NP_569055) produced in E.coli.
Formulation:	Lyophilized powder (original buffer 1X PBS, pH 7.3, 8% trehalose)
Reconstitution Method:	For reconstitution, we recommend adding 100uL distilled water to a final antibody concentration of about 1 mg/mL. To use this carrier-free antibody for conjugation experiment, we strongly recommend performing another round of desalting process. (OriGene recommends Zeba Spin Desalting Columns, 7KMWCO from Thermo Scientific)
Purification:	Purified from mouse ascites fluids or tissue culture supernatant by affinity chromatography (protein A/G)
Conjugation:	Unconjugated
Storage:	Store at -20°C as received.
Stability:	Stable for 12 months from date of receipt.
Predicted Protein Size:	85.7 kDa
Gene Name:	ATR interacting protein
Database Link:	NP_569055 Entrez Gene 84126 Human Q8WXE1



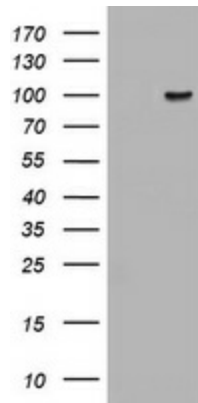
[View online »](#)

Background:

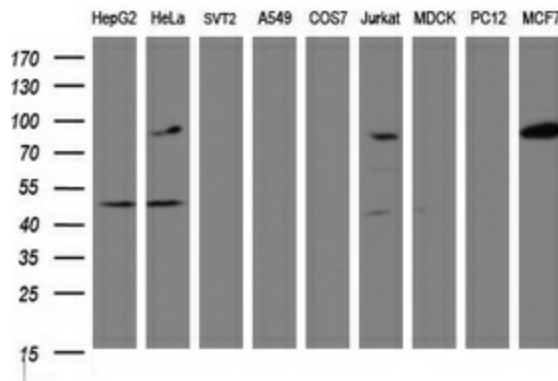
The product of this gene is an essential component of the DNA damage checkpoint, and binds to single-stranded DNA coated with replication protein A that accumulates at sites of DNA damage. The encoded protein interacts with the ataxia telangiectasia and Rad3 related protein, a checkpoint kinase, resulting in accumulation of the kinase at intranuclear foci induced by DNA damage. Multiple transcript variants encoding different isoforms have been found for this gene. [provided by RefSeq, Jul 2008]

Synonyms:

DKFZp762J2115; FLJ12343; MGC20625; MGC21482; MGC26740

Product images:


HEK293T cells were transfected with the pCMV6-ENTRY control (Left lane) or pCMV6-ENTRY ATRIP ([RC223562], Right lane) cDNA for 48 hrs and lysed. Equivalent amounts of cell lysates (5 ug per lane) were separated by SDS-PAGE and immunoblotted with anti-ATRIP. Positive lysates [LY408977] (100ug) and [LC408977] (20ug) can be purchased separately from OriGene.



Western blot analysis of extracts (35ug) from 9 different cell lines by using anti-ATRIP monoclonal antibody (HepG2: human; HeLa: human; SVT2: mouse; A549: human; COS7: monkey; Jurkat: human; MDCK: canine; PC12: rat; MCF7: human).