

Product datasheet for **CF504606**

Carboxypeptidase A (CPA1) Mouse Monoclonal Antibody [Clone ID: OTI4E12]

Product data:

Product Type:	Primary Antibodies
Clone Name:	OTI4E12
Applications:	FC, WB
Recommended Dilution:	WB 1:2000, FLOW 1:100
Reactivity:	Human
Host:	Mouse
Isotype:	IgG1
Clonality:	Monoclonal
Immunogen:	Full length human recombinant protein of human CPA1(NP_001859) produced in HEK293T cell.
Formulation:	Lyophilized powder (original buffer 1X PBS, pH 7.3, 8% trehalose)
Reconstitution Method:	For reconstitution, we recommend adding 100uL distilled water to a final antibody concentration of about 1 mg/mL. To use this carrier-free antibody for conjugation experiment, we strongly recommend performing another round of desalting process. (OriGene recommends Zeba Spin Desalting Columns, 7KMWCO from Thermo Scientific)
Purification:	Purified from mouse ascites fluids or tissue culture supernatant by affinity chromatography (protein A/G)
Conjugation:	Unconjugated
Storage:	Store at -20°C as received.
Stability:	Stable for 12 months from date of receipt.
Predicted Protein Size:	45.5 kDa
Gene Name:	carboxypeptidase A1
Database Link:	NP_001859 Entrez Gene 1357 Human P15085
Background:	Three different forms of human pancreatic procarboxypeptidase A have been isolated. This gene encodes a monomeric pancreatic exopeptidase involved in zymogen inhibition. [provided by RefSeq]. COMPLETENESS: complete on the 3' end.

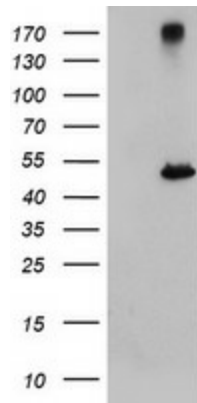


[View online »](#)

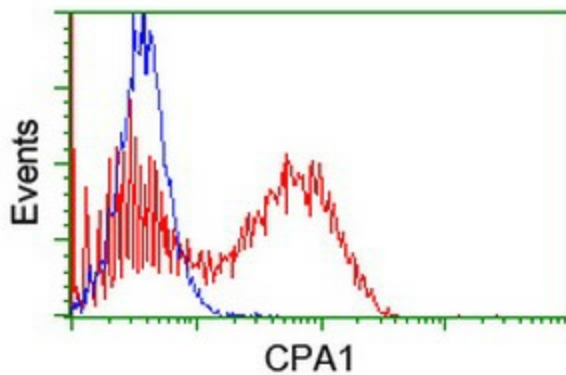
Synonyms: CPA

Protein Families: Druggable Genome, ES Cell Differentiation/IPS, Protease, Secreted Protein

Product images:



HEK293T cells were transfected with the pCMV6-ENTRY control (Left lane) or pCMV6-ENTRY CPA1 ([RC202720], Right lane) cDNA for 48 hrs and lysed. Equivalent amounts of cell lysates (5 ug per lane) were separated by SDS-PAGE and immunoblotted with anti-CPA1. Positive lysates [LY419696] (100ug) and [LC419696] (20ug) can be purchased separately from OriGene.



HEK293T cells transfected with either [RC202720] overexpress plasmid (Red) or empty vector control plasmid (Blue) were immunostained by anti-CPA1 antibody ([TA504606]), and then analyzed by flow cytometry.