

Product datasheet for **CF504600**

XTP4 (MIEN1) Mouse Monoclonal Antibody [Clone ID: OT11E8]

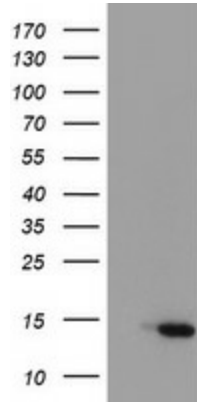
Product data:

Product Type:	Primary Antibodies
Clone Name:	OT11E8
Applications:	FC, WB
Recommended Dilution:	WB 1:2000, FLOW 1:100
Reactivity:	Human, Mouse
Host:	Mouse
Isotype:	IgG2a
Clonality:	Monoclonal
Immunogen:	Full length human recombinant protein of human C17orf37(NP_115715) produced in E.coli.
Formulation:	Lyophilized powder (original buffer 1X PBS, pH 7.3, 8% trehalose)
Reconstitution Method:	For reconstitution, we recommend adding 100uL distilled water to a final antibody concentration of about 1 mg/mL. To use this carrier-free antibody for conjugation experiment, we strongly recommend performing another round of desalting process. (OriGene recommends Zeba Spin Desalting Columns, 7KMWCO from Thermo Scientific)
Purification:	Purified from mouse ascites fluids or tissue culture supernatant by affinity chromatography (protein A/G)
Conjugation:	Unconjugated
Storage:	Store at -20°C as received.
Stability:	Stable for 12 months from date of receipt.
Predicted Protein Size:	12.2 kDa
Gene Name:	migration and invasion enhancer 1
Database Link:	NP_115715 Entrez Gene 103742 Mouse Entrez Gene 84299 Human Q9BRT3
Synonyms:	C17orf37; C35; ORB3; RDX12; XTP4

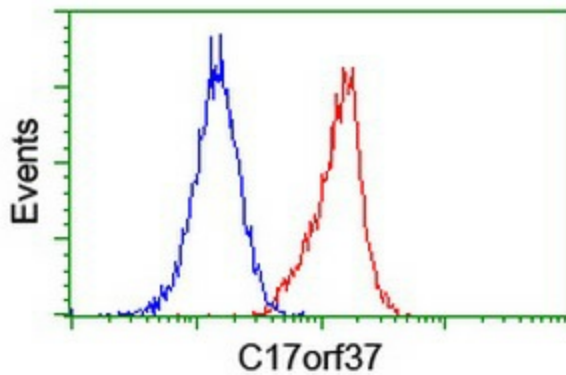


[View online »](#)

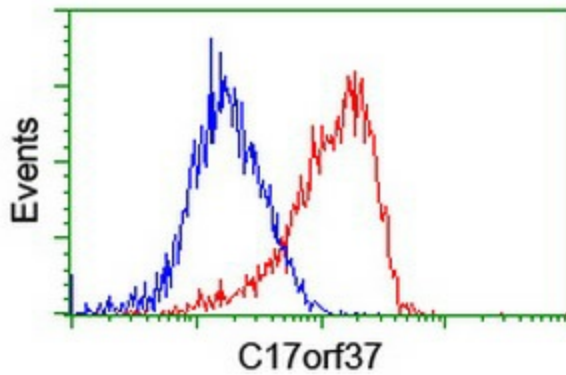
Product images:



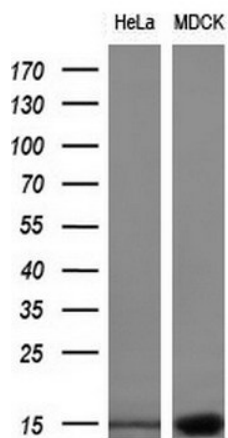
HEK293T cells were transfected with the pCMV6-ENTRY control (Left lane) or pCMV6-ENTRY C17orf37 ([RC203346], Right lane) cDNA for 48 hrs and lysed. Equivalent amounts of cell lysates (5 ug per lane) were separated by SDS-PAGE and immunoblotted with anti-C17orf37. Positive lysates [LY410176] (100ug) and [LC410176] (20ug) can be purchased separately from OriGene.



Flow cytometric Analysis of Jurkat cells, using anti-C17orf37 antibody ([TA504600]), (Red), compared to a nonspecific negative control antibody, (Blue).



Flow cytometric Analysis of HeLa cells, using anti-C17orf37 antibody ([TA504600]), (Red), compared to a nonspecific negative control antibody, (Blue).



Western blot analysis of extracts (10ug) from 2 different cell lines by using anti-C17orf37 monoclonal antibody (1:200).