

Product datasheet for **CF504564**

CYB5R1 Mouse Monoclonal Antibody [Clone ID: OTI4B7]

Product data:

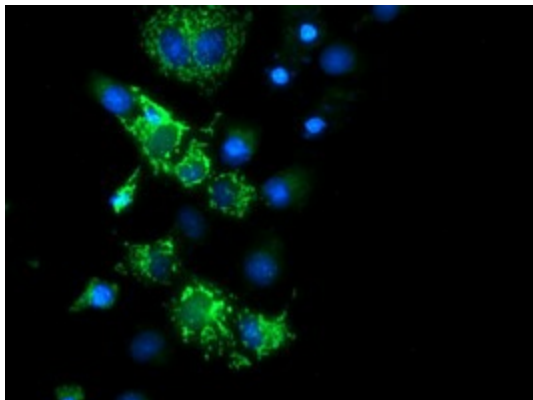
Product Type:	Primary Antibodies
Clone Name:	OTI4B7
Applications:	IF, IHC, WB
Recommended Dilution:	WB 1:2000, IHC 1:150, IF 1:100
Reactivity:	Human, Mouse, Rat
Host:	Mouse
Isotype:	IgG1
Clonality:	Monoclonal
Immunogen:	Full length human recombinant protein of human CYB5R1(NP_057327) produced in HEK293T cell.
Formulation:	Lyophilized powder (original buffer 1X PBS, pH 7.3, 8% trehalose)
Reconstitution Method:	For reconstitution, we recommend adding 100uL distilled water to a final antibody concentration of about 1 mg/mL. To use this carrier-free antibody for conjugation experiment, we strongly recommend performing another round of desalting process. (OriGene recommends Zeba Spin Desalting Columns, 7KMWCO from Thermo Scientific)
Purification:	Purified from mouse ascites fluids or tissue culture supernatant by affinity chromatography (protein A/G)
Conjugation:	Unconjugated
Storage:	Store at -20°C as received.
Stability:	Stable for 12 months from date of receipt.
Predicted Protein Size:	33.9 kDa
Gene Name:	cytochrome b5 reductase 1
Database Link:	NP_057327 Entrez Gene 72017 Mouse Entrez Gene 304805 Rat Entrez Gene 51706 Human Q9UHQ9
Synonyms:	B5R.1; B5R1; B5R2; humb5R2; NQO3A2
Protein Families:	Druggable Genome, Transmembrane



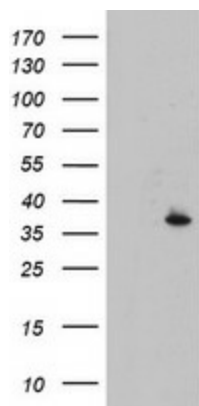
[View online »](#)

Protein Pathways: Amino sugar and nucleotide sugar metabolism

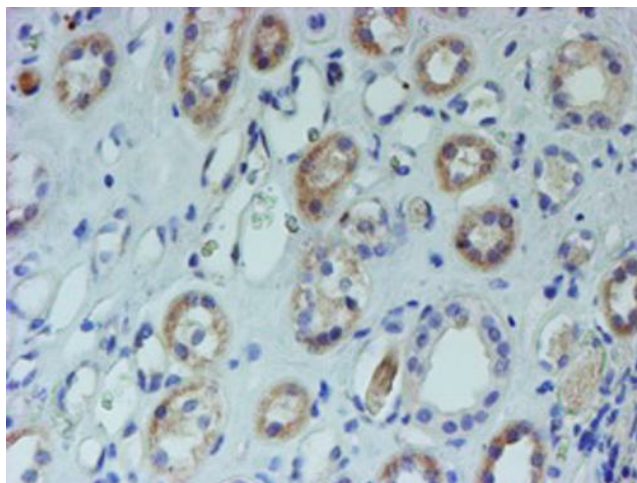
Product images:



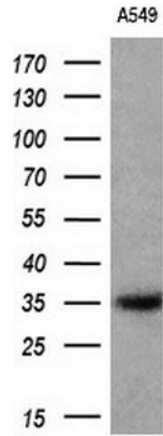
Western blot analysis of extracts (10ug) from A549 cell line by using anti-CYB5R1 monoclonal antibody (1:200).



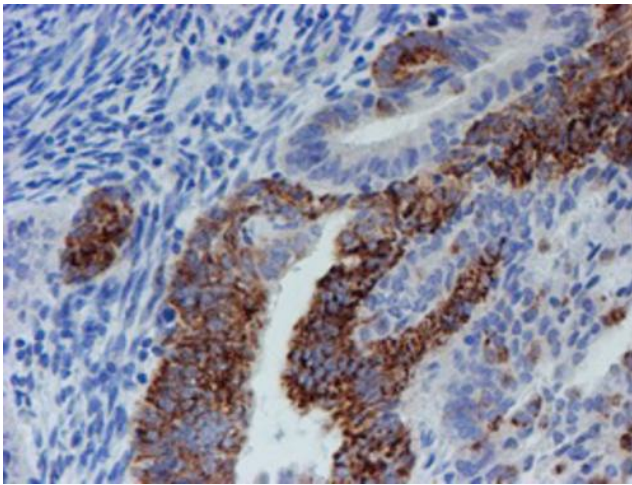
HEK293T cells were transfected with the pCMV6-ENTRY control (Cat# [PS100001], Left lane) or pCMV6-ENTRY CYB5R1 (Cat# [RC205833], Right lane) cDNA for 48 hrs and lysed. Equivalent amounts of cell lysates (5 ug per lane) were separated by SDS-PAGE and immunoblotted with anti-CYB5R1(Cat# [TA504564]). Positive lysates [LY402525] (100ug) and [LC402525] (20ug) can be purchased separately from OriGene.



Immunohistochemical staining of paraffin-embedded Human Kidney tissue within the normal limits using anti-CYB5R1 mouse monoclonal antibody. (Heat-induced epitope retrieval by 10mM citric buffer, pH6.0, 100°C for 10min, [TA504564])



Western blot analysis of extracts (10ug) from 1 cell line by using anti-CYB5R1 monoclonal antibody (1:200).



Immunohistochemical staining of paraffin-embedded Adenocarcinoma of Human endometrium tissue using anti-CYB5R1 mouse monoclonal antibody. (Heat-induced epitope retrieval by 10mM citric buffer, pH6.0, 100°C for 10min, [TA504564])