

## Product datasheet for **CF504536**

### **LRRC50 (DNAAF1) Mouse Monoclonal Antibody [Clone ID: OTI3B10]**

#### **Product data:**

<b>Product Type:</b>	Primary Antibodies
<b>Clone Name:</b>	OTI3B10
<b>Applications:</b>	WB
<b>Recommended Dilution:</b>	WB 1:500~2000
<b>Reactivity:</b>	Human, Dog
<b>Host:</b>	Mouse
<b>Isotype:</b>	IgG1
<b>Clonality:</b>	Monoclonal
<b>Immunogen:</b>	Full length human recombinant protein of human LRRC50(NP_848547) produced in HEK293T cell.
<b>Formulation:</b>	Lyophilized powder (original buffer 1X PBS, pH 7.3, 8% trehalose)
<b>Reconstitution Method:</b>	For reconstitution, we recommend adding 100uL distilled water to a final antibody concentration of about 1 mg/mL. To use this carrier-free antibody for conjugation experiment, we strongly recommend performing another round of desalting process. (OriGene recommends Zeba Spin Desalting Columns, 7KMWCO from Thermo Scientific)
<b>Purification:</b>	Purified from mouse ascites fluids or tissue culture supernatant by affinity chromatography (protein A/G)
<b>Conjugation:</b>	Unconjugated
<b>Storage:</b>	Store at -20°C as received.
<b>Stability:</b>	Stable for 12 months from date of receipt.
<b>Predicted Protein Size:</b>	79.8 kDa
<b>Gene Name:</b>	dynein axonemal assembly factor 1
<b>Database Link:</b>	<a href="#">NP_848547</a> <a href="#">Entrez Gene 479628 Dog</a> <a href="#">Entrez Gene 123872 Human</a> <a href="#">Q8NEP3</a>



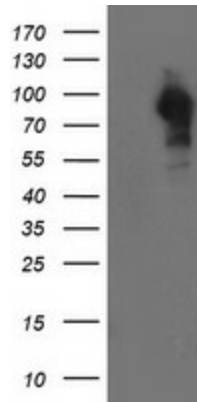
[View online »](#)

**Background:**

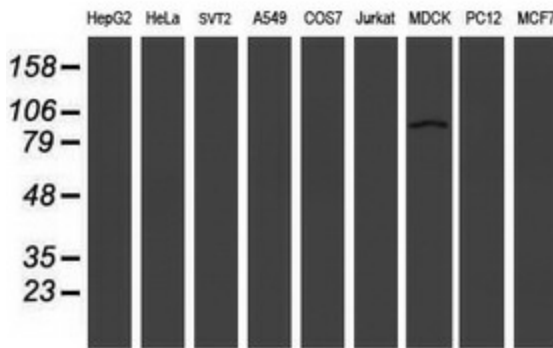
The protein encoded by this gene is cilium-specific and is required for the stability of the ciliary architecture. It is involved in the regulation of microtubule-based cilia and actin-based brush border microvilli. Mutations in this gene are associated with primary ciliary dyskinesia-13. COMPLETENESS: complete on the 3' end.

**Synonyms:**

CILD13; LRRC50; ODA7; swt

**Product images:**


HEK293T cells were transfected with the pCMV6-ENTRY control (Left lane) or pCMV6-ENTRY LRRC50 ([RC205452], Right lane) cDNA for 48 hrs and lysed. Equivalent amounts of cell lysates (5 ug per lane) were separated by SDS-PAGE and immunoblotted with anti-LRRC50. Positive lysates [LY405926] (100ug) and [LC405926] (20ug) can be purchased separately from OriGene.



Western blot analysis of extracts (35ug) from 9 different cell lines by using anti-LRRC50 monoclonal antibody (HepG2: human; HeLa: human; SVT2: mouse; A549: human; COS7: monkey; Jurkat: human; MDCK: canine; PC12: rat; MCF7: human).