

## Product datasheet for **CF504482**

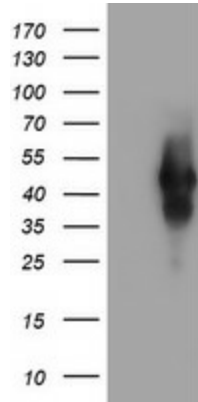
### TMEFF2 Mouse Monoclonal Antibody [Clone ID: OTI3H8]

#### Product data:

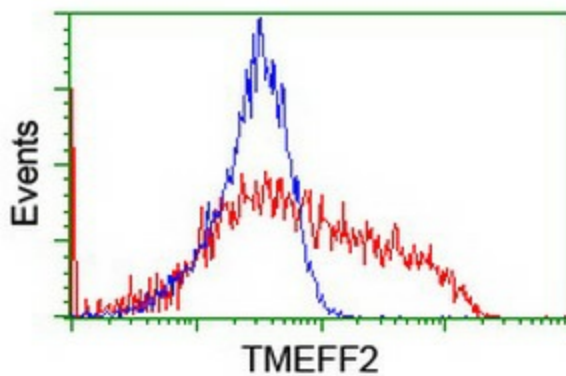
|                         |  |
|-------------------------|--|
| Product Type:           | Primary Antibodies   |
| Clone Name:             | OTI3H8   |
| Applications:           | FC, WB   |
| Recommended Dilution:   | WB 1:2000, FLOW 1:100  |
| Reactivity:             | Human, Mouse   |
| Host:                   | Mouse  |
| Isotype:                | IgG2a  |
| Clonality:              | Monoclonal   |
| Immunogen:              | Full length human recombinant protein of human TMEFF2(NP_057276) produced in HEK293T cell.   |
| Formulation:            | Lyophilized powder (original buffer 1X PBS, pH 7.3, 8% trehalose)  |
| Reconstitution Method:  | For reconstitution, we recommend adding 100uL distilled water to a final antibody concentration of about 1 mg/mL. To use this carrier-free antibody for conjugation experiment, we strongly recommend performing another round of desalting process. (OriGene recommends Zeba Spin Desalting Columns, 7KMWCO from Thermo Scientific) |
| Purification:           | Purified from mouse ascites fluids or tissue culture supernatant by affinity chromatography (protein A/G)  |
| Conjugation:            | Unconjugated   |
| Storage:                | Store at -20°C as received.  |
| Stability:              | Stable for 12 months from date of receipt.   |
| Predicted Protein Size: | 41.2 kDa   |
| Gene Name:              | transmembrane protein with EGF like and two follistatin like domains 2   |
| Database Link:          | <a href="#">NP_057276</a><br><a href="#">Entrez Gene 23671 Human</a><br><a href="#">Q9UIK5</a>   |
| Synonyms:               | CT120.2; HPP1; TENB2; TPEF; TR; TR-2   |
| Protein Families:       | Transmembrane  |



[View online »](#)

**Product images:**

HEK293T cells were transfected with the pCMV6-ENTRY control (Left lane) or pCMV6-ENTRY TMEFF2 ([RC203736], Right lane) cDNA for 48 hrs and lysed. Equivalent amounts of cell lysates (5 ug per lane) were separated by SDS-PAGE and immunoblotted with anti-TMEFF2. Positive lysates [LY402517] (100ug) and [LC402517] (20ug) can be purchased separately from OriGene.



HEK293T cells transfected with either [RC203736] overexpress plasmid (Red) or empty vector control plasmid (Blue) were immunostained by anti-TMEFF2 antibody ([TA504482]), and then analyzed by flow cytometry.