

## Product datasheet for **CF504463**

### Phosphoribosyl pyrophosphate amidotransferase (PPAT) Mouse Monoclonal Antibody [Clone ID: OTI2C2]

#### Product data:

|                         |  |
|-------------------------|--|
| Product Type:           | Primary Antibodies   |
| Clone Name:             | OTI2C2   |
| Applications:           | FC, WB   |
| Recommended Dilution:   | WB 1:500, FLOW 1:100   |
| Reactivity:             | Human, Mouse, Rat  |
| Host:                   | Mouse  |
| Isotype:                | IgG1   |
| Clonality:              | Monoclonal   |
| Immunogen:              | Human recombinant protein fragment corresponding to amino acids 42-278 of human PPAT(NP_002694) produced in E.coli.  |
| Formulation:            | Lyophilized powder (original buffer 1X PBS, pH 7.3, 8% trehalose)  |
| Reconstitution Method:  | For reconstitution, we recommend adding 100uL distilled water to a final antibody concentration of about 1 mg/mL. To use this carrier-free antibody for conjugation experiment, we strongly recommend performing another round of desalting process. (OriGene recommends Zeba Spin Desalting Columns, 7KMWCO from Thermo Scientific) |
| Purification:           | Purified from mouse ascites fluids or tissue culture supernatant by affinity chromatography (protein A/G)  |
| Conjugation:            | Unconjugated   |
| Storage:                | Store at -20°C as received.  |
| Stability:              | Stable for 12 months from date of receipt.   |
| Predicted Protein Size: | 57.2 kDa   |
| Gene Name:              | phosphoribosyl pyrophosphate amidotransferase  |
| Database Link:          | <a href="#">NP_002694</a><br><a href="#">Entrez Gene 117544 Rat</a> <a href="#">Entrez Gene 231327 Mouse</a> <a href="#">Entrez Gene 5471 Human</a><br><a href="#">Q06203</a>  |



[View online »](#)

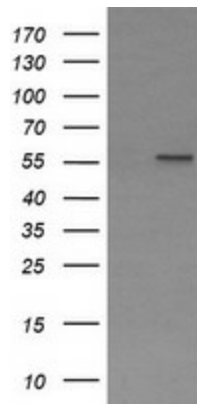
**Background:** The protein encoded by this gene is a member of the purine/pyrimidine phosphoribosyltransferase family. It is a regulatory allosteric enzyme that catalyzes the first step of de novo purine nucleotide biosynthetic pathway. This gene and PAICS/AIRC gene, a bifunctional enzyme catalyzing steps six and seven of this pathway, are located in close proximity on chromosome 4, and divergently transcribed from an intergenic region. [provided by RefSeq, Mar 2011]

**Synonyms:** ATASE; GPAT; PRAT

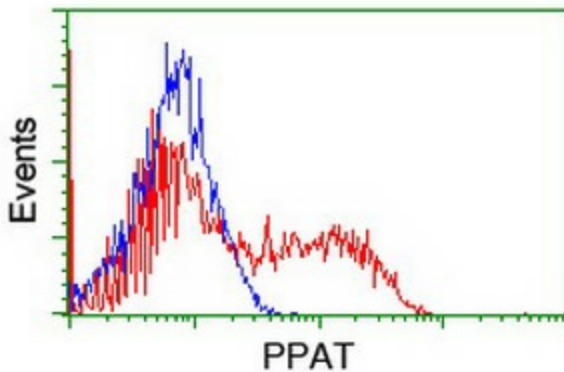
**Protein Families:** Druggable Genome, Protease

**Protein Pathways:** Alanine, aspartate and glutamate metabolism, Metabolic pathways, Purine metabolism

**Product images:**



HEK293T cells were transfected with the pCMV6-ENTRY control (Left lane) or pCMV6-ENTRY PPAT ([RC201144], Right lane) cDNA for 48 hrs and lysed. Equivalent amounts of cell lysates (5 ug per lane) were separated by SDS-PAGE and immunoblotted with anti-PPAT. Positive lysates [LY400951] (100ug) and [LC400951] (20ug) can be purchased separately from OriGene.



HEK293T cells transfected with either [RC201144] overexpress plasmid (Red) or empty vector control plasmid (Blue) were immunostained by anti-PPAT antibody ([TA504463]), and then analyzed by flow cytometry.