

Product datasheet for **CF504451**

PALS1 Mouse Monoclonal Antibody [Clone ID: OTI2D3]

Product data:

| | |
|--------------------------------|--|
| Product Type: | Primary Antibodies |
| Clone Name: | OTI2D3 |
| Applications: | FC, WB |
| Recommended Dilution: | WB 1:500~2000, FLOW 1:100 |
| Reactivity: | Human, Dog, Rat, Mouse |
| Host: | Mouse |
| Isotype: | IgG2a |
| Clonality: | Monoclonal |
| Immunogen: | Full length human recombinant protein of human MPP5(NP_071919) produced in HEK293T cell. |
| Formulation: | Lyophilized powder (original buffer 1X PBS, pH 7.3, 8% trehalose) |
| Reconstitution Method: | For reconstitution, we recommend adding 100uL distilled water to a final antibody concentration of about 1 mg/mL. To use this carrier-free antibody for conjugation experiment, we strongly recommend performing another round of desalting process. (OriGene recommends Zeba Spin Desalting Columns, 7KMWCO from Thermo Scientific) |
| Purification: | Purified from mouse ascites fluids or tissue culture supernatant by affinity chromatography (protein A/G) |
| Conjugation: | Unconjugated |
| Storage: | Store at -20°C as received. |
| Stability: | Stable for 12 months from date of receipt. |
| Predicted Protein Size: | 77.1 kDa |
| Gene Name: | protein associated with LIN7 1, MAGUK family member |
| Database Link: | NP_071919 Entrez Gene 314259 RatEntrez Gene 490740 DogEntrez Gene 64398 Human Q8N3R9 |



[View online »](#)

Background:

This gene encodes a member of the p55-like subfamily of the membrane-associated guanylate kinase (MAGUK) gene superfamily. The encoded protein participates in the polarization of differentiating cells, has been shown to regulate myelinating Schwann cells (PMID: 20237282), and is one of the components of the Crumbs complex in the retina. Mice which express lower levels of the orthologous protein have retinal degeneration and impaired vision (PMID: 22114289). Multiple transcript variants encoding different isoforms have been found for this gene. [provided by RefSeq, Feb 2012]

Synonyms:

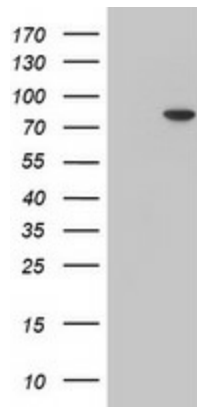
PALS1

Protein Families:

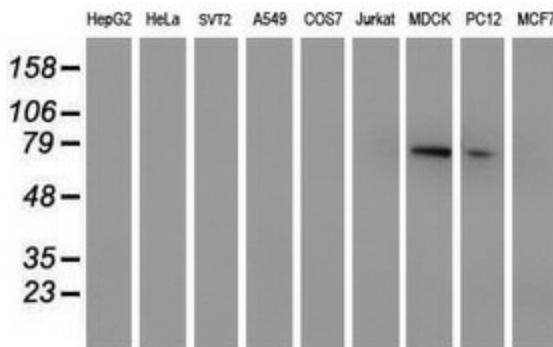
Druggable Genome

Protein Pathways:

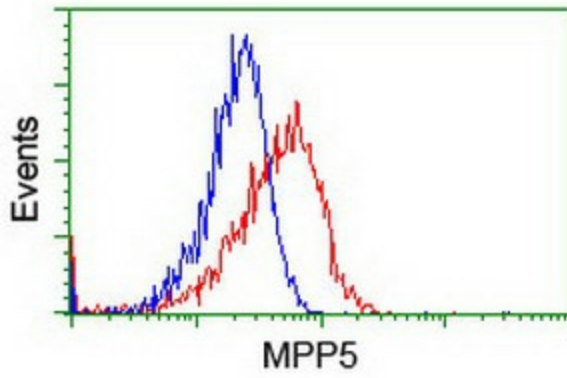
Tight junction

Product images:


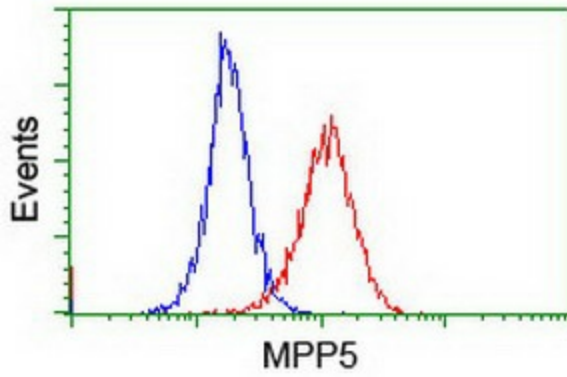
HEK293T cells were transfected with the pCMV6-ENTRY control (Cat# [PS100001], Left lane) or pCMV6-ENTRY MPP5 (Cat# [RC224752], Right lane) cDNA for 48 hrs and lysed. Equivalent amounts of cell lysates (5 ug per lane) were separated by SDS-PAGE and immunoblotted with anti-MPP5 (Cat# [TA504451]). Positive lysates [LY411659] (100ug) and [LC411659] (20ug) can be purchased separately from OriGene.



Western blot analysis of extracts (35ug) from 9 different cell lines by using anti-MPP5 monoclonal antibody (HepG2: human; HeLa: human; SVT2: mouse; A549: human; COS7: monkey; Jurkat: human; MDCK: canine; PC12: rat; MCF7: human).



Flow cytometric Analysis of HeLa cells, using anti-MPP5 antibody (TA504451), (Red), compared to a nonspecific negative control antibody, (Blue).



Flow cytometric Analysis of Jurkat cells, using anti-MPP5 antibody (TA504451), (Red), compared to a nonspecific negative control antibody, (Blue).