

Product datasheet for **CF504366**

DPP8 Mouse Monoclonal Antibody [Clone ID: OTI1D2]

Product data:

Product Type:	Primary Antibodies
Clone Name:	OTI1D2
Applications:	IHC, WB
Recommended Dilution:	WB 1:500~1000, IHC 1:150
Reactivity:	Human, Dog, Rat, Mouse
Host:	Mouse
Isotype:	IgG1
Clonality:	Monoclonal
Immunogen:	Full length human recombinant protein of human DPP8(NP_569118) produced in HEK293T cell.
Formulation:	Lyophilized powder (original buffer 1X PBS, pH 7.3, 8% trehalose)
Reconstitution Method:	For reconstitution, we recommend adding 100uL distilled water to a final antibody concentration of about 1 mg/mL. To use this carrier-free antibody for conjugation experiment, we strongly recommend performing another round of desalting process. (OriGene recommends Zeba Spin Desalting Columns, 7KMWCO from Thermo Scientific)
Purification:	Purified from mouse ascites fluids or tissue culture supernatant by affinity chromatography (protein A/G)
Conjugation:	Unconjugated
Storage:	Store at -20°C as received.
Stability:	Stable for 12 months from date of receipt.
Predicted Protein Size:	101.2 kDa
Gene Name:	dipeptidyl peptidase 8
Database Link:	NP_569118 Entrez Gene 74388 Mouse Entrez Gene 315758 Rat Entrez Gene 487605 Dog Entrez Gene 54878 Human Q6V1X1


[View online »](#)

Background:

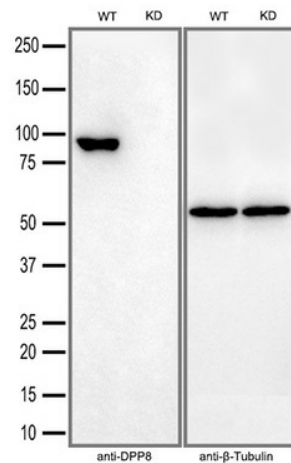
This gene encodes a member of the peptidase S9B family, a small family of dipeptidyl peptidases that are able to cleave peptide substrates at a prolyl bond. The encoded protein shares similarity with dipeptidyl peptidase IV in that it is ubiquitously expressed, and hydrolyzes the same substrates. These similarities suggest that, like dipeptidyl peptidase IV, this protein may play a role in T-cell activation and immune function. Alternatively spliced transcript variants encoding different isoforms have been described. [provided by RefSeq]

Synonyms:

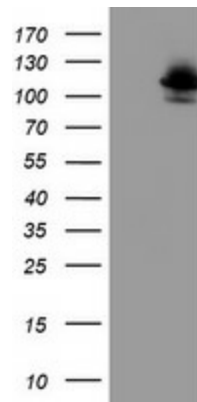
DP8; DPRP1; MSTP141

Protein Families:

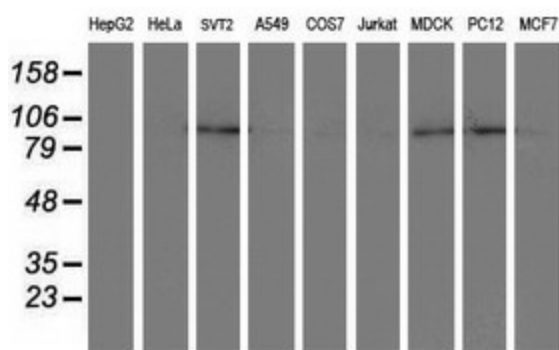
Druggable Genome, Protease, Transmembrane

Product images:


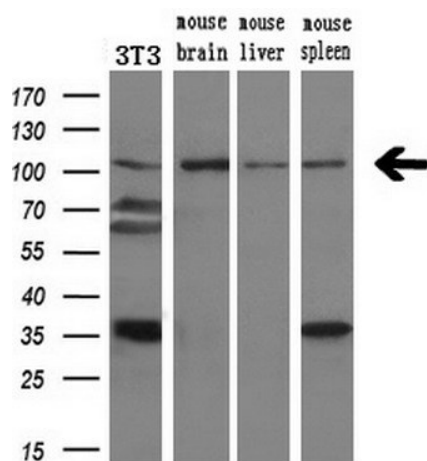
Equivalent amounts of cell lysates (30 ug per lane) of wild-type HeLa cells(WT) and DPP8-Knockdown HeLa cells(KD) were separated by SDS-PAGE and immunoblotted with anti-DPP8 monoclonal antibody [TA504366](1:2500). Then the blotted membrane was stripped and reprobed with anti-β-Tubulin antibody as a loading control.



HEK293T cells were transfected with the pCMV6-ENTRY control (Cat# [PS100001], Left lane) or pCMV6-ENTRY DPP8 (Cat# [RC214685], Right lane) cDNA for 48 hrs and lysed. Equivalent amounts of cell lysates (5 ug per lane) were separated by SDS-PAGE and immunoblotted with anti-DPP8(Cat# [TA504366]). Positive lysates [LY403323] (100ug) and [LC403323] (20ug) can be purchased separately from OriGene.



Western blot analysis of extracts (35ug) from 9 different cell lines by using anti-DPP8 monoclonal antibody.



Western blot analysis of extracts (10ug) from a mouse cell line and 3 different mouse tissues by using anti-DPP8 monoclonal antibody (1:200).

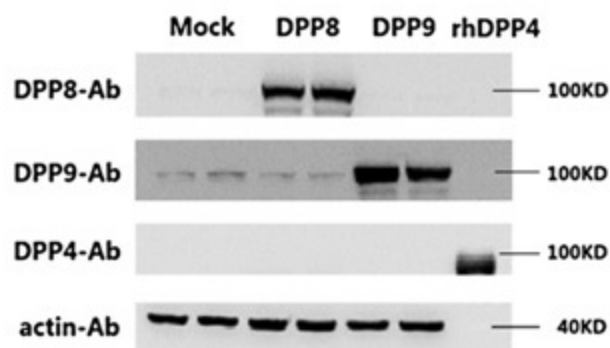
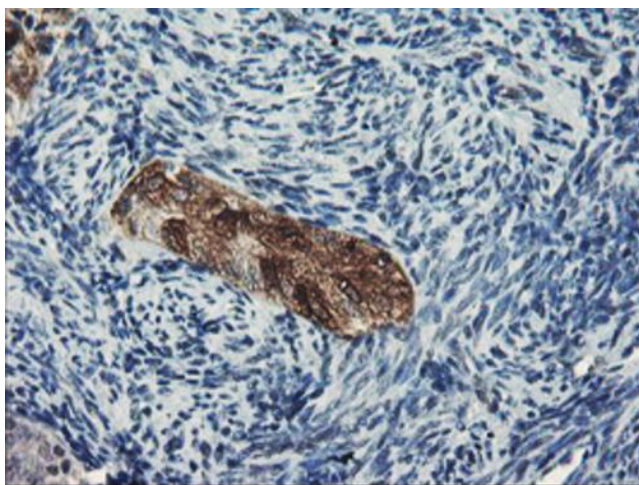


Figure from citation: Western blot analysis of protein levels of DPP4/8/9 in 293E cells transfected with pcDNA3.1 (Mock), pcDNA3.1-hDPP8 (DPP8) and pcDNA3.1-hDPP9 (DPP9), the purified recombinant human DPP4 protein (rhDPP4) was used as a positive control for the DPP4 antibody, antibodies targeting human DPP4/8/9 ([TA500733]/[TA504366]/[TA504040]) and β -actin ([TA310155]) were purchased from OriGene. [View Citation](#)



Immunohistochemical staining of paraffin-embedded Adenocarcinoma of Human endometrium tissue using anti-DPP8 mouse monoclonal antibody. Heat-induced epitope retrieval by EDTA solution buffer pH 8.0 at 120°C for 3 min.