

Product datasheet for **CF504358**

ALOX15 Mouse Monoclonal Antibody [Clone ID: OTI7H6]

Product data:

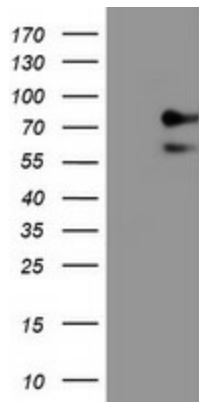
Product Type:	Primary Antibodies
Clone Name:	OTI7H6
Applications:	FC, IF, IHC, WB
Recommended Dilution:	WB 1:2000, IHC 1:150, IF 1:100, FLOW 1:100
Reactivity:	Human
Host:	Mouse
Isotype:	IgG2b
Clonality:	Monoclonal
Immunogen:	Full length human recombinant protein of human ALOX15(NP_001131) produced in HEK293T cell.
Formulation:	Lyophilized powder (original buffer 1X PBS, pH 7.3, 8% trehalose)
Reconstitution Method:	For reconstitution, we recommend adding 100uL distilled water to a final antibody concentration of about 1 mg/mL. To use this carrier-free antibody for conjugation experiment, we strongly recommend performing another round of desalting process. (OriGene recommends Zeba Spin Desalting Columns, 7KMWCO from Thermo Scientific)
Purification:	Purified from mouse ascites fluids or tissue culture supernatant by affinity chromatography (protein A/G)
Conjugation:	Unconjugated
Storage:	Store at -20°C as received.
Stability:	Stable for 12 months from date of receipt.
Predicted Protein Size:	74.6 kDa
Gene Name:	arachidonate 15-lipoxygenase
Database Link:	NP_001131 Entrez Gene 246 Human P16050
Synonyms:	12-LOX; 15-LOX-1; 15LOX-1
Protein Families:	Druggable Genome



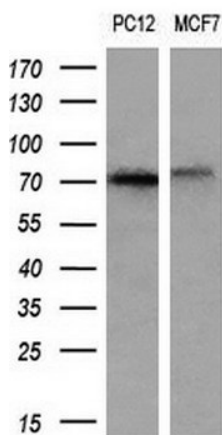
[View online »](#)

Protein Pathways: Arachidonic acid metabolism, Linoleic acid metabolism, Metabolic pathways

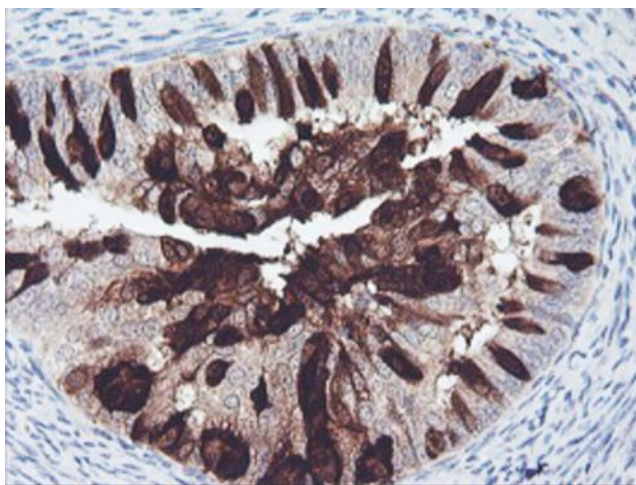
Product images:



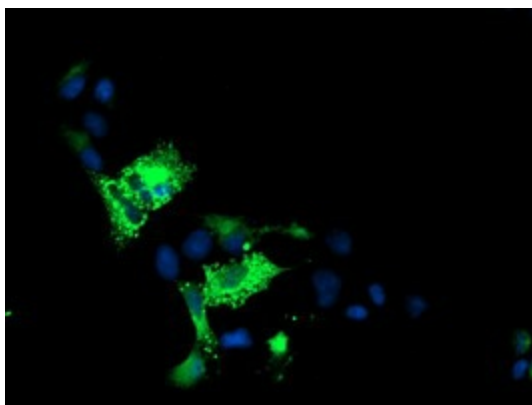
HEK293T cells were transfected with the pCMV6-ENTRY control (Cat# [PS100001], Left lane) or pCMV6-ENTRY ALOX15 (Cat# [RC206621], Right lane) cDNA for 48 hrs and lysed. Equivalent amounts of cell lysates (5 ug per lane) were separated by SDS-PAGE and immunoblotted with anti-ALOX15(Cat# [TA504358]). Positive lysates [LY400456] (100ug) and [LC400456] (20ug) can be purchased separately from OriGene.



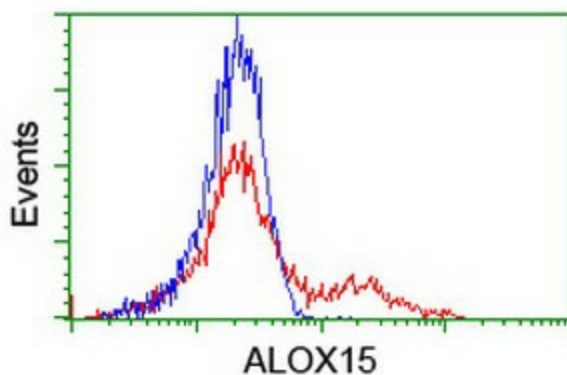
Western blot analysis of extracts (10ug) from 2 different cell lines by using anti-ALOX15 monoclonal antibody (1:200).



Immunohistochemical staining of paraffin-embedded Adenocarcinoma of Human endometrium tissue using anti-ALOX15 mouse monoclonal antibody. Heat-induced epitope retrieval by EDTA solution buffer pH 8.0 at 120°C for 3 min.



Anti-ALOX15 mouse monoclonal antibody ([TA504358]) immunofluorescent staining of COS7 cells transiently transfected by pCMV6-ENTRY ALOX15 ([RC206621]).



HEK293T cells transfected with either [RC206621] overexpress plasmid (Red) or empty vector control plasmid (Blue) were immunostained by anti-ALOX15 antibody ([TA504358]), and then analyzed by flow cytometry.