

Product datasheet for **CF504325**

Dystrobrevin beta (DTNB) Mouse Monoclonal Antibody [Clone ID: OTI2E6]

Product data:

Product Type:	Primary Antibodies
Clone Name:	OTI2E6
Applications:	FC, IHC, WB
Recommended Dilution:	WB 1:1000, IHC 1:150, FLOW 1:100
Reactivity:	Human, Mouse, Rat
Host:	Mouse
Isotype:	IgG1
Clonality:	Monoclonal
Immunogen:	Full length human recombinant protein of human DTNB(NP_899205) produced in HEK293T cell.
Formulation:	Lyophilized powder (original buffer 1X PBS, pH 7.3, 8% trehalose)
Reconstitution Method:	For reconstitution, we recommend adding 100uL distilled water to a final antibody concentration of about 1 mg/mL. To use this carrier-free antibody for conjugation experiment, we strongly recommend performing another round of desalting process. (OriGene recommends Zeba Spin Desalting Columns, 7KMWCO from Thermo Scientific)
Purification:	Purified from mouse ascites fluids or tissue culture supernatant by affinity chromatography (protein A/G)
Conjugation:	Unconjugated
Storage:	Store at -20°C as received.
Stability:	Stable for 12 months from date of receipt.
Predicted Protein Size:	63.6 kDa
Gene Name:	dystrobrevin beta
Database Link:	NP_899205 Entrez Gene 13528 MouseEntrez Gene 362715 RatEntrez Gene 1838 Human O60941



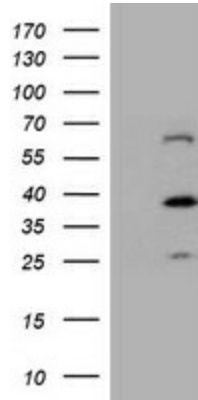
[View online »](#)

Background:

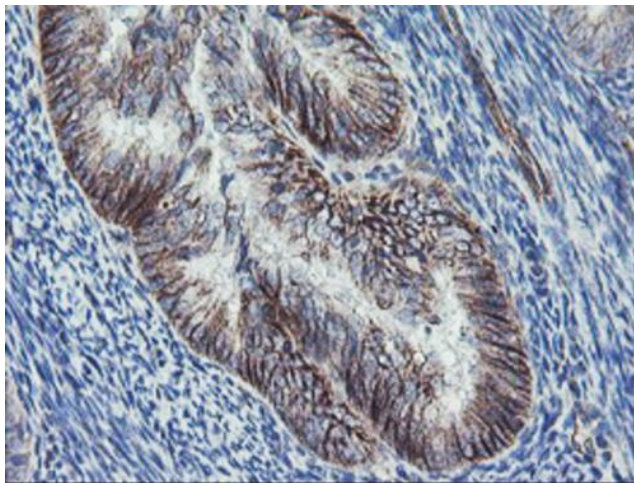
This gene encodes dystrobrevin beta, a component of the dystrophin-associated protein complex (DPC). The DPC consists of dystrophin and several integral and peripheral membrane proteins, including dystroglycans, sarcoglycans, syntrophins and dystrobrevin alpha and beta. The DPC localizes to the sarcolemma and its disruption is associated with various forms of muscular dystrophy. Dystrobrevin beta is thought to interact with syntrophin and the DP71 short form of dystrophin. Alternatively spliced transcript variants encoding different isoforms have been identified. [provided by RefSeq]

Synonyms:

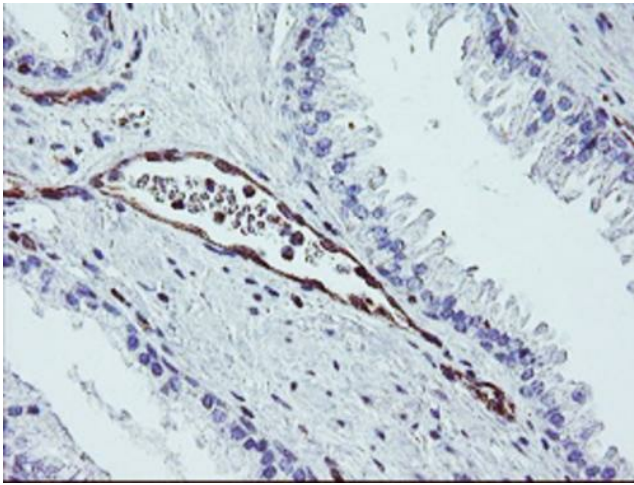
MGC17163; MGC57126

Product images:


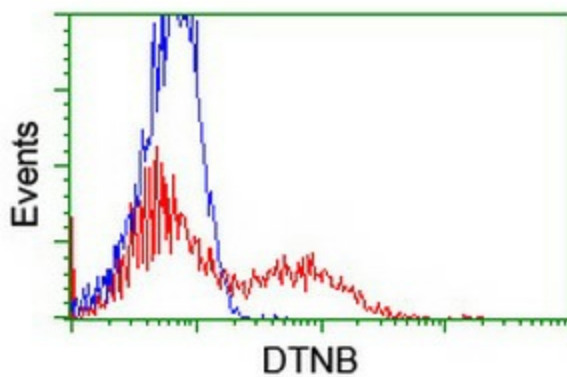
HEK293T cells were transfected with the pCMV6-ENTRY control (Left lane) or pCMV6-ENTRY DTNB ([RC203798], Right lane) cDNA for 48 hrs and lysed. Equivalent amounts of cell lysates (5 ug per lane) were separated by SDS-PAGE and immunoblotted with anti-DTNB. Positive lysates [LY405251] (100ug) and [LC405251] (20ug) can be purchased separately from OriGene.



Immunohistochemical staining of paraffin-embedded Adenocarcinoma of Human endometrium tissue using anti-DTNB mouse monoclonal antibody. (Heat-induced epitope retrieval by 10mM citric buffer, pH6.0, 100°C for 10min, [TA504325])



Immunohistochemical staining of paraffin-embedded Human prostate tissue within the normal limits using anti-DTNB mouse monoclonal antibody. (Heat-induced epitope retrieval by 10mM citric buffer, pH6.0, 100°C for 10min, [TA504325])



HEK293T cells transfected with either [RC203798] overexpress plasmid (Red) or empty vector control plasmid (Blue) were immunostained by anti-DTNB antibody ([TA504325]), and then analyzed by flow cytometry.