

Product datasheet for **CF504303**

PSMD3 Mouse Monoclonal Antibody [Clone ID: OTI2C2]

Product data:

Product Type:	Primary Antibodies
Clone Name:	OTI2C2
Applications:	FC, IF, WB
Recommended Dilution:	WB 1:2000, IF 1:100, FLOW 1:100
Reactivity:	Human, Mouse, Rat
Host:	Mouse
Isotype:	IgG2a
Clonality:	Monoclonal
Immunogen:	Full length human recombinant protein of human PSMD3(NP_002800) produced in HEK293T cell.
Formulation:	Lyophilized powder (original buffer 1X PBS, pH 7.3, 8% trehalose)
Reconstitution Method:	For reconstitution, we recommend adding 100uL distilled water to a final antibody concentration of about 1 mg/mL. To use this carrier-free antibody for conjugation experiment, we strongly recommend performing another round of desalting process. (OriGene recommends Zeba Spin Desalting Columns, 7KMWCO from Thermo Scientific)
Purification:	Purified from mouse ascites fluids or tissue culture supernatant by affinity chromatography (protein A/G)
Conjugation:	Unconjugated
Storage:	Store at -20°C as received.
Stability:	Stable for 12 months from date of receipt.
Predicted Protein Size:	60.8 kDa
Gene Name:	proteasome 26S subunit, non-ATPase 3
Database Link:	NP_002800 Entrez Gene 22123 Mouse Entrez Gene 287670 Rat Entrez Gene 5709 Human O43242



[View online »](#)

Background:

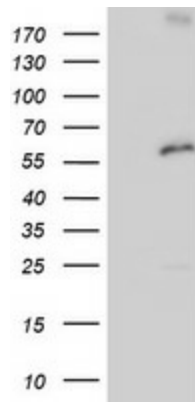
The 26S proteasome is a multicatalytic proteinase complex with a highly ordered structure composed of 2 complexes, a 20S core and a 19S regulator. The 20S core is composed of 4 rings of 28 non-identical subunits; 2 rings are composed of 7 alpha subunits and 2 rings are composed of 7 beta subunits. The 19S regulator is composed of a base, which contains 6 ATPase subunits and 2 non-ATPase subunits, and a lid, which contains up to 10 non-ATPase subunits. Proteasomes are distributed throughout eukaryotic cells at a high concentration and cleave peptides in an ATP/ubiquitin-dependent process in a non-lysosomal pathway. An essential function of a modified proteasome, the immunoproteasome, is the processing of class I MHC peptides. This gene encodes one of the non-ATPase subunits of the 19S regulator lid. [provided by RefSeq, Jul 2008]

Synonyms:

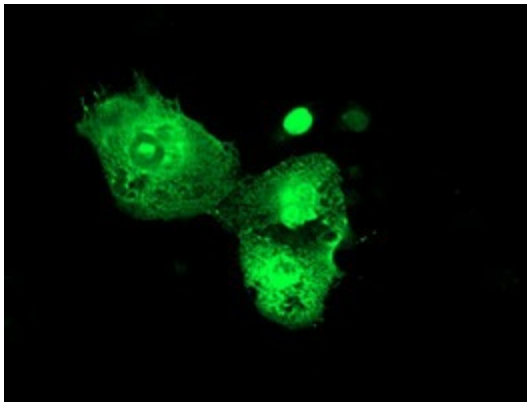
P58; RPN3; S3; TSTA2

Protein Pathways:

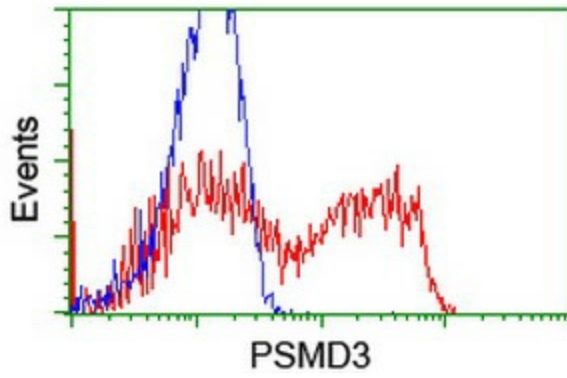
Proteasome

Product images:

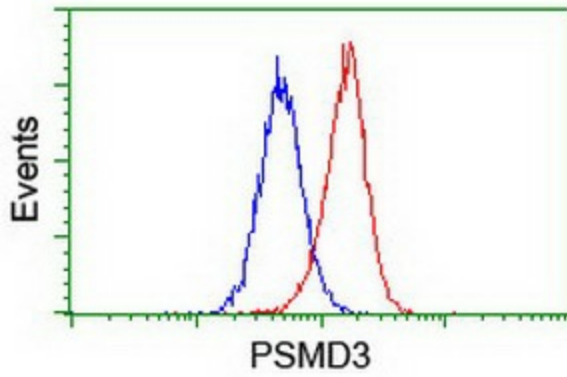
HEK293T cells were transfected with the pCMV6-ENTRY control (Left lane) or pCMV6-ENTRY PSMD3 ([RC202307], Right lane) cDNA for 48 hrs and lysed. Equivalent amounts of cell lysates (5 ug per lane) were separated by SDS-PAGE and immunoblotted with anti-PSMD3. Positive lysates [LY400996] (100ug) and [LC400996] (20ug) can be purchased separately from OriGene.



Anti-PSMD3 mouse monoclonal antibody ([TA504303]) immunofluorescent staining of COS7 cells transiently transfected by pCMV6-ENTRY PSMD3 ([RC202307]).



HEK293T cells transfected with either [RC202307] overexpress plasmid (Red) or empty vector control plasmid (Blue) were immunostained by anti-PSMD3 antibody ([TA504303]), and then analyzed by flow cytometry.



Flow cytometric Analysis of Jurkat cells, using anti-PSMD3 antibody ([TA504303]), (Red), compared to a nonspecific negative control antibody, (Blue).