

Product datasheet for **CF504244**

EXOSC7 Mouse Monoclonal Antibody [Clone ID: OTI1F4]

Product data:

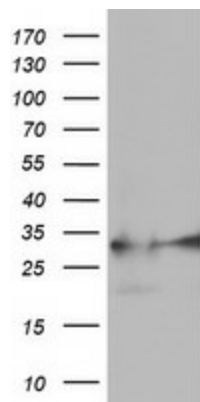
Product Type:	Primary Antibodies
Clone Name:	OTI1F4
Applications:	FC, IHC, WB
Recommended Dilution:	WB 1:2000, IHC 1:150, FLOW 1:100
Reactivity:	Human, Mouse, Rat
Host:	Mouse
Isotype:	IgG1
Clonality:	Monoclonal
Immunogen:	Full length human recombinant protein of human EXOSC7(NP_055819) produced in HEK293T cell.
Formulation:	Lyophilized powder (original buffer 1X PBS, pH 7.3, 8% trehalose)
Reconstitution Method:	For reconstitution, we recommend adding 100uL distilled water to a final antibody concentration of about 1 mg/mL. To use this carrier-free antibody for conjugation experiment, we strongly recommend performing another round of desalting process. (OriGene recommends Zeba Spin Desalting Columns, 7KMWCO from Thermo Scientific)
Purification:	Purified from mouse ascites fluids or tissue culture supernatant by affinity chromatography (protein A/G)
Conjugation:	Unconjugated
Storage:	Store at -20°C as received.
Stability:	Stable for 12 months from date of receipt.
Predicted Protein Size:	31.6 kDa
Gene Name:	exosome component 7
Database Link:	NP_055819 Entrez Gene 66446 Mouse Entrez Gene 316098 Rat Entrez Gene 23016 Human Q15024
Synonyms:	EAP1; hRrp42p; p8; RRP42; Rrp42p
Protein Families:	Stem cell - Pluripotency



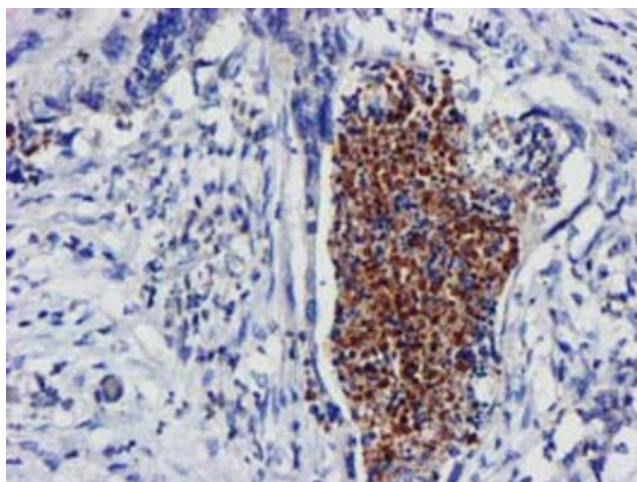
[View online »](#)

Protein Pathways: RNA degradation

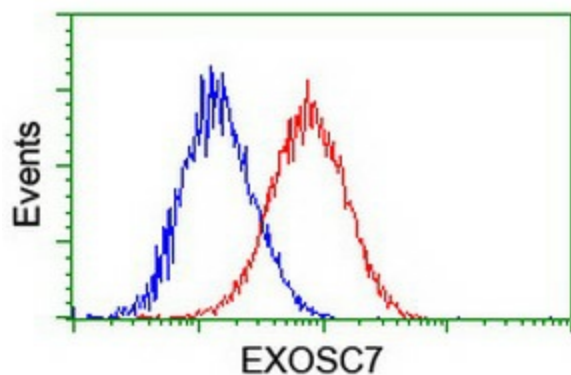
Product images:



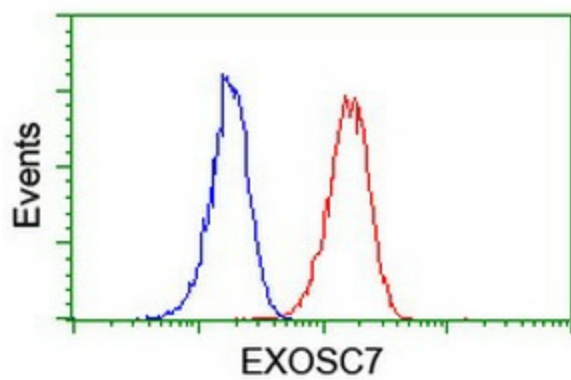
HEK293T cells were transfected with the pCMV6-ENTRY control (Left lane) or pCMV6-ENTRY EXOSC7 ([RC201419], Right lane) cDNA for 48 hrs and lysed. Equivalent amounts of cell lysates (5 ug per lane) were separated by SDS-PAGE and immunoblotted with anti-EXOSC7. Positive lysates [LY402399] (100ug) and [LC402399] (20ug) can be purchased separately from OriGene.



Immunohistochemical staining of paraffin-embedded Carcinoma of Human pancreas tissue using anti-EXOSC7 mouse monoclonal antibody. Heat-induced epitope retrieval by EDTA solution buffer pH 8.0 at 120°C for 3 min.



Flow cytometric Analysis of HeLa cells, using anti-EXOSC7 antibody ([TA504244]), (Red), compared to a nonspecific negative control antibody, (Blue).



Flow cytometric Analysis of Jurkat cells, using anti-EXOSC7 antibody ([TA504244]), (Red), compared to a nonspecific negative control antibody, (Blue).