

## Product datasheet for **CF504144**

### AGPAT5 Mouse Monoclonal Antibody [Clone ID: OTI2C4]

#### Product data:

Product Type:	Primary Antibodies
Clone Name:	OTI2C4
Applications:	IF, IHC, WB
Recommended Dilution:	WB 1:2000, IHC 1:150, IF 1:100
Reactivity:	Human
Host:	Mouse
Isotype:	IgG2a
Clonality:	Monoclonal
Immunogen:	Full length human recombinant protein of human AGPAT5(NP_060831) produced in HEK293T cell.
Formulation:	Lyophilized powder (original buffer 1X PBS, pH 7.3, 8% trehalose)
Reconstitution Method:	For reconstitution, we recommend adding 100uL distilled water to a final antibody concentration of about 1 mg/mL. To use this carrier-free antibody for conjugation experiment, we strongly recommend performing another round of desalting process. (OriGene recommends Zeba Spin Desalting Columns, 7KMWCO from Thermo Scientific)
Purification:	Purified from mouse ascites fluids or tissue culture supernatant by affinity chromatography (protein A/G)
Conjugation:	Unconjugated
Storage:	Store at -20°C as received.
Stability:	Stable for 12 months from date of receipt.
Predicted Protein Size:	41.9 kDa
Gene Name:	1-acylglycerol-3-phosphate O-acyltransferase 5
Database Link:	<a href="#">NP_060831</a> <a href="#">Entrez Gene 55326 Human</a> <a href="#">Q9NUQ2</a>



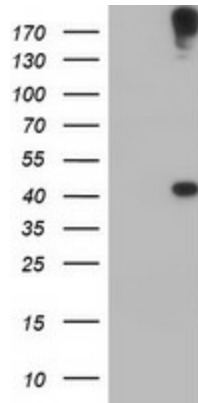
[View online »](#)

**Background:** This gene encodes a member of the 1-acylglycerol-3-phosphate O-acyltransferase family. This integral membrane protein converts lysophosphatidic acid to phosphatidic acid, the second step in de novo phospholipid biosynthesis. [provided by RefSeq]. COMPLETENESS: complete on the 3' end.

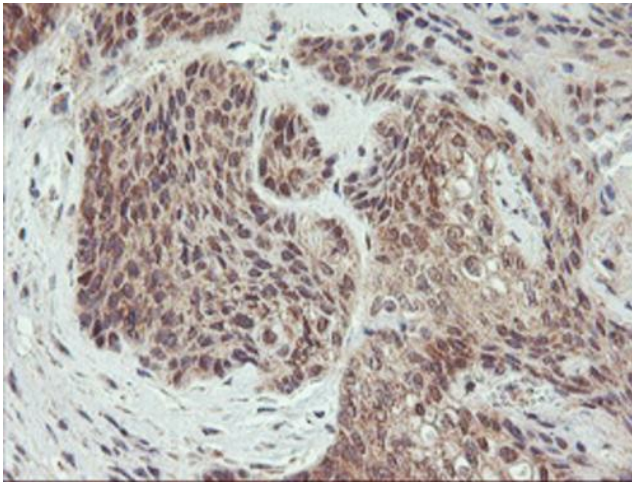
**Synonyms:** 1AGPAT5; LPAATE

**Protein Families:** Transmembrane

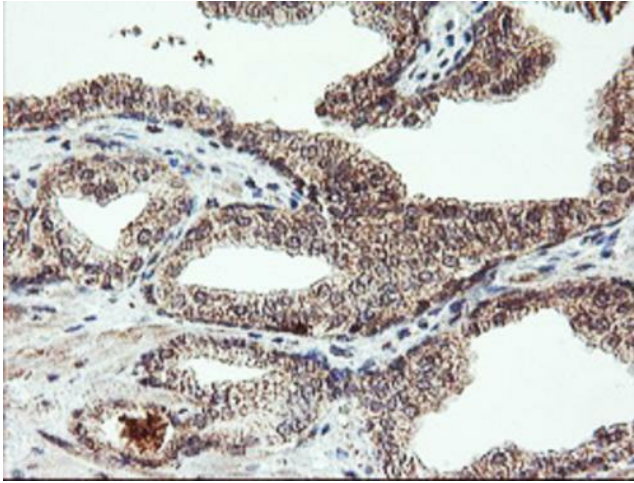
**Product images:**



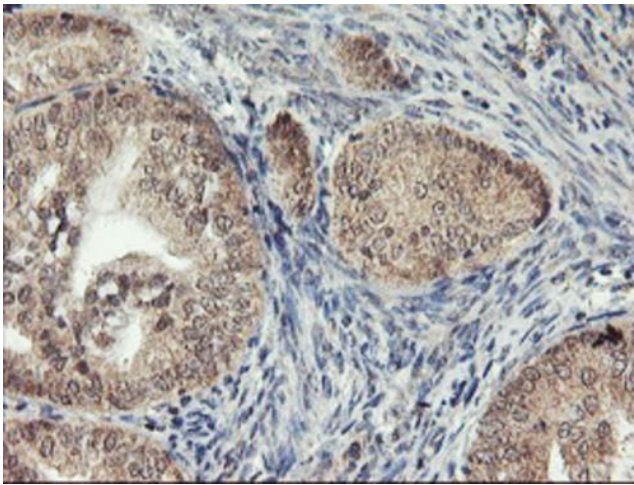
HEK293T cells were transfected with the pCMV6-ENTRY control (Left lane) or pCMV6-ENTRY AGPAT5 ([RC210280], Right lane) cDNA for 48 hrs and lysed. Equivalent amounts of cell lysates (5 ug per lane) were separated by SDS-PAGE and immunoblotted with anti-AGPAT5. Positive lysates [LY413113] (100ug) and [LC413113] (20ug) can be purchased separately from OriGene.



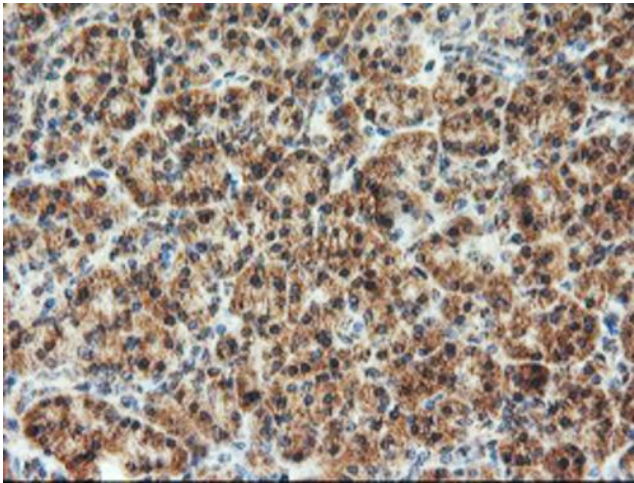
Immunohistochemical staining of paraffin-embedded Carcinoma of Human bladder tissue using anti-AGPAT5 mouse monoclonal antibody. (Heat-induced epitope retrieval by 10mM citric buffer, pH6.0, 100°C for 10min, [TA504144])



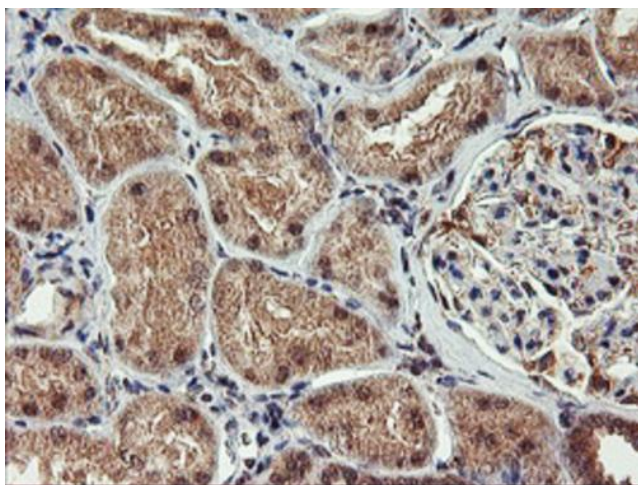
Immunohistochemical staining of paraffin-embedded Carcinoma of Human prostate tissue using anti-AGPAT5 mouse monoclonal antibody. (Heat-induced epitope retrieval by 10mM citric buffer, pH6.0, 100°C for 10min, [TA504144])



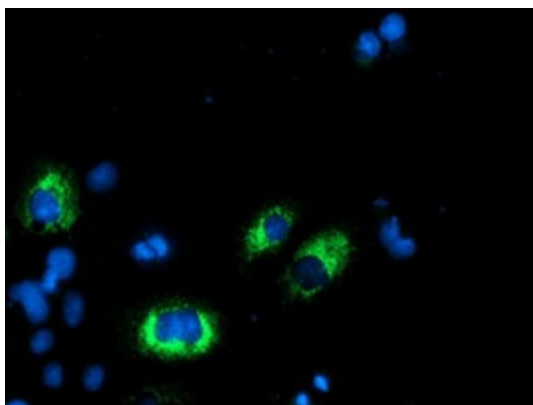
Immunohistochemical staining of paraffin-embedded Adenocarcinoma of Human endometrium tissue using anti-AGPAT5 mouse monoclonal antibody. (Heat-induced epitope retrieval by 10mM citric buffer, pH6.0, 100°C for 10min, [TA504144])



Immunohistochemical staining of paraffin-embedded Human pancreas tissue within the normal limits using anti-AGPAT5 mouse monoclonal antibody. (Heat-induced epitope retrieval by 10mM citric buffer, pH6.0, 100°C for 10min, [TA504144])



Immunohistochemical staining of paraffin-embedded Human Kidney tissue within the normal limits using anti-AGPAT5 mouse monoclonal antibody. (Heat-induced epitope retrieval by 10mM citric buffer, pH6.0, 100°C for 10min, [TA504144])



Anti-AGPAT5 mouse monoclonal antibody ([TA504144]) immunofluorescent staining of COS7 cells transiently transfected by pCMV6-ENTRY AGPAT5 ([RC210280]).