

Product datasheet for **CF504110**

PFD6 (PFDN6) Mouse Monoclonal Antibody [Clone ID: OTI4E10]

Product data:

Product Type:	Primary Antibodies
Clone Name:	OTI4E10
Applications:	FC, IHC, WB
Recommended Dilution:	WB 1:2000, IHC 1:150, FLOW 1:100
Reactivity:	Human, Mouse, Rat
Host:	Mouse
Isotype:	IgG1
Clonality:	Monoclonal
Immunogen:	Human recombinant protein fragment corresponding to amino acids 2-129 of human PFDN6(NP_055075) produced in E.coli.
Formulation:	Lyophilized powder (original buffer 1X PBS, pH 7.3, 8% trehalose)
Reconstitution Method:	For reconstitution, we recommend adding 100uL distilled water to a final antibody concentration of about 1 mg/mL. To use this carrier-free antibody for conjugation experiment, we strongly recommend performing another round of desalting process. (OriGene recommends Zeba Spin Desalting Columns, 7KMWCO from Thermo Scientific)
Purification:	Purified from mouse ascites fluids or tissue culture supernatant by affinity chromatography (protein A/G)
Conjugation:	Unconjugated
Storage:	Store at -20°C as received.
Stability:	Stable for 12 months from date of receipt.
Predicted Protein Size:	14.4 kDa
Gene Name:	prefoldin subunit 6
Database Link:	NP_055075 Entrez Gene 14976 Mouse Entrez Gene 309629 Rat Entrez Gene 10471 Human O15212



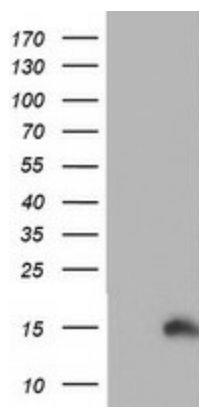
[View online »](#)

Background: PFDN6 is a subunit of the heteromeric prefoldin complex that chaperones nascent actin (see MIM 102560) and alpha- and beta-tubulin (see MIM 602529 and MIM 191130, respectively) chains pending their transfer to the cytosolic chaperonin containing TCP1 (MIM 186980) (CCT) complex (Hansen et al., 1999 [PubMed 10209023]). [supplied by OMIM]

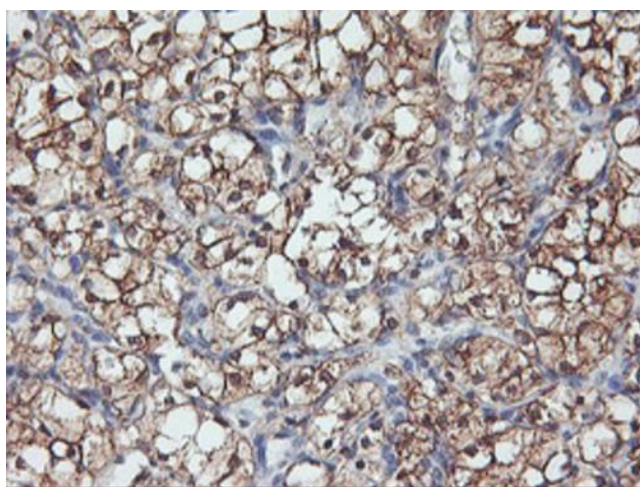
Synonyms: H2-KE2; HKE2; KE-2; PFD6

Protein Families: Stem cell - Pluripotency

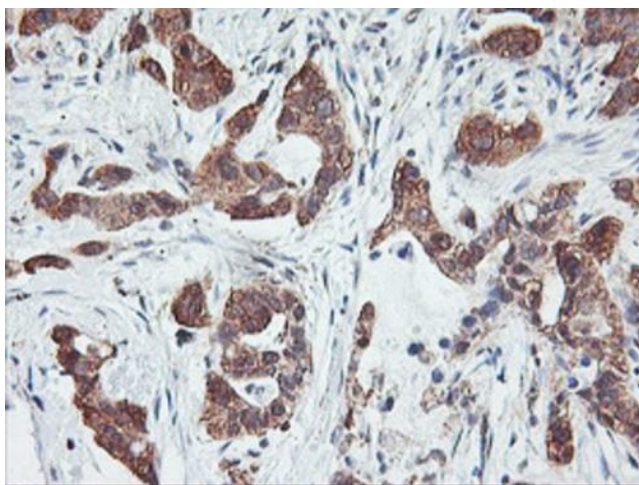
Product images:



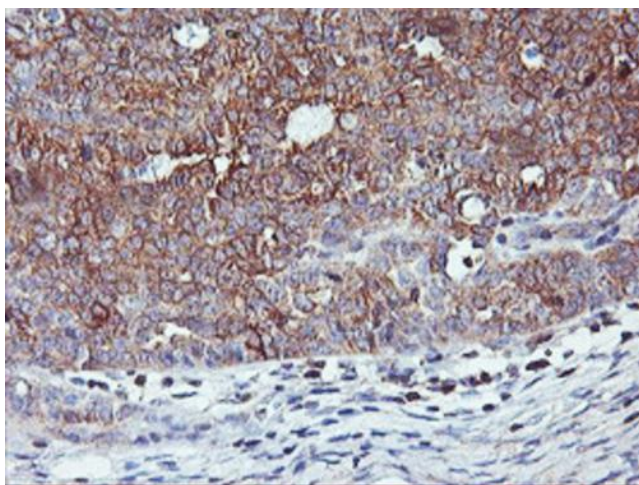
HEK293T cells were transfected with the pCMV6-ENTRY control (Cat# [PS100001], Left lane) or pCMV6-ENTRY PFDN6 (Cat# [RC207901], Right lane) cDNA for 48 hrs and lysed. Equivalent amounts of cell lysates (5 ug per lane) were separated by SDS-PAGE and immunoblotted with anti-PFDN6 (Cat# [TA504110]). Positive lysates [LY415391] (100ug) and [LC415391] (20ug) can be purchased separately from OriGene.



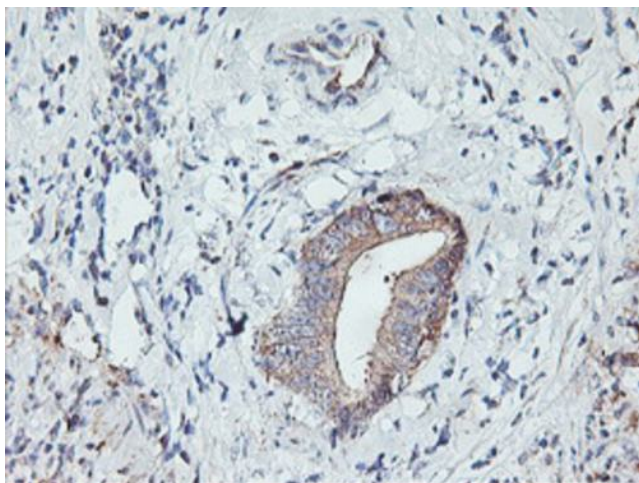
Immunohistochemical staining of paraffin-embedded Carcinoma of Human kidney tissue using anti-PFDN6 mouse monoclonal antibody. (Heat-induced epitope retrieval by 10mM citric buffer, pH6.0, 100°C for 10min, [TA504110])



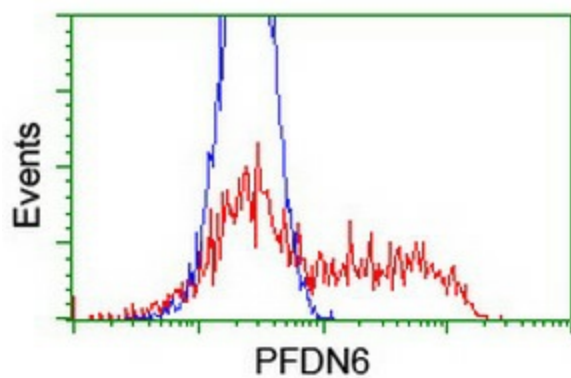
Immunohistochemical staining of paraffin-embedded Carcinoma of Human lung tissue using anti-PFDN6 mouse monoclonal antibody. (Heat-induced epitope retrieval by 10mM citric buffer, pH6.0, 100°C for 10min, [TA504110])



Immunohistochemical staining of paraffin-embedded Adenocarcinoma of Human ovary tissue using anti-PFDN6 mouse monoclonal antibody. (Heat-induced epitope retrieval by 10mM citric buffer, pH6.0, 100°C for 10min, [TA504110])



Immunohistochemical staining of paraffin-embedded Carcinoma of Human pancreas tissue using anti-PFDN6 mouse monoclonal antibody. (Heat-induced epitope retrieval by 10mM citric buffer, pH6.0, 100°C for 10min, [TA504110])



HEK293T cells transfected with either [RC207901] overexpress plasmid (Red) or empty vector control plasmid (Blue) were immunostained by anti-PFDN6 antibody ([TA504110]), and then analyzed by flow cytometry.