

## Product datasheet for **CF504091**

### LECT2 Mouse Monoclonal Antibody [Clone ID: OTI2A11]

#### Product data:

Product Type:	Primary Antibodies
Clone Name:	OTI2A11
Applications:	IHC, WB
Recommended Dilution:	WB 1:500, IHC 1:150
Reactivity:	Human
Host:	Mouse
Isotype:	IgG1
Clonality:	Monoclonal
Immunogen:	Human recombinant protein fragment corresponding to amino acids 19-151 of human LECT2(NP_002293) produced in E.coli.
Formulation:	Lyophilized powder (original buffer 1X PBS, pH 7.3, 8% trehalose)
Reconstitution Method:	For reconstitution, we recommend adding 100uL distilled water to a final antibody concentration of about 1 mg/mL. To use this carrier-free antibody for conjugation experiment, we strongly recommend performing another round of desalting process. (OriGene recommends Zeba Spin Desalting Columns, 7KMWCO from Thermo Scientific)
Purification:	Purified from mouse ascites fluids or tissue culture supernatant by affinity chromatography (protein A/G)
Conjugation:	Unconjugated
Storage:	Store at -20°C as received.
Stability:	Stable for 12 months from date of receipt.
Predicted Protein Size:	14.5 kDa
Gene Name:	leukocyte cell derived chemotaxin 2
Database Link:	<a href="#">NP_002293</a> <a href="#">Entrez Gene 3950 Human</a> <a href="#">O14960</a>



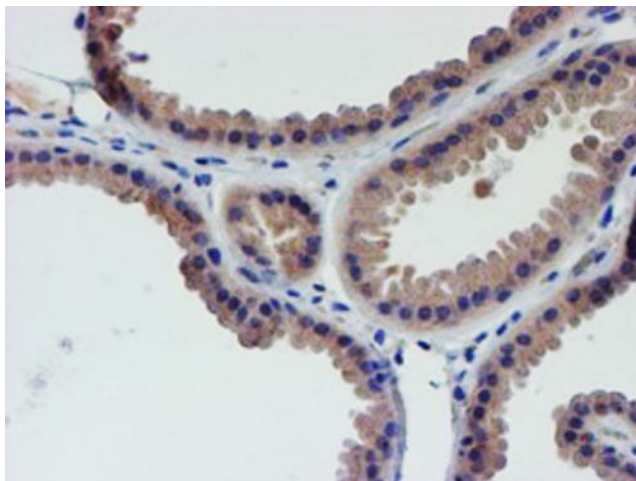
[View online »](#)

**Background:** This gene encodes a secreted, 16 kDa protein that acts as a chemotactic factor to neutrophils and stimulates the growth of chondrocytes and osteoblasts. This protein has high sequence similarity to the chondromodulin repeat regions of the chicken myb-induced myeloid 1 protein. A polymorphism in this gene may be associated with rheumatoid arthritis. [provided by RefSeq]

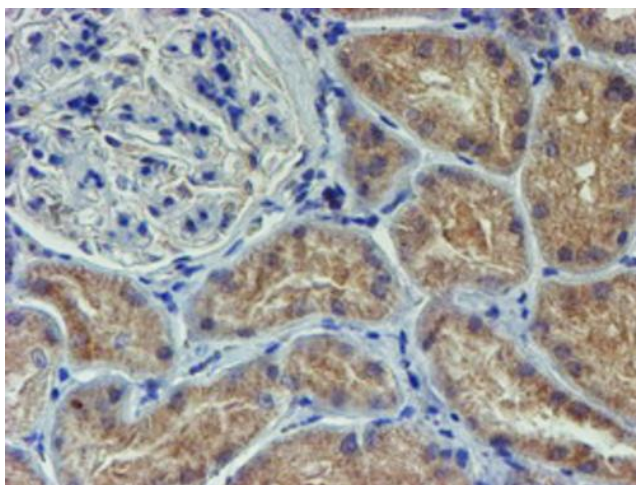
**Synonyms:** chm-II; chm2

**Protein Families:** Druggable Genome, Secreted Protein

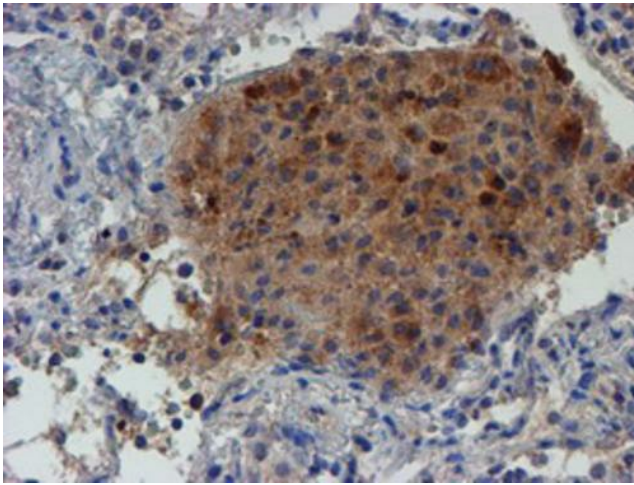
**Product images:**



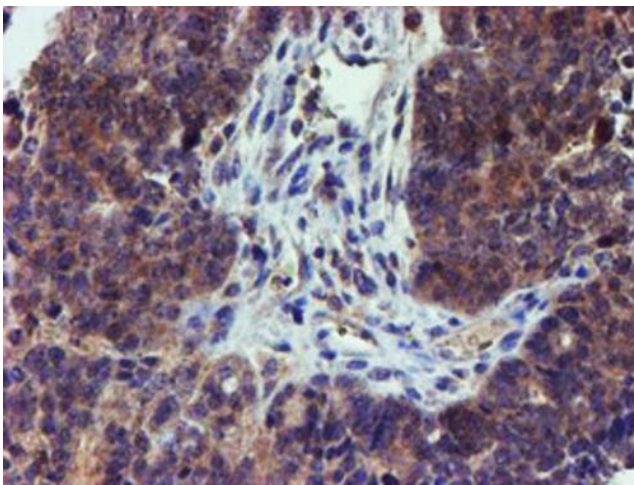
Immunohistochemical staining of paraffin-embedded Human breast tissue within the normal limits using anti-LECT2 mouse monoclonal antibody. (Heat-induced epitope retrieval by 10mM citric buffer, pH6.0, 100°C for 10min, [TA504091])



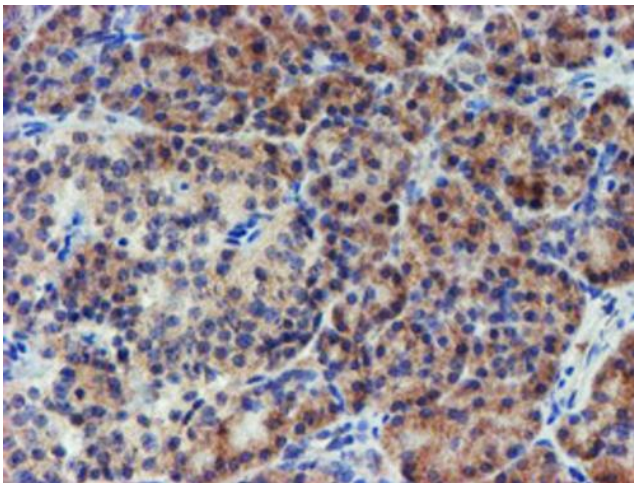
Immunohistochemical staining of paraffin-embedded Human Kidney tissue within the normal limits using anti-LECT2 mouse monoclonal antibody. (Heat-induced epitope retrieval by 10mM citric buffer, pH6.0, 100°C for 10min, [TA504091])



Immunohistochemical staining of paraffin-embedded Carcinoma of Human lung tissue using anti-LECT2 mouse monoclonal antibody. (Heat-induced epitope retrieval by 10mM citric buffer, pH6.0, 100°C for 10min, [TA504091])

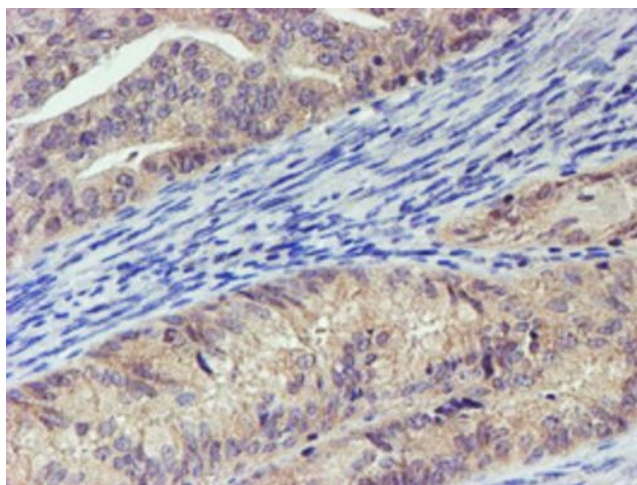


Immunohistochemical staining of paraffin-embedded Adenocarcinoma of Human ovary tissue using anti-LECT2 mouse monoclonal antibody. (Heat-induced epitope retrieval by 10mM citric buffer, pH6.0, 100°C for 10min, [TA504091])

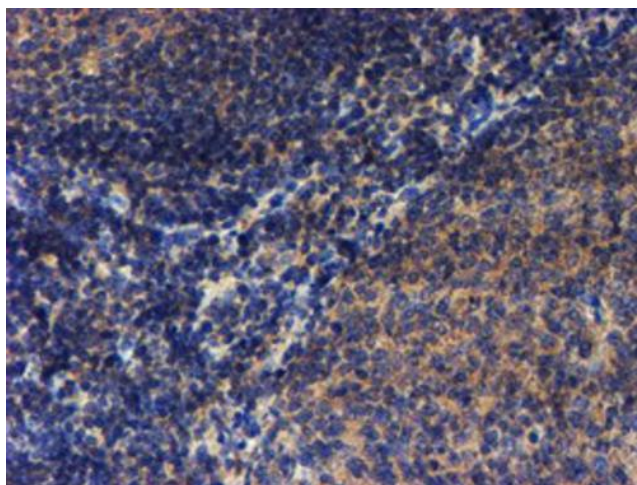


Immunohistochemical staining of paraffin-embedded Human pancreas tissue within the normal limits using anti-LECT2 mouse monoclonal antibody. (Heat-induced epitope retrieval by 10mM citric buffer, pH6.0, 100°C for 10min, [TA504091])





Immunohistochemical staining of paraffin-embedded Adenocarcinoma of Human endometrium tissue using anti-LECT2 mouse monoclonal antibody. (Heat-induced epitope retrieval by 10mM citric buffer, pH6.0, 100°C for 10min, [TA504091])



Immunohistochemical staining of paraffin-embedded Human tonsil within the normal limits using anti-LECT2 mouse monoclonal antibody. (Heat-induced epitope retrieval by 10mM citric buffer, pH6.0, 100°C for 10min, [TA504091])