

Product datasheet for **CF504082**

C1S Mouse Monoclonal Antibody [Clone ID: OTI4E3]

Product data:

Product Type:	Primary Antibodies
Clone Name:	OTI4E3
Applications:	FC, IF, IHC, WB
Recommended Dilution:	WB 1:2000, IHC 1:150, IF 1:100, FLOW 1:100
Reactivity:	Human
Host:	Mouse
Isotype:	IgG2a
Clonality:	Monoclonal
Immunogen:	Full length human recombinant protein of human C1S(NP_001725) produced in HEK293T cell.
Formulation:	Lyophilized powder (original buffer 1X PBS, pH 7.3, 8% trehalose)
Reconstitution Method:	For reconstitution, we recommend adding 100uL distilled water to a final antibody concentration of about 1 mg/mL. To use this carrier-free antibody for conjugation experiment, we strongly recommend performing another round of desalting process. (OriGene recommends Zeba Spin Desalting Columns, 7KMWCO from Thermo Scientific)
Purification:	Purified from mouse ascites fluids or tissue culture supernatant by affinity chromatography (protein A/G)
Conjugation:	Unconjugated
Storage:	Store at -20°C as received.
Stability:	Stable for 12 months from date of receipt.
Predicted Protein Size:	74.8 kDa
Gene Name:	Homo sapiens complement C1s (C1S), transcript variant 2, mRNA.
Database Link:	NP_001725 Entrez Gene 716 Human P09871
Background:	This gene encodes a serine protease, which is a major constituent of the human complement subcomponent C1. C1s associates with two other complement components C1r and C1q in order to yield the first component of the serum complement system. Defects in this gene are the cause of selective C1s deficiency. [provided by RefSeq]



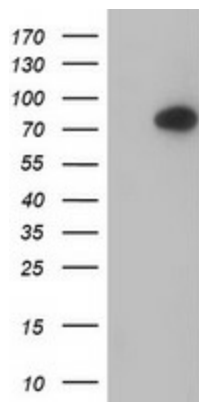
[View online »](#)

Synonyms: FLJ44757

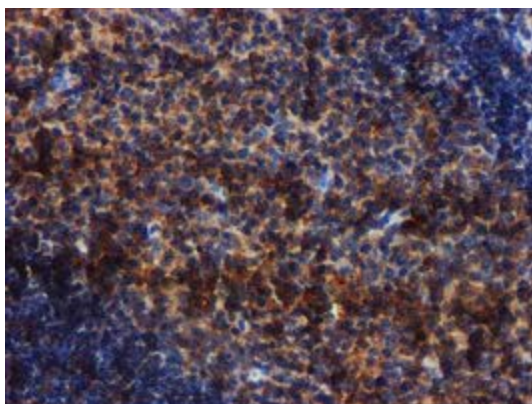
Protein Families: Druggable Genome, Protease

Protein Pathways: Complement and coagulation cascades, Systemic lupus erythematosus

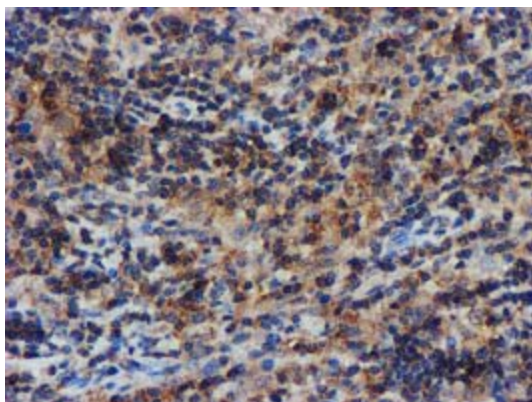
Product images:



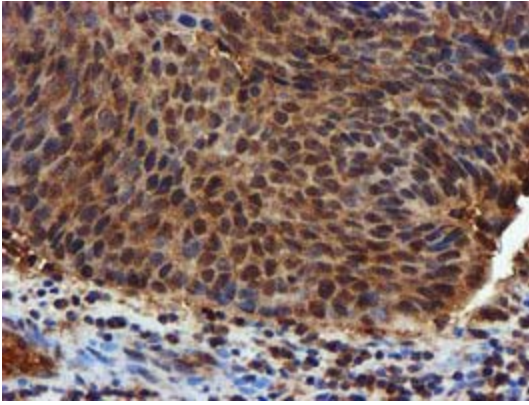
HEK293T cells were transfected with the pCMV6-ENTRY control (Left lane) or pCMV6-ENTRY C1S ([RC218963], Right lane) cDNA for 48 hrs and lysed. Equivalent amounts of cell lysates (5 ug per lane) were separated by SDS-PAGE and immunoblotted with anti-C1S. Positive lysates [LY400655] (100ug) and [LC400655] (20ug) can be purchased separately from OriGene.



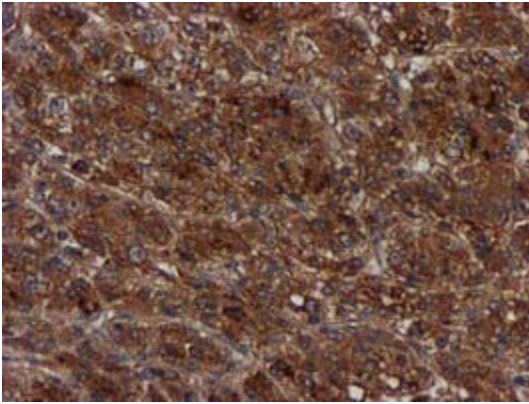
Immunohistochemical staining of paraffin-embedded Human tonsil within the normal limits using anti-C1S mouse monoclonal antibody. (Heat-induced epitope retrieval by 10mM citric buffer, pH6.0, 100°C for 10min, [TA504082])



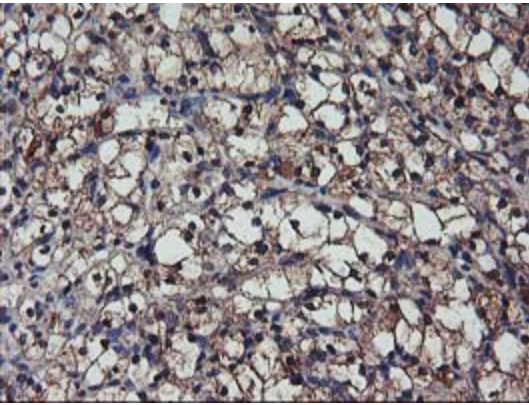
Immunohistochemical staining of paraffin-embedded Human lymphoma tissue using anti-C1S mouse monoclonal antibody. (Heat-induced epitope retrieval by 10mM citric buffer, pH6.0, 100°C for 10min, [TA504082])



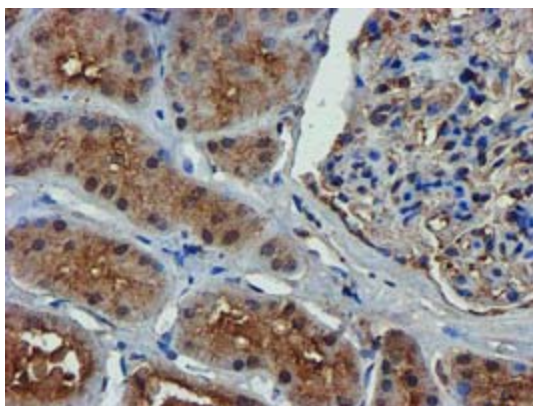
Immunohistochemical staining of paraffin-embedded Carcinoma of Human bladder tissue using anti-C1S mouse monoclonal antibody. (Heat-induced epitope retrieval by 10mM citric buffer, pH6.0, 100°C for 10min, [TA504082])



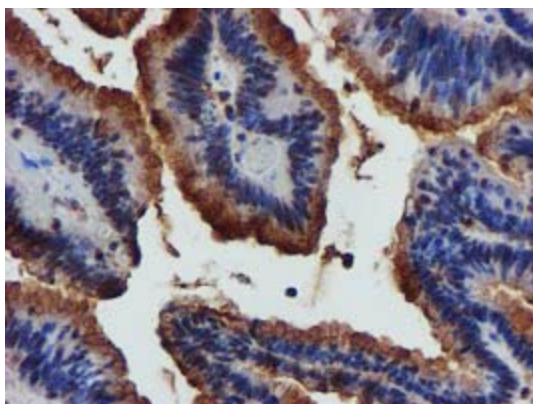
Immunohistochemical staining of paraffin-embedded Carcinoma of Human liver tissue using anti-C1S mouse monoclonal antibody. (Heat-induced epitope retrieval by 10mM citric buffer, pH6.0, 100°C for 10min, [TA504082])



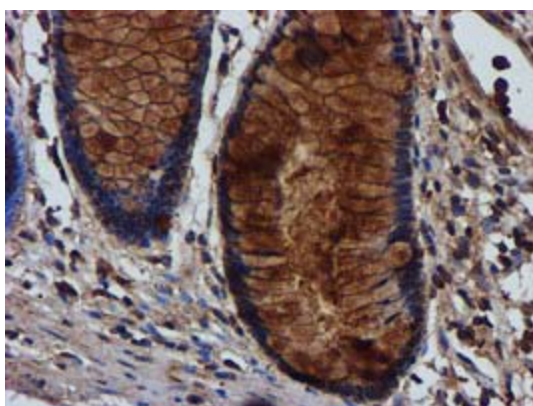
Immunohistochemical staining of paraffin-embedded Carcinoma of Human kidney tissue using anti-C1S mouse monoclonal antibody. (Heat-induced epitope retrieval by 10mM citric buffer, pH6.0, 100°C for 10min, [TA504082])



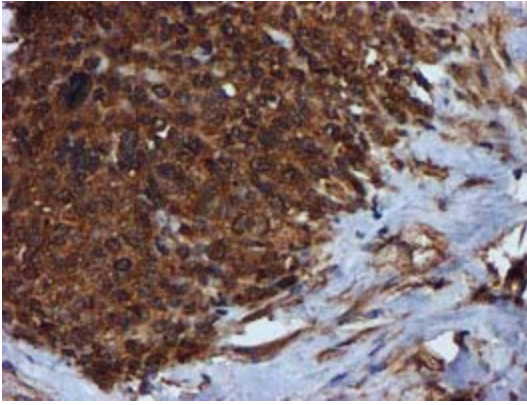
Immunohistochemical staining of paraffin-embedded Human Kidney tissue within the normal limits using anti-C1S mouse monoclonal antibody. (Heat-induced epitope retrieval by 10mM citric buffer, pH6.0, 100°C for 10min, [TA504082])



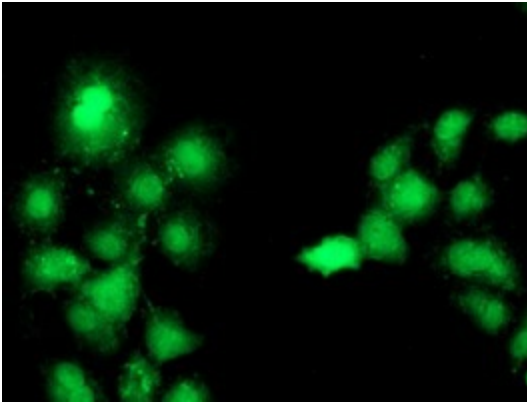
Immunohistochemical staining of paraffin-embedded Adenocarcinoma of Human colon tissue using anti-C1S mouse monoclonal antibody. (Heat-induced epitope retrieval by 10mM citric buffer, pH6.0, 100°C for 10min, [TA504082])



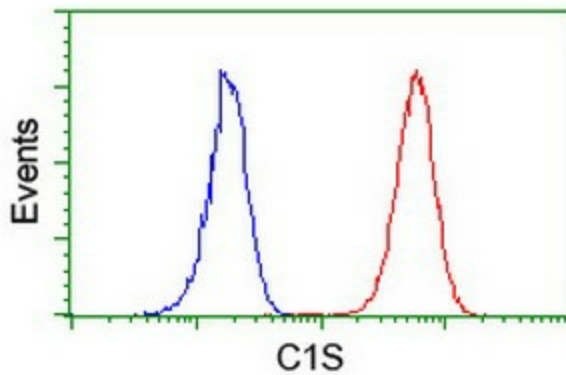
Immunohistochemical staining of paraffin-embedded Human colon tissue within the normal limits using anti-C1S mouse monoclonal antibody. (Heat-induced epitope retrieval by 10mM citric buffer, pH6.0, 100°C for 10min, [TA504082])



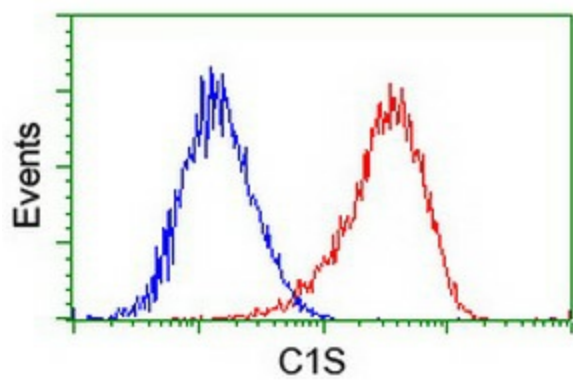
Immunohistochemical staining of paraffin-embedded Adenocarcinoma of Human breast tissue using anti-C1S mouse monoclonal antibody. (Heat-induced epitope retrieval by 10mM citric buffer, pH6.0, 100°C for 10min, [TA504082])



Anti-C1S mouse monoclonal antibody ([TA504082]) immunofluorescent staining of COS7 cells transiently transfected by pCMV6-ENTRY C1S ([RC218963]).



Flow cytometric Analysis of Jurkat cells, using anti-C1S antibody ([TA504082]), (Red), compared to a nonspecific negative control antibody, (Blue).



Flow cytometric Analysis of HeLa cells, using anti-C1S antibody (TA504082), (Red), compared to a nonspecific negative control antibody, (Blue).